

950-123 100W 5000K 95 specific configuration  
UFO high bay | 100/120/150W | 150 Lm/W | 3-CCT | 75/95/105°

## Introduction

### Purpose of this Document

This document provides information for 950-123 100W 5000K 95. During measurement, the product is used in a different mode where output power, colour temperature and/or beam angle are changed from factory standard. These adjustments can be made without altering the product and are designed to be set by the installer. In most cases, the options are set through switches on the product.

### Results

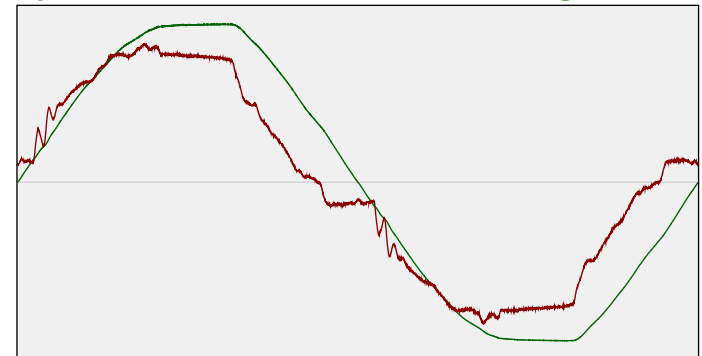
Total input power	91.4 W
Correlated Colour Temperature	5294 K
Total lumen output	13289 lm
Efficiency	145 lm/W

## Electrical measurement details

### Input Power

RMS Input voltage feed. $V_{RMS}$	230 V
RMS Input current feed. $I_{RMS}$	0.420 A
Total input power	91.4 W
Frequency of input power	50 Hz
Power factor	0.94
Displacement power factor	0.95
Total harmonic distortion of the current	13.13%
Total harmonic distortion of the voltage	2.72%

### Input Power Curve



### Efficiency

Radiated power efficiency: 46.3%



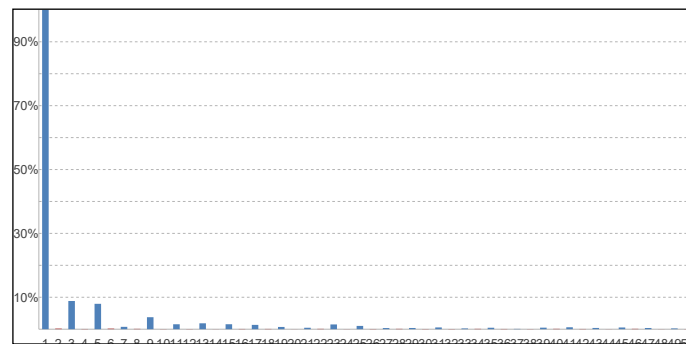
Lumen efficiency: 145 lm/W



### Harmonics

3rd Harmonic	8.83%
5th Harmonic	7.95%
7th Harmonic	0.74%
9th Harmonic	3.75%
11th Harmonic	1.55%

### Current Harmonics %



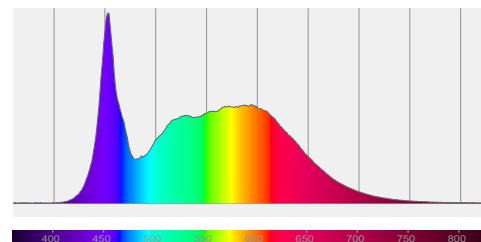
## 950-123 100W 5000K 95 specific configuration

### Colour measurement details

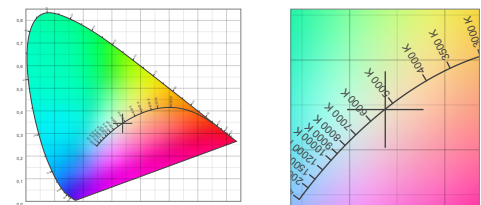
Total lumen output 13289 lm  
 Correlated Colour Temperature 5294 K  
 Colour coordinates CIE 1931 (x;y) = (0.337;0.345)  
 Colour deviation from BBL Duv = -0.0003

TM30-18 Colour Fidelity Index  $R_f$  85.1  
 TM30-18 Colour Gamut Index  $R_g$  96.2  
 Colour Rendering Index (Ra) CRI 86.3  
 Colour Rendering Index. (red component)  $R_9 = 21.8$

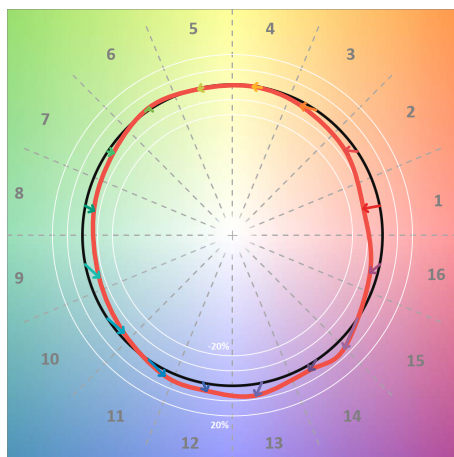
Colour Quality Scale CQS = 82.8  
 Television Lighting Consistency Index TLCI = 79



Relative spectral power distribution



### TM30 details

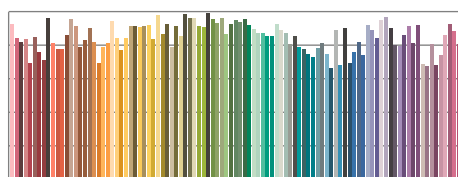


TM30 Colour vectors per hue bin

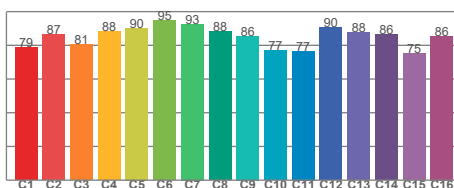


TM30 Colour distortion

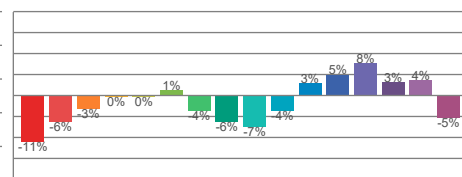
Hue Bin	$R_f$	Shifts (%)	
		Chroma	Hue
C1	79	-11%	0%
C2	87	-6%	5%
C3	81	-3%	10%
C4	88	0%	6%
C5	90	0%	3%
C6	95	1%	-1%
C7	93	-4%	-1%
C8	88	-6%	2%
C9	86	-7%	10%
C10	77	-4%	14%
C11	77	3%	14%
C12	90	5%	3%
C13	88	8%	-5%
C14	86	3%	-7%
C15	75	4%	-21%
C16	86	-5%	-7%



TM30-18  $R_f$ -values per reference colour

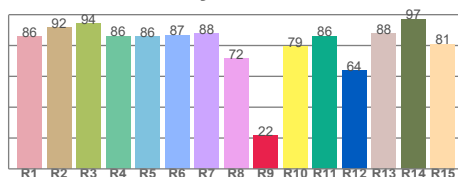


TM30-18  $R_f$ -values per hue bin

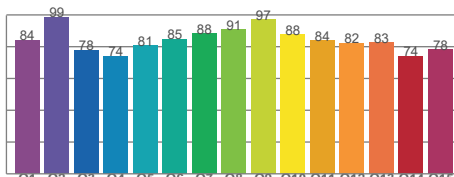


TM30 Chroma shift

### Colour Quality details



Colour Rendering Index



Colour Quality Scale