

950-123 100W 4000K 95 specific configuration
UFO high bay | 100/120/150W | 150 Lm/W | 3-CCT | 75/95/105°

Introduction

Purpose of this Document

This document provides information for 950-123 100W 4000K 95. During measurement, the product is used in a different mode where output power, colour temperature and/or beam angle are changed from factory standard. These adjustments can be made without altering the product and are designed to be set by the installer. In most cases, the options are set through switches on the product.

Results

Total input power	89.3 W
Correlated Colour Temperature	4015 K
Total lumen output	13092 lm
Efficiency	147 lm/W

Electrical measurement details

Input Power

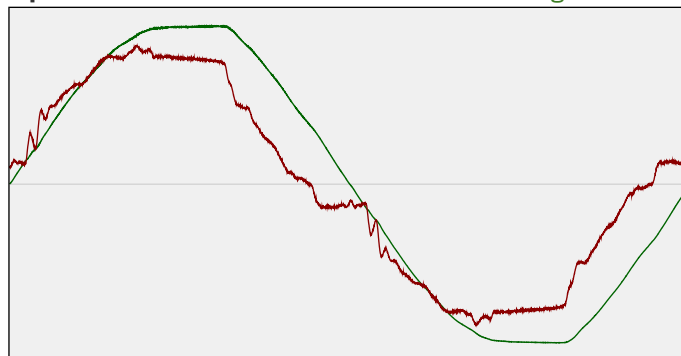
RMS Input voltage feed. V_{RMS}	229 V
RMS Input current feed. I_{RMS}	0.413 A
Total input power	89.3 W

Frequency of input power	50 Hz
Power factor	0.94
Displacement power factor	0.95

Total harmonic distortion of the current	13.18%
Total harmonic distortion of the voltage	2.69%

Input Power Curve

Voltage - Current



Efficiency

Radiated power efficiency: 46.3%



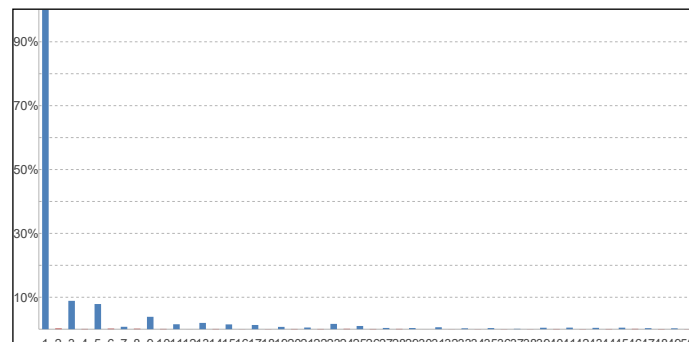
Lumen efficiency: 147 lm/W



Harmonics

3rd Harmonic	8.88%
5th Harmonic	7.89%
7th Harmonic	0.76%
9th Harmonic	3.88%
11th Harmonic	1.55%

Current Harmonics %



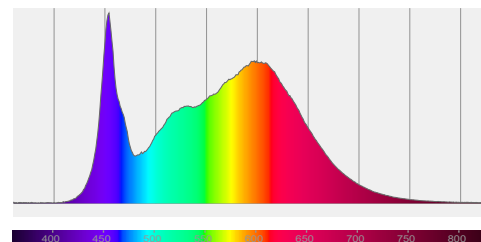
950-123 100W 4000K 95 specific configuration

Colour measurement details

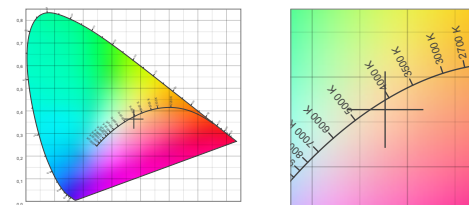
Total lumen output 13092 lm
 Correlated Colour Temperature 4015 K
 Colour coordinates CIE 1931 (x;y) = (0.377;0.364)
 Colour deviation from BBL Duv = -0.0051

TM30-18 Colour Fidelity Index R_f 85.7
 TM30-18 Colour Gamut Index R_g 96.4
 Colour Rendering Index (Ra) CRI 87.5
 Colour Rendering Index. (red component) R_9 = 28.0

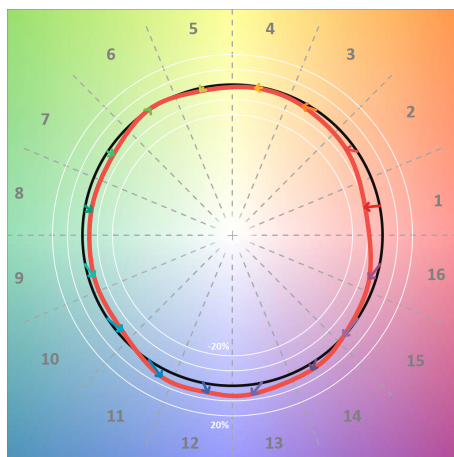
Colour Quality Scale CQS = 84.7
 Television Lighting Consistency Index TLCI = 75



Relative spectral power distribution



TM30 details

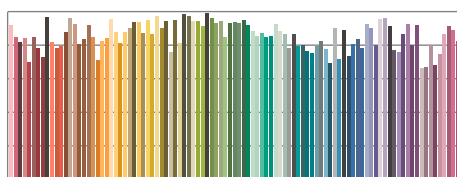


TM30 Colour vectors per hue bin

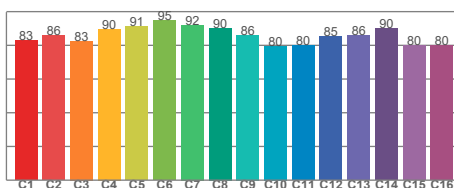


TM30 Colour distortion

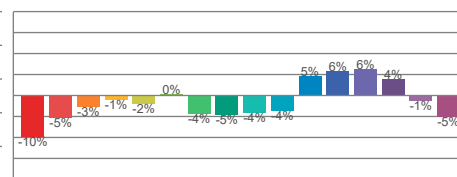
Hue Bin	R_f	Shifts (%)	
		Chroma	Hue
C1	83	-10%	1%
C2	86	-5%	5%
C3	83	-3%	9%
C4	90	-1%	4%
C5	91	-2%	2%
C6	95	0%	-1%
C7	92	-4%	-1%
C8	90	-5%	3%
C9	86	-4%	9%
C10	80	-4%	12%
C11	80	5%	13%
C12	85	6%	4%
C13	86	6%	-8%
C14	90	4%	-6%
C15	80	-1%	-14%
C16	80	-5%	-11%



TM30-18 R_f -values per reference colour

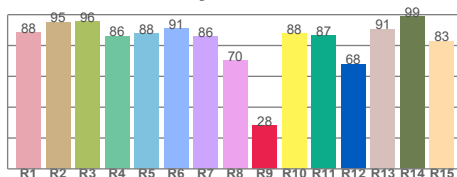


TM30-18 R_f -values per hue bin

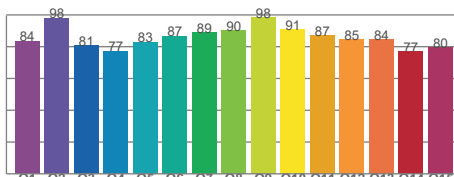


TM30 Chroma shift

Colour Quality details



Colour Rendering Index



Colour Quality Scale