

950-123 + 950-126 120W 5000K 105 specific configuration  
UFO high bay | 100/120/150W | 150 Lm/W | 3-CCT | 75/95/105°

## Introduction

### Purpose of this Document

This document provides information for 950-123 + 950-126 120W 5000K 105. During measurement, the product is used in a different mode where output power, colour temperature and/or beam angle are changed from factory standard. These adjustments can be made without altering the product and are designed to be set by the installer. In most cases, the options are set through switches on the product.

### Results

Total input power	116.1 W
Correlated Colour Temperature	5282 K
Total lumen output	15853 lm
Efficiency	137 lm/W

## Electrical measurement details

### Input Power

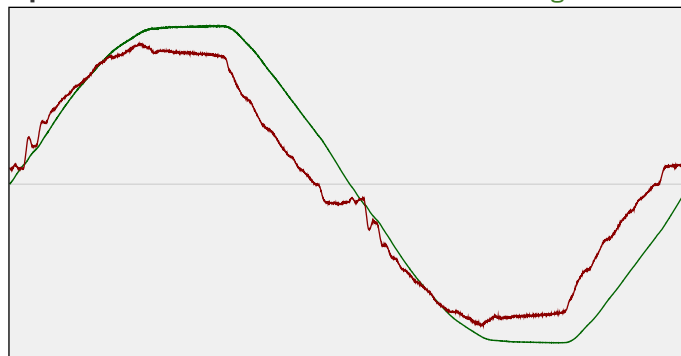
RMS Input voltage feed. $V_{RMS}$	230 V
RMS Input current feed. $I_{RMS}$	0.525 A
Total input power	116.1 W

Frequency of input power	50 Hz
Power factor	0.96
Displacement power factor	0.97

Total harmonic distortion of the current	11.01%
Total harmonic distortion of the voltage	2.89%

### Input Power Curve

Voltage - Current



### Efficiency

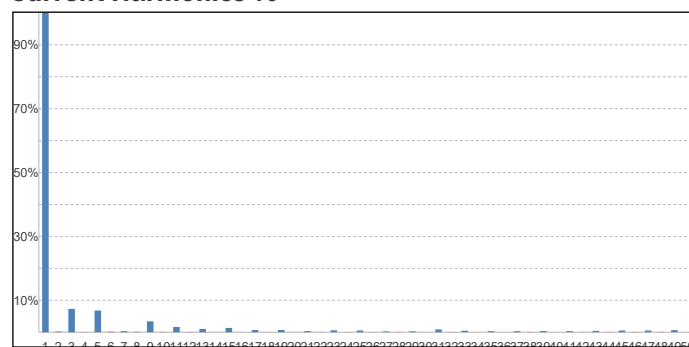
Radiated power efficiency: 43.5%

Lumen efficiency: 137 lm/W

### Harmonics

3rd Harmonic	7.3%
5th Harmonic	6.79%
7th Harmonic	0.33%
9th Harmonic	3.41%
11th Harmonic	1.63%

### Current Harmonics %



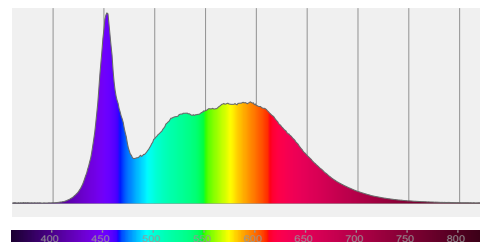
## 950-123 + 950-126 120W 5000K 105 specific configuration

### Colour measurement details

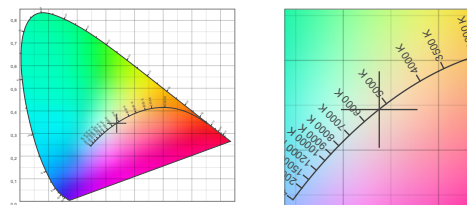
Total lumen output 15853 lm  
 Correlated Colour Temperature 5282 K  
 Colour coordinates CIE 1931 (x;y) = (0.338;0.345)  
 Colour deviation from BBL Duv = -0.0002

TM30-18 Colour Fidelity Index  $R_f$  85.1  
 TM30-18 Colour Gamut Index  $R_g$  96.3  
 Colour Rendering Index (Ra) CRI 86.1  
 Colour Rendering Index. (red component)  $R_9 = 20.8$

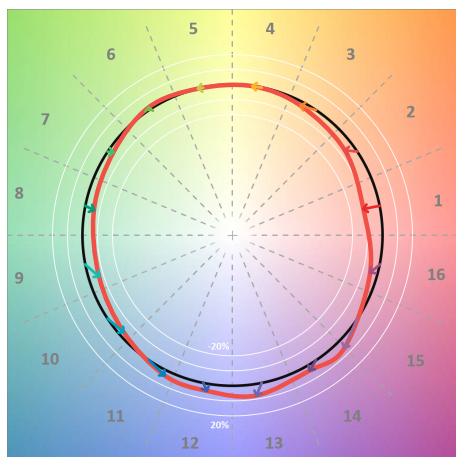
Colour Quality Scale CQS = 82.7  
 Television Lighting Consistency Index TLCI = 79



Relative spectral power distribution



### TM30 details

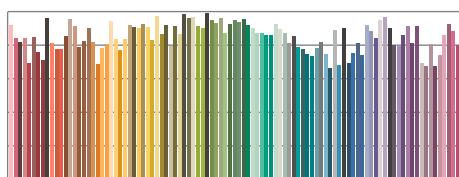


TM30 Colour vectors per hue bin

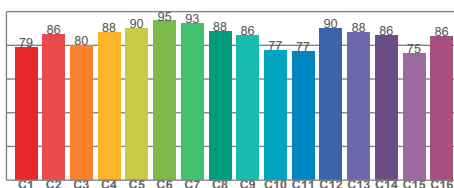


TM30 Colour distortion

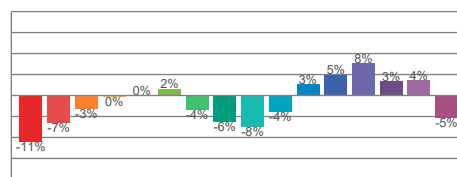
Hue Bin	$R_f$	Shifts (%)	
		Chroma	Hue
C1	79	-11%	0%
C2	86	-7%	5%
C3	80	-3%	10%
C4	88	0%	6%
C5	90	0%	3%
C6	95	2%	-1%
C7	93	-4%	-2%
C8	88	-6%	2%
C9	86	-8%	10%
C10	77	-4%	13%
C11	77	3%	14%
C12	90	5%	3%
C13	88	8%	-5%
C14	86	3%	-7%
C15	75	4%	-21%
C16	86	-5%	-7%



TM30-18  $R_f$ -values per reference colour

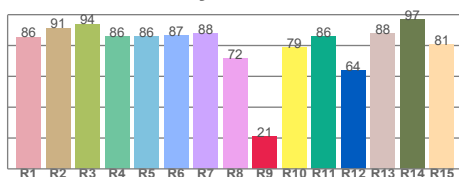


TM30-18  $R_f$ -values per hue bin

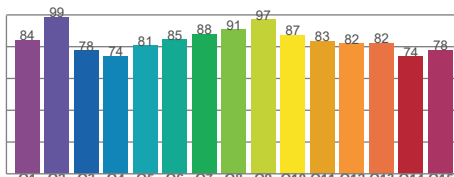


TM30 Chroma shift

### Colour Quality details



Colour Rendering Index



Colour Quality Scale