

950-123 + 950-126 100W 5000K 75 specific configuration
UFO high bay | 100/120/150W | 150 Lm/W | 3-CCT | 75/95/105°

Introduction

Purpose of this Document

This document provides information for 950-123 + 950-126 100W 5000K 75. During measurement, the product is used in a different mode where output power, colour temperature and/or beam angle are changed from factory standard. These adjustments can be made without altering the product and are designed to be set by the installer. In most cases, the options are set through switches on the product.

Results

Total input power	91.3 W
Correlated Colour Temperature	5327 K
Total lumen output	11581 lm
Efficiency	127 lm/W

Electrical measurement details

Input Power

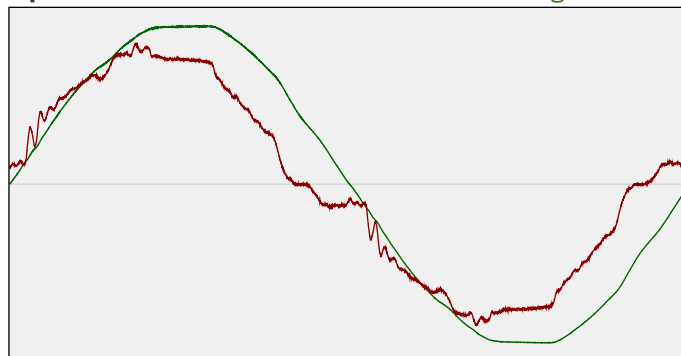
RMS Input voltage feed. V_{RMS}	230 V
RMS Input current feed. I_{RMS}	0.420 A
Total input power	91.3 W

Frequency of input power	50 Hz
Power factor	0.94
Displacement power factor	0.95

Total harmonic distortion of the current	12.82%
Total harmonic distortion of the voltage	2.13%

Input Power Curve

Voltage - Current



Efficiency

Radiated power efficiency: 40.6%



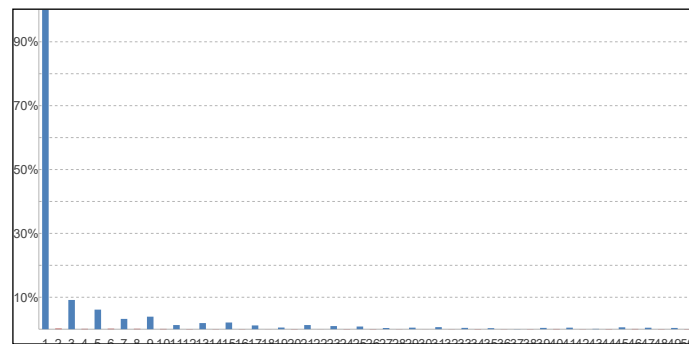
Lumen efficiency: 127 lm/W



Harmonics

3rd Harmonic	9.16%
5th Harmonic	6.13%
7th Harmonic	3.23%
9th Harmonic	3.92%
11th Harmonic	1.3%

Current Harmonics %



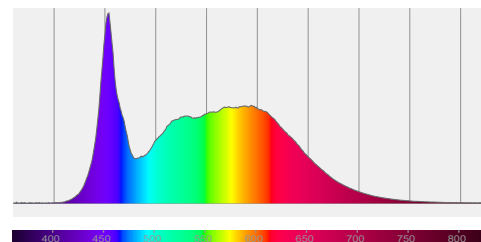
950-123 + 950-126 100W 5000K 75 specific configuration

Colour measurement details

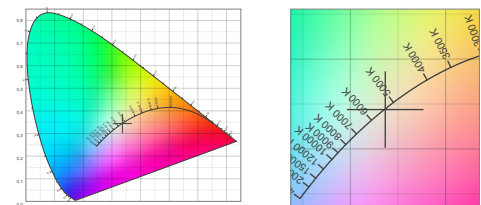
Total lumen output 11581 lm
 Correlated Colour Temperature 5327 K
 Colour coordinates CIE 1931 (x;y) = (0.337;0.344)
 Colour deviation from BBL Duv = -0.0004

TM30-18 Colour Fidelity Index R_f 85.2
 TM30-18 Colour Gamut Index R_g 96.1
 Colour Rendering Index (Ra) CRI 86.5
 Colour Rendering Index. (red component) $R_9 = 23.0$

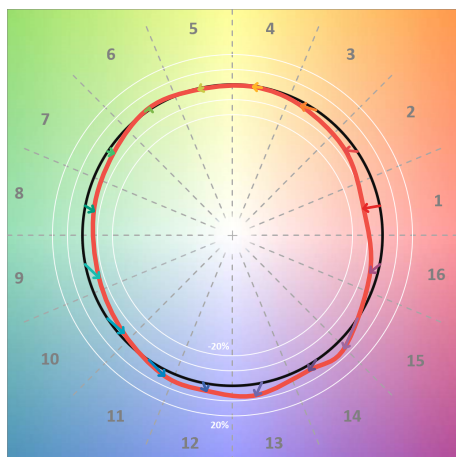
Colour Quality Scale CQS = 82.9
 Television Lighting Consistency Index TLCI = 80



Relative spectral power distribution



TM30 details

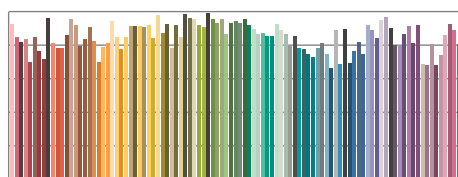


TM30 Colour vectors per hue bin

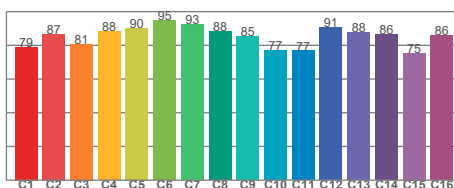


TM30 Colour distortion

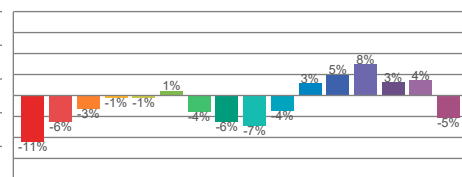
Hue Bin	R_f	Shifts (%)	
		Chroma	Hue
C1	79	-11%	0%
C2	87	-6%	5%
C3	81	-3%	10%
C4	88	-1%	6%
C5	90	-1%	3%
C6	95	1%	-1%
C7	93	-4%	-1%
C8	88	-6%	2%
C9	85	-7%	10%
C10	77	-4%	14%
C11	77	3%	14%
C12	91	5%	3%
C13	88	8%	-5%
C14	86	3%	-7%
C15	75	4%	-21%
C16	86	-5%	-6%



TM30-18 R_f -values per reference colour

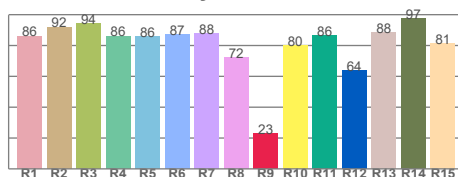


TM30-18 R_f -values per hue bin

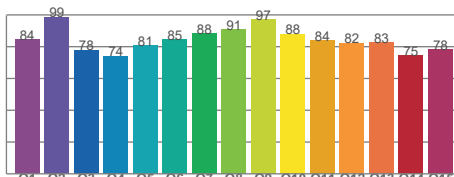


TM30 Chroma shift

Colour Quality details



Colour Rendering Index



Colour Quality Scale