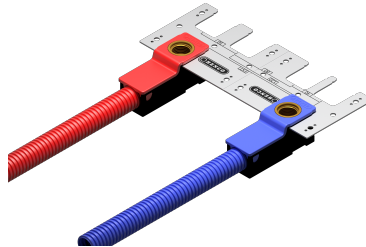


WBS-1604: Wall box 2 pair Red/Blue Compression 1/2"Fx16mm



Commercial information

Wall box

- High-quality corrosion-proof built-in box made of plastic.
- Box in a neutral colour with a blue and red cover } Small dimensions for easy grinding (95x33x40 mm).
- Can also be easily combined with drywalls on steel profiles.
- Homogeneous closure for installation in masonry or plastering.
- Fitted with a groove to hold the pipe sleeve in place and ensure connection to the pipe.
- The built-in box can be opened quickly and easily.
- The pipe and coupling can be easily accessed without damaging the wall.
- Suited for heating and sanitary applications.
- Corrosion-proof, for a perforated steel mounting bracket.
- Inter-axis distances of 40, 50, 80, 120 and 153 mm, indicated on the mounting bracket.
- Ready for all common H-blocks and sanitary faucets.
- Handy mounting rail available as accessory for hollow drywalls or floor levelling screeds.
- Available in 16 and 20 mm press fitting and 16 mm screw fitting.

Certificates

KIWA, KOMO, ATG, ÖN EN 21003-2/-3, ÖVGW Wasser, ETA, WRAS, GOST-R, PZH, ITC, TSU, EMI

Applications

Potable water, Heating, Cooling, Sanitary

Solutions

Building installations, Industry, Utility, Shipbuilding

Technical characteristics

Housing material	Brass	Medium temperature (continuous)	-10 70 Degrees celsius
Surface protection	Untreated	Max. operating pressure at 20 °C	10 Bar
Shape	Straight		
Thread size	1/2 inch		
System specific	✓		
Connection	Press sleeve		
KIWA certified	✓		

Related products

Product code	GTIN	Description
BE16	05414764346406	Henco Jaws (universal) BE/TH-Profile 16x2
PLUG04-R80	05414764346406	Afdrukplug 1/2" -80mm Rood

Image

