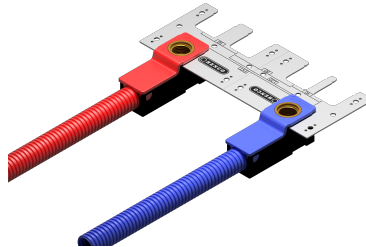


WBP-1604-RO: Wall box 1x red 1/2"Fx16mm press



Commercial information

Wall box

- High-quality corrosion-proof built-in box made of plastic.
- Box in a neutral colour with a blue and red cover } Small dimensions for easy grinding (95x33x40 mm).
- Can also be easily combined with drywalls on steel profiles.
- Homogeneous closure for installation in masonry or plastering.
- Fitted with a groove to hold the pipe sleeve in place and ensure connection to the pipe.
- The built-in box can be opened quickly and easily.
- The pipe and coupling can be easily accessed without damaging the wall.
- Suited for heating and sanitary applications.
- Corrosion-proof, for a perforated steel mounting bracket.
- Inter-axis distances of 40, 50, 80, 120 and 153 mm, indicated on the mounting bracket.
- Ready for all common H-blocks and sanitary faucets.
- Handy mounting rail available as accessory for hollow drywalls or floor levelling screeds.
- Available in 16 and 20 mm press fitting and 16 mm screw fitting.

Certificates

ATG, DVGW Wasser, ETA, KIWA, ÖVGW Wasser, WRAS, KOMO, STF, ÖN EN 21003-2/-3, GOST-R, ITC, TSU, QB (CSTBat), AFNOR, ACS, PZH, DNV-GL, Sans 21003, Kontrol Biro, EMI

Applications

Potable water, Heating, Compressed air, Cooling, Sanitary

Solutions

Building installations, Industry, Utility, Shipbuilding

Technical characteristics

Housing material	Brass	Medium temperature (continuous)	-10 70 Degrees celsius
Housing material	Brass	Max. operating pressure at 20 °C	16 Bar
Surface protection	Untreated		
Shape	Right-angled		
Thread size	1/2 inch		
System specific	✓		
Nominal diameter connection 1	DN 12		
Nominal diameter connection 2	1/2 inch (15)		
Connection	Press sleeve		
Thread size tap connection	1/2 inch		
Contour code	TH		
DVGW quality mark for gas	✗		
DVGW quality mark for water	✓		
Compliant with NF 545	✗		
KIWA certified	✓		
Gastec QA mark	✗		
KOMO certified	✓		
Type approval according to BBR/EKS	✗		

Related products