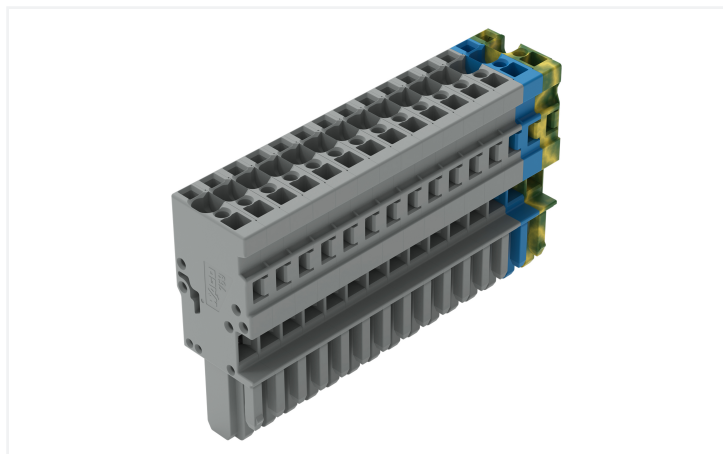



## Data Sheet | Item Number: 769-115/000-038

1-conductor female connector; CAGE CLAMP®; 4 mm²; Pin spacing 5 mm; 15-pole; coding finger; 4,00 mm²; green-yellow/blue/gray

<https://www.wago.com/769-115/000-038>



Color:  green-yellow/blue/gray



Dimensions in mm

Female connector, 769 Series, operating tool

This female connector (item number 769-115/000-038) simplifies electrical installations. Conductors can only be connected to this female connector if their strip length is between 8 and 9 mm. Pluggable rail-mount terminal blocks are hugely popular in switchgear and control systems, for example, in railroad technology. They combine the best of rail-mount terminal blocks and connectors to create the perfect solution. Variable wiring systems make pre-assembly easy, which leads to considerable time and cost savings in production, installation, operation, and maintenance. This product features conductor terminals and utilizes CAGE CLAMP®. Our CAGE CLAMP® connection offers a safe and maintenance-free way to connect all types of conductors. You do not need to prepare the conductor in any way, such as crimping ferrules. The dimensions are (75 x 45.2 x 18.3) mm (width x height x depth). Depending on the conductor type, this female connector is designed for conductor cross sections ranging from 0.08 mm² to 4 mm².

An operating tool is used to operate this female connector/socket.

### Notes

Safety Information

According to EN 61984, pluggable connectors without current interrupting capacity must not be mated or unmated when live or under load.

### Electrical data

| Ratings per                     | IEC/EN 61984 |     |    |
|---------------------------------|--------------|-----|----|
| Overvoltage category            | III          | III | II |
| Pollution degree                | 3            | 2   | 2  |
| Nominal voltage                 | 500 V        | -   | -  |
| Rated impulse withstand voltage | 6 kV         | -   | -  |
| Rated current                   | 32 A         | -   | -  |

### General information

Wiring direction: Front-entry wiring

## Connection Data

|                            |    |
|----------------------------|----|
| Clamping units             | 15 |
| Total number of potentials | 15 |

### Connection 1

|                                 |  |
|---------------------------------|--|
| Connection technology           | CAGE CLAMP®                                |
| Actuation type                  | Operating tool                             |
| Connectable conductor materials | Copper                                     |
| Nominal cross-section           | 4 mm <sup>2</sup> / 12 AWG                 |
| Solid conductor                 | 0.08 ... 4 mm <sup>2</sup> / 28 ... 12 AWG |
| Fine-stranded conductor         | 0.08 ... 4 mm <sup>2</sup> / 28 ... 12 AWG |
| Strip length                    | 8 ... 9 mm / 0.31 ... 0.35 inches          |
| Pole number                     | 15   |
| Wiring direction                | Front-entry wiring                         |

## Physical data

|              |                       |
|--------------|-----------------------|
| Width        | 75 mm / 2.953 inches  |
| Height       | 45.2 mm / 1.78 inches |
| Depth        | 18.3 mm / 0.72 inches |
| Module width | 5 mm / 0.197 inches   |

## Mechanical data

|  |              |
|--|--------------|
| Variable coding  | Yes          |
| Direct ground contact to DIN-rail/drilled hole/housing | No           |
| Marking level  | Side marking |
| Anti-rotation protection                               | Yes          |

## Plug-in connection

|                                      |                         |
|--------------------------------------|-------------------------|
| Contact type (pluggable connector)   | Female connector/socket |
| Connector (connection type)          | for conductor           |
| Mismating protection                 | No                      |
| Plugging without loss of pin spacing | Yes                     |

## Material data

|                                    |  |
|------------------------------------|--|
| Note (material data)               | <a href="#">Information on material specifications can be found here</a> |
| Color                              | green-yellow/blue/gray   |
| Material group                     | I  |
| Insulation material (main housing) | Polyamide (PA66)   |
| Flammability class per UL94        | V0   |
| Fire load                          | 0.792 MJ   |
| Halogen-free                       | Yes  |
| Weight                             | 47.8 g   |

## Environmental requirements

|                                  |                 |
|----------------------------------|-----------------|
| Processing temperature           | -35 ... +85 °C  |
| Continuous operating temperature | -60 ... +105 °C |

**Commercial data**

|                       |               |
|-----------------------|---------------|
| PU (SPU)              | 10 pcs        |
| Packaging type        | Box           |
| Country of origin     | DE            |
| GTIN                  | 4050821653578 |
| Customs tariff number | 85366990990   |

**Product Classification**

|             |                      |
|-------------|----------------------|
| UNSPSC      | 39121409             |
| eCl@ss 10.0 | 27-14-11-06          |
| eCl@ss 9.0  | 27-14-11-06          |
| ETIM 9.0    | EC001284             |
| ETIM 10.0   | EC001284             |
| ECCN        | NO US CLASSIFICATION |

**Environmental Product Compliance**

|                        |                         |
|------------------------|-------------------------|
| RoHS Compliance Status | Compliant, No Exemption |
|------------------------|-------------------------|

**Approvals / Certificates**

**General approvals**



| Approval                                | Standard | Certificate Name |
|---|----------|------------------|
| CSA<br>CSA Group                        | C22.2    | 1101144          |
| UL<br>Underwriters Laboratories<br>Inc. | UL 1059  | E45172           |
| UL<br>Underwriters Laboratories<br>Inc. | UL 1977  | E 45171          |

**Declarations of conformity and manufacturer's declarations**



| Approval                      | Standard | Certificate Name |
|-------------------------------|----------|------------------|
| Railway<br>WAGO GmbH & Co. KG | -        | Z00004428.000    |

**Downloads**

**Environmental Product Compliance**

|   |                   |
|---|-------------------|
| <b>Compliance Search</b>                            |                   |
| Environmental Product Compliance<br>769-115/000-038 | <a href="#">↓</a> |

Documentation

| Bid Text        |            |                 |                   |
|-----------------|------------|-----------------|-------------------|
| 769-115/000-038 | 19.02.2019 | xml<br>3.26 KB  | <a href="#">↓</a> |
| 769-115/000-038 | 04.10.2017 | doc<br>25.50 KB | <a href="#">↓</a> |

CAD/CAE-Data

| CAE data                             |                   |
|--------------------------------------|-------------------|
| EPLAN Data Portal<br>769-115/000-038 | <a href="#">↓</a> |
| WSCAD Universe<br>769-115/000-038    | <a href="#">↓</a> |

1 Compatible Products

1.1 Optional Accessories

1.1.1 Cover

1.1.1.1 Cover



**Item No.: 769-436**

Jumper cover; for 1-conductor female plugs; for 5 poles; gray

1.1.2 Ferrule

1.1.2.1 Ferrule



**Item No.: 216-301**

Ferrule; Sleeve for 0.25 mm<sup>2</sup> / AWG 24; insulated; electro-tin plated; yellow



**Item No.: 216-302**

Ferrule; Sleeve for 0.34 mm<sup>2</sup> / 22 AWG; insulated; electro-tin plated; light turquoise



**Item No.: 216-201**

Ferrule; Sleeve for 0.5 mm<sup>2</sup> / 20 AWG; insulated; electro-tin plated; electrolytic copper; acc. to DIN 46228, Part 4/09.90; white



**Item No.: 216-101**

Ferrule; Sleeve for 0.5 mm<sup>2</sup> / AWG 22; un-insulated; electro-tin plated; silver-colored



**Item No.: 216-202**

Ferrule; Sleeve for 0.75 mm<sup>2</sup> / 18 AWG; insulated; electro-tin plated; gray



**Item No.: 216-102**

Ferrule; Sleeve for 0.75 mm<sup>2</sup> / AWG 20; un-insulated; electro-tin plated; silver-colored



**Item No.: 216-203**

Ferrule; Sleeve for 1 mm<sup>2</sup> / AWG 18; insulated; electro-tin plated; red



**Item No.: 216-103**

Ferrule; Sleeve for 1 mm<sup>2</sup> / AWG 18; un-insulated; electro-tin plated



**Item No.: 216-204**

Ferrule; Sleeve for 1.5 mm<sup>2</sup> / AWG 16; insulated; electro-tin plated; black



**Item No.: 216-104**

Ferrule; Sleeve for 1.5 mm<sup>2</sup> / AWG 16; un-insulated; electro-tin plated; silver-colored



**Item No.: 216-206**

Ferrule; Sleeve for 2.5 mm<sup>2</sup> / AWG 14; insulated; electro-tin plated; blue

### 1.1.3 Insulation stop

#### 1.1.3.1 Insulation stop



**Item No.: 769-470**

Insulation stop; 0.08 - 0.2 mm<sup>2</sup> "s" (0.14 mm<sup>2</sup> "f-st"); 5 pieces/strip; white



**Item No.: 769-471**

Insulation stop; 0.25 - 0.5 mm<sup>2</sup>; 5 pieces/strip; light gray



**Item No.: 769-472**

Insulation stop; 0.75 - 1 mm<sup>2</sup>; 5 pieces/strip; dark gray

### 1.1.4 Jumper

#### 1.1.4.1 Jumper



**Item No.: 769-402**

Jumper; insulated; gray

### 1.1.5 Locking system

#### 1.1.5.1 Locking system



**Item No.: 769-430**

Locking lever; for female connectors; 1 part; Pin spacing 5 mm; 2-pole; gray



**Item No.: 769-431**

Locking lever; for female connectors; 1 part; Pin spacing 5 mm; 2-pole; orange

### 1.1.6 Marking

#### 1.1.6.1 Label



**Item No.: 210-805**

Labels; for Smart Printer; permanent adhesive; 6 x 15 mm; 3000 pieces on roll; white



**Item No.: 210-805/000-002**

Labels; for Smart Printer; permanent adhesive; 6 x 15 mm; 3000 pieces on roll; yellow

#### 1.1.6.2 Marker



**Item No.: 2009-145**

Mini-WSB Inline; for Smart Printer; 1700 pieces on roll; stretchable 5 - 5.2 mm; plain; snap-on type; white



**Item No.: 248-501**

Mini-WSB marking card; as card; not stretchable; plain; snap-on type; white

#### 1.1.6.3 Marking strip



**Item No.: 210-831**

Marking strips; on reel; 2.3 mm wide; plain; Self-adhesive; white



**Item No.: 210-832**

Marking strips; on reel; 3 mm wide; plain; Self-adhesive; white



**Item No.: 210-834**

Marking strips; on reel; 5 mm wide; plain; Self-adhesive; white

## 1.1.7 Protective warning marker

### 1.1.7.1 Cover



**Item No.: 280-415**

Protective warning marker; for 5 terminal blocks; with high-voltage symbol, black; yellow

## 1.1.8 Strain relief

### 1.1.8.1 Strain relief



**Item No.: 769-1615**

Strain relief housing; for female and male connectors; 2 parts; Pin spacing 5 mm; 15-pole; gray



**Item No.: 769-414**

Strain relief plate; for female and male connectors; 1 part; Pin spacing 5 mm; 10- to 15-pole; gray

## 1.1.9 Test and measurement

### 1.1.9.1 Testing accessories



**Item No.: 210-136**

Test plug; 2 mm Ø; with 500 mm cable; red

## 1.1.10 Tool

### 1.1.10.1 Operating tool



**Item No.: 210-490**

Operating tool



**Item No.: 769-434**

Operating tool; made of insulating material; 1-way; loose; white

## Installation Notes

### Conductor termination



**CAGE CLAMP® connection**

Female plug: Inserting/removing a conductor via operating tool.  
Operation 90° to conductor is also possible.  
With ferruled conductors, it is necessary to use a terminal block one size smaller than the conductor's nominal cross-section.

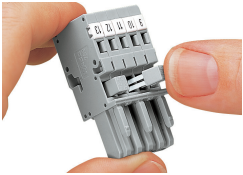


Operating lever  
Inserting a conductor – side-entry wiring (example shows a female plug).



Operating tool  
Inserting a conductor – side-entry wiring (example shows a female plug).  
With ferruled conductors, it is necessary to use a terminal block one size smaller than the conductor's nominal cross-section.

## Commoning



Commoning 1-conductor female plugs via miniature adjacent jumpers.

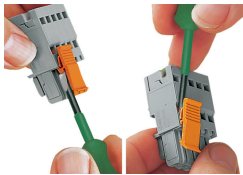
Jumper cover for 1-conductor female plugs

## Coding



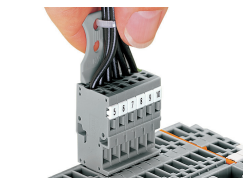
Coding a female plug by removing coding finger(s) via cutting tool. Do not remove the first and last coding fingers or use an additional locking lever.

## Locking system



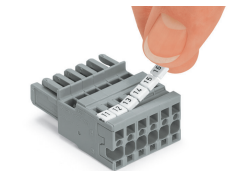
Locking/releasing a lever.

## Strain relief



Removing a female plug via conductor bundle provided with strain relief plate.

## Marking



Labeling a female plug with CAGE CLAMP® connection via Mini-WSB Quick Markers.