

CXpro^{HD} v1.07.04

Summary

This update includes improved handling of smart router connections, adds support for TLS 1.3 and modifies wildcards in **BACnet Date Range** properties. In addition, several issues have been resolved.

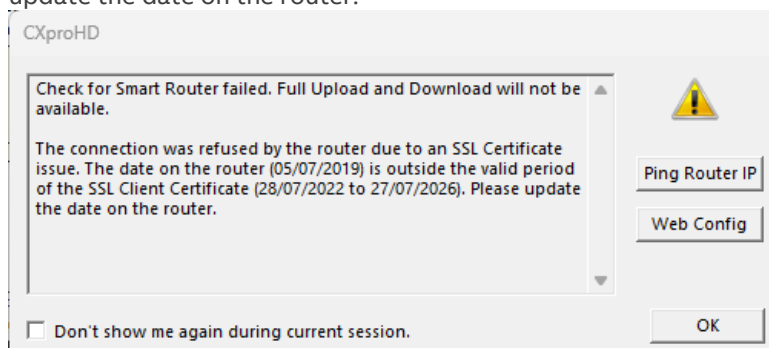
Features

SMART ROUTER CONNECTION

Due to the nature of HTTPS, there are many reasons why a **Smart Router** check may fail. We have improved the messaging when this fails to give a better indication of how or why it failed.

Improvements made to the **Smart Router** check:

1. After getting the IP Address, if the router is an ABB Cylon® device, the firmware version is requested. If the firmware version is < 9.1.0 the user is informed that it is not a **Smart Router**, and prompted to update the firmware.
2. If a **smart router** connection is rejected due to an SSL certificate issue (HTTP error 400), the date and valid period of the **SSL Client** certificate are requested from the router. These are then displayed and the user is prompted to update the date on the router.



3. General error handling around the **Smart Router** check has been updated to make warnings to users more helpful. Messaging has been approved, and two buttons have been added to help users troubleshoot their issues when the error/warning is shown:

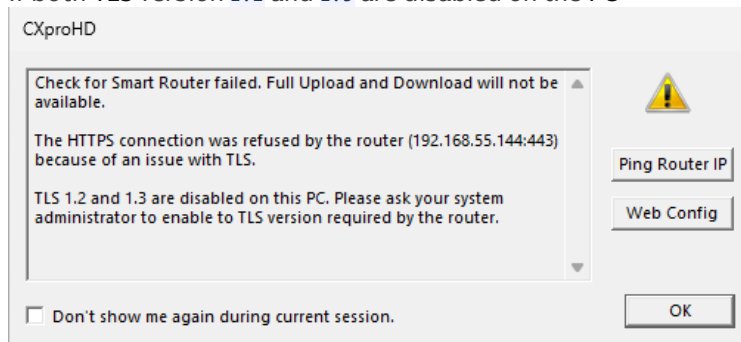
- **Ping Router IP** – will Ping the IP address of the router and show success or failure.
- **Web Config** – will open a browser to the IP Address of the router, which will show the **Web Configuration** pages for the ABB Cylon controllers.

TLS 1.3 SUPPORT

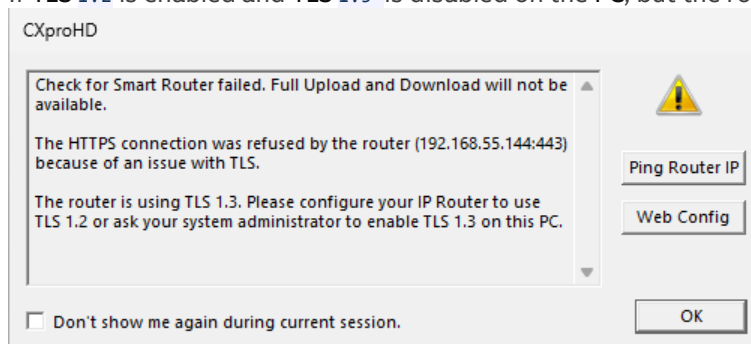
CXproHD now supports TLS 1.3 for Smart Routers. This is only supported on Windows 11 and greater.

Error handling for TLS issues will inform users if there is a protocol version issue between their PC and the Router they are attempting to communicate with.

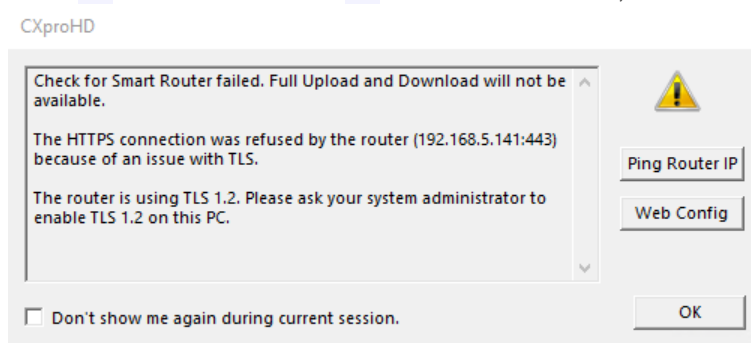
1. If both TLS version 1.2 and 1.3 are disabled on the PC



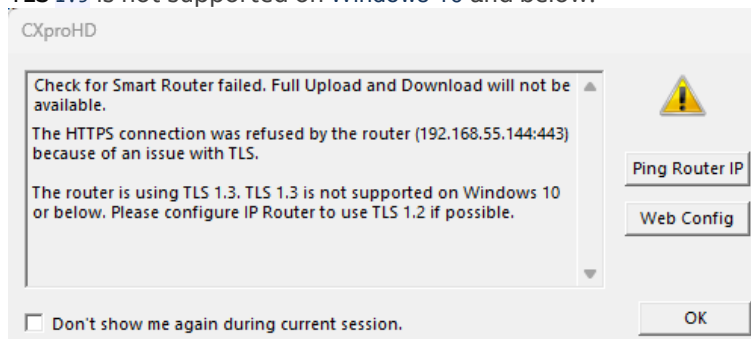
2. If TLS 1.2 is enabled and TLS 1.3 is disabled on the PC, but the router is using TLS 1.3:



3. If TLS 1.2 is disabled and TLS 1.3 is enabled on the PC, but the Router is using TLS 1.2:



4. If TLS 1.2 is enabled on a Windows 10 PC, but the router is using TLS 1.3 then special handling is required because TLS 1.3 is not supported on Windows 10 and below.



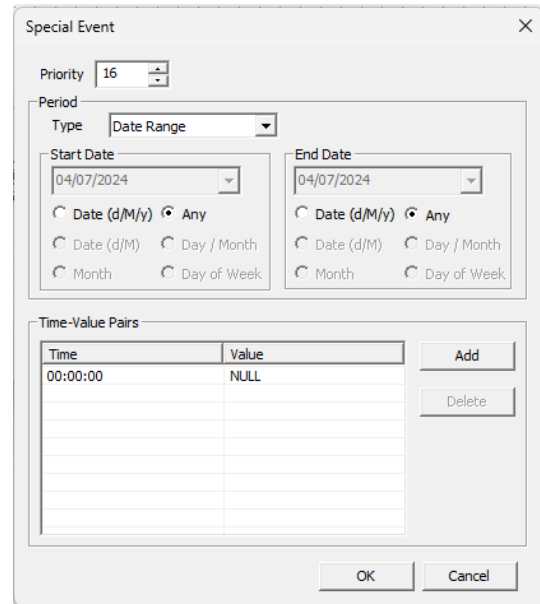
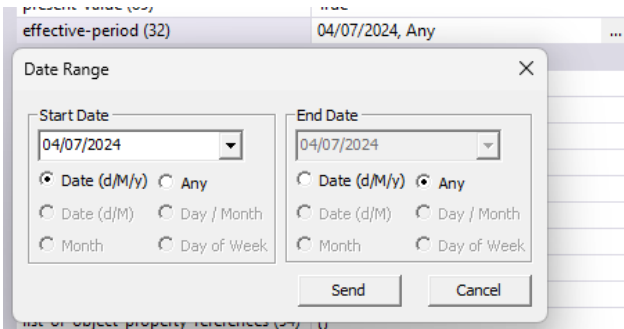
WILDCARDS IN DATE RANGE BACNET PROPERTIES

Wildcards have been limited when it comes to BACnet properties that contain a Date Range.

The new Date Range formats allowed are:

1. Start Date can be "Any", End Date can be "Any"
2. Start Date can be exact date (D/M/Y), End Date can be "Any"
3. Start Date can be "Any", End Date can be exact date (D/M/Y)
4. Start Date can be the exact date (D/M/Y), End Date can be the exact date (D/M/Y).

All other date formats will be disabled. They are still visible in the dialogs to support viewing an old schedule on an older controller.



RESOLVED ISSUES

- ST-10941 Fixed issue where downloads could fail when special characters outside the ASCII range were added to the Audit Log.
- ST-10679 Fixed an issue where Site Discovery sometimes did not save the correct FLX Configuration for a discovered controller.
- ST-10812 The default sensor type for "Uninputs with Triacs" is now correctly set to "0-10V".
- ST-10828 Updated ASPECT® Export to only show errors if individual parts of the reference path are longer than 64 characters.
- ST-10697 Fixed issue that caused macro corruption when digital connectors were used in a macro.
- ST-10829 Fixed an issue where CXproHD was incorrectly blocking the readdressing of Uninput point numbers.
 - Added extra data on alarms to the strategy download to be used when adding BACnet controllers to the Unitron Command Centre.
- ST-10989 Fixed crash issue that occurred when editing an MSTP device name.
- ST-11011 Fixed issue in site discovery where all MSTP devices under a multi-port router were being added, even though not all were selected for addition.
- ST-10646 Fixed an issue where selecting 'Delay restart ...' caused a crash when upgrading FW in some controllers.

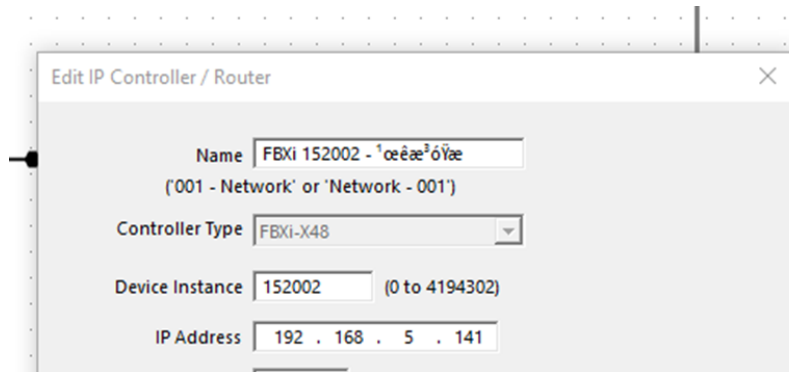
KNOWN ISSUES

DIALOG TEXT FOR NON-ENGLISH VERSIONS

In some CXpro^{HD} dialogs, characters specific to the Polish, German, or any non-Western European language, may show incorrectly.

While this is expected if the PC's language does not support these characters, it also happens if the language of the PC is set to Polish, German, or any non-Western European language.

An example is the **Edit IP Controller / Router** dialog. The **Name** field shows invalid Polish characters entered on a Polish Language PC.



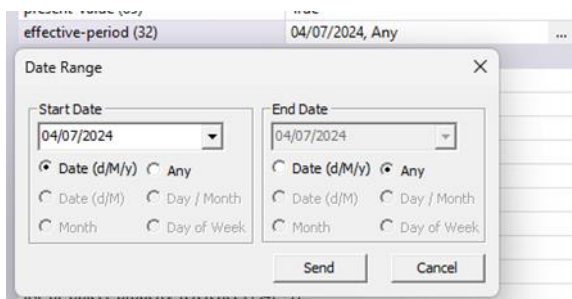
BACNET SCHEDULE DOWNLOAD

When editing the **effective-period** property of a BACnet Schedule and sending it to the controller, the firmware returns an error if both the **Start Date** and **End Date** are set to "Any".

This known issue on FLXeon firmware version 9.3.x will be fixed in a future release.

Workaround:

To ensure the schedule is always **On**, set the **Start Date** to a specific date in the past and leave the **End Date** as any.



Customer Impact

Customers affected by any of the issues listed here should update to v1.07.04 as soon as is practical.