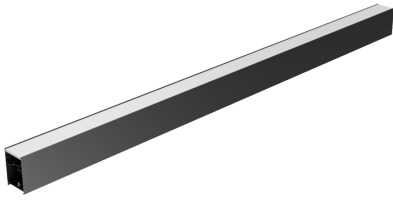


Features

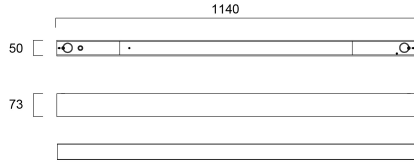
- Mounting accessory for Otao Linear range to align adjacent luminaires in a straight line. Use this kit to make sure the luminaires are perfectly aligned in a light line. Length 1140mm, black (RAL9011) finishing colour, through wiring included. Fast connectors (0041820) to be ordered separately.



Product Overview

Product name	OTAO LINEAR 1.2 DUMMY + TW BK
Technology	LED (3 SDCM)
Housing	Aluminium
General application	Education, Office
ETIM Class	EC002557
Photobiological Risk Group	Not applicable
Housing colour	RAL9011
IP rating	IP20
IK rating	IK03
Product EAN number	5410288408309
Warranty	5 years

Technical drawings



Data table

GENERAL DATA

Product name	OTAO LINEAR 1.2 DUMMY + TW BK
Technology	LED (3 SDCM)
Type of accessory	Coupler/connector straight
Housing	Aluminium
General application	Education, Office
ETIM Class	EC002557
Warranty	5 years

OPTICAL DATA

Photobiological Risk Group	Not applicable
----------------------------	----------------

ELECTRICAL DATA

Control gear required	No
-----------------------	----

PHYSICAL DATA

Housing colour	RAL9011
IP rating	IP20
IK rating	IK03
Nominal Product Length (mm)	1140
Nominal Product Width (mm)	50

OTAO LINEAR 1.2 DUMMY + TW BK 0040830

Nominal Product Height (mm)	73
Weight (kg)	1.4

PACKAGING

Product EAN number	5410288408309
Packaging single length / height (cm)	122.0
Packaging single width (cm)	6.1
Packaging single depth (cm)	7.8
DUN14 (inner)	15410288408306
Units per outer package	4
Packaging outer length / height (cm)	124.0
Packaging outer width (cm)	14.2

SAFETY DATA

Special purpose lamp	No
Dry applications use only	No
Suitable for household illumination	No