

xComfort – Climate protection starts in your home

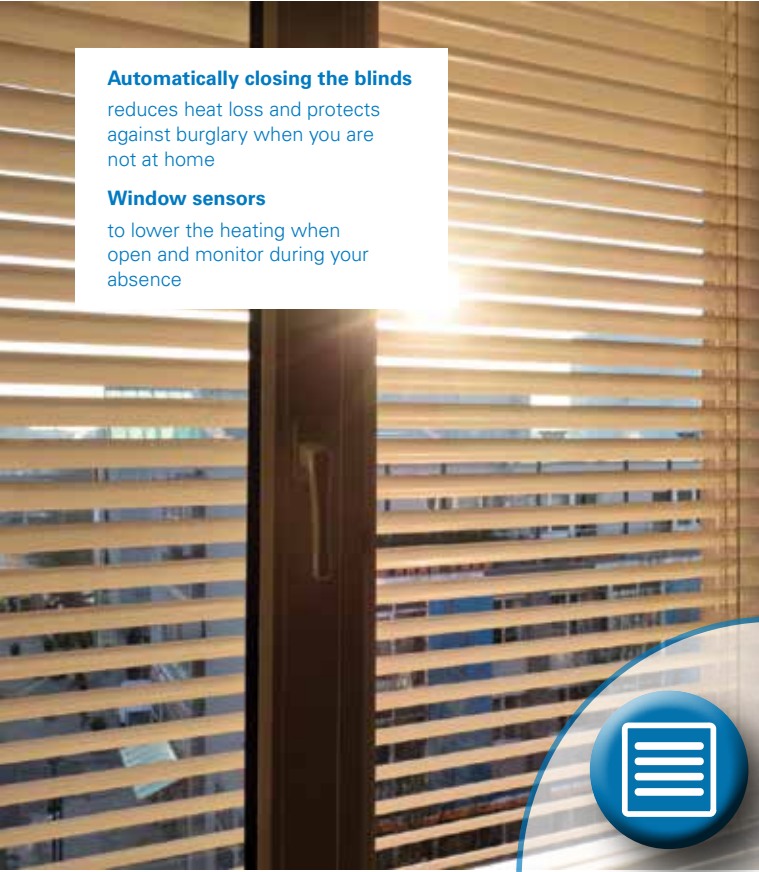
Save energy and increase the comfort in your home with Eaton climate management solutions

EATON

Powering Business Worldwide

Increase comfort and save energy

How it works



Automatically closing the blinds

reduces heat loss and protects against burglary when you are not at home

Window sensors

to lower the heating when open and monitor during your absence



Individual temperature

control in each room saves up to 6% in heating costs per degree Celsius without comfort loss

Motion sensor

Reduce temperature to economy when there is no activity in a room for a long period to save energy.



Floor heating per zone

control of water-based or electrical heating systems on demand - that saves cost and increases comfort



Radiator heating

circulation of warm water in the heating circuit only on demand saves energy and cost

Well-being for your daily life

For each situation



For electrical, warm water heating systems or combination: Use Eaton xComfort climate management solutions to increase the comfort in your house and to prevent waste of energy.

With the xComfort climate solutions, everything is under control in every room, monitoring and controlling heating, cooling, light and blinds.

Temperature is a very important factor for each person's well-being. The temperature in spaces that are not used could without a problem be decreased to save in a simple manner the heating costs of a home. With xComfort this is possible for both new and existing buildings.

In an European climate heating and cooling the house is very important. On the other hand, the increasing shortage of fossil fuels, rising energy costs and environmental awareness also mean that we have to use the necessary energy for this purpose wisely. xComfort can make an important contribution!

A temperature control system with heating management ensures that there is only heating at the time when it is needed. With xComfort, it is possible to control water-based and electricity heating. Features like night mode and power mode for longer absences are naturally available and easy to adjust. Each room or temperature zone can have its own individual temperature control with temperature profiles that are adapted to the daily use of this room or zone. For example: With a single tap on your mobile phone, your child's bedroom can be set to night-time mode. The power is switched off at the wall sockets, the temperature is turned down three degrees and the light fades to nearly off.

The xComfort sensors also enables you to save energy. For example as soon as you open a door or window, the xComfort door/window sensor will set the heating to frost protection, and it will only return the temperature to comfort levels once the door or window is closed again. The xComfort motion sensor can trigger to lower, after a certain period, the temperature from comfort to economy when everyone has left the room and set it back to comfort levels once you enter the room again.

The xComfort system can be used for anything from updating existing installations or extending, renewing and improving them, to setting up completely new installations. You can start small, with simple and practical functions and expand later as the need or desire arises.

to go



at home



xComfort climate management solutions Actuators



Typical applications are:

- Light control
- Climate control
- Blind & shutter control
- Safety management
- Energy monitoring & visualization
- Remote Information & control

Heating Profiles:

- Floor heating foils
- Floor heating cables
- Heating panels
- Infrared panels
- Water-based heating (valve drive CHVZ-01/04)

The xComfort switching and dimming actuators are used to turn the heaters, heating cables and radiator valves on and off. Dimming actuators are used in situations where silent switching is preferred and switching actuators where high load needs to be switched. Furthermore, there are dedicated heating actuators like the valve drive for radiators and the multi-channel heating actuator for floor heating systems which support up to 12 zones.

Heating Actuators

The xComfort heating actuators are used to intelligent control the heating sources, heaters, heating cables and radiator. For water based systems, the silent version (1A; e.g. for sleeping rooms) is suitable for thermoelectric valve drives and the heavy duty version (10 A and 16 A) to control high load heating sources. Both are equipped with an intelligent algorithm for a smooth temperature regulation offering maximum comfort.



1A noiseless



10 A heavy duty



16 A heavy duty

Highlights

- Efficient and smooth temperature control based on Pulse Width Modulation (PWM) for electrical heating
- 5 predefined heating profiles to select directly the used source
- Heavy duty version based on the Eaton Patented Hybrid long life high performance switching technology
- Integrated floor under/over heating protection in case a wireless floor temperature sensor is connected (only via MRF)
- Emergency mode in case of sensor or communication failure (Default 10%, can be adjusted by MRF)
- See real time the average power used to heat the room (SHC)
- Works standalone in combination with the 55mm Room controller touch

Heating plugs



Plug type:

- F-Type (Schuko)
- E-Type (Earthing pin)
- G-Type (British Standard)
- J-Type (S13)

Colors:

- 5 - Traffic white
- a - Grey

xComfort climate management solutions

Room Controller Touch



Typical applications are:

- Light control
- Climate control
- Blind & shutter control
- Safety management
- Energy monitoring & visualization
- Remote Information & control



RC-Touch fits a wide selection of 55x55 mm frames

Sensors

Different sensors are available to measure the climate condition in the rooms or outside. The sensor range includes dedicated sensors to just measure the temperature and/or humidity in a room and those which are combined with standalone control capabilities like the room controller touch. Furthermore, window/door contacts are available to prevent energy waste when doors/windows are open.

The room controller touch brings local control to your room. It can operate as a standalone control unit or together with the xComfort smart home controller to regulate the temperature in the room. It will help you to find the right balance in cost saving without losing comfort.



The surface-mounted xComfort door/window sensor is a universal solution for wireless door and window monitoring and the activation of smart home functions, such as controlling the lights and temperature inside your home. Save energy while increasing your comfort and personal safety!

The true universal PIR based universal motion sensor using the robust and proven Eaton xComfort technology enables Electricians with its modern design to offer smart motion-based solutions for energy saving, increased comfort and safety.



- Standard with indoor and outdoor temperature and humidity sensor
- Week program timer with six programmable switch points per day
- Floor temperature regulation (min and max) possible with external temperature sensor
- Up to 2 definable touch buttons for the direct control of lights and/or shutters
- Request status (heating, cooling, ventilation)
- Various information (settings, touch button, clock, low battery indication)
- Eaton reliable wireless communication

- Easy control via 2.2" touch display with backlight
- Up to 4 user programmable and easy selectable set point temperatures
- Fits with market standard 55x55 mm frames from leading wiring accessories brands
- No flush-box needed. To be placed at any desired location and on any surface
- Long battery (2 x AAA) life for typical use of 2 years and mains powered possible as alternative
- External wired temperature sensors possible
- Clear info always on display, without light emitting in standby, means a perfect solution in any room including bedrooms



xComfort climate management solutions Radiator Thermostat

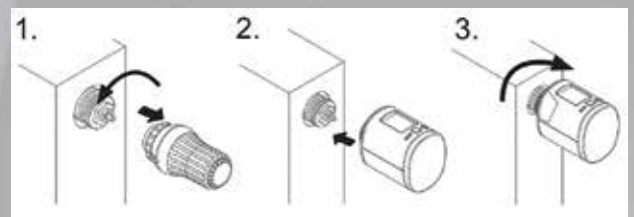


Typical applications are:

- Light control
- Climate control
- Blind & shutter control
- Safety management
- Energy monitoring & visualization
- Remote Information & control

- Battery powered
- Increase comfort
- Energy management
- Save energy
- For water-based radiators
- Standalone or with SHC
- Manage more radiators with RCT

- xComfort RF compatible, the step to a smart home
- Battery powered radiator thermostat to control water-based radiators with xComfort
- Uses common available AA batteries which can be replaced by the end-user.
- Large display and buttons for easy control
- Child lock/protection to prevent unwanted changes
- Designed to work with the SHC climate function, but can also work standalone.
- End-user changeable set point. Connected to SHC it will, after a defined period, automatically switch back to the in the SHC defined set point.
- Ideal for energy saving and increasing comfort
- Boost mode for quick heating
- Easy mounting on the radiator with various adapters available to support different radiator types/brands
- Window open detection (switch off heating in case of a temperature drop detection)



xComfort climate management solutions

Smart Home Controller



Typical applications are:

- Light control
- Climate control
- Blind & shutter control
- Safety management
- Energy monitoring & visualization
- Remote Information & control

Connected to the xComfort SHC, the room controller touch gives easy access via its touch display to the SHC climate control in the room in addition to the use of the smartphone. The SHC offers you the possibility to control the climate via the smartphone both at home and remotely.

The changes made with the room controller will be used in the climate function on the SHC and any change made in the climate on the SHC will be used in the Room Controller Touch, therefore it is the perfect combination to easily get insight in climate conditions in a room.



Central Operation



Local Management



Week Program



History

xComfort - Make your house smarter

You have full control over your house with your mobile phone. From anywhere. Anytime.

In our busy, modern lives we are often on the go. Whether travelling for work or away for summer holidays – you can quickly and simply reassure yourself that back at home, everything is as it should be.

to go



- In combination with the smart home controller control your smart home by smartphone locally or remotely.
- Smartphone App (iOS and Android) can be used

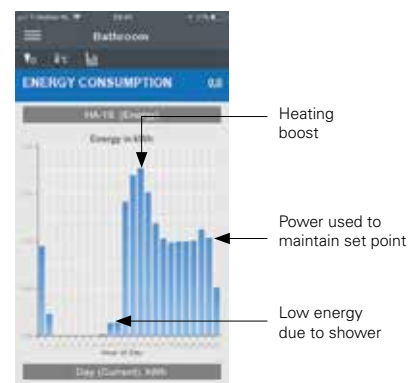
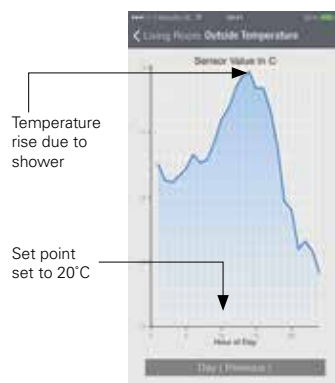
Features and Advantages:

- Brings unlimited additional functionality
- Design tailored to your style: tuning the climate control to individual needs
- Keep in control (lights, shading, heating, energy,...)
- Less power consumption and save energy
- Wireless control, no unsightly cables
- Remote control via smartphone or web
- Reliable and safe to operate
- Low initial costs and added value
- Flexibility: Easy to install and expand

Energy Management:

- **Central Operation:** easy and quick to control
- **Local Management:** offers you the possibility to control the climate at home or remotely in a secured way
- **Week Program:** predefine your own week program
- **History:** you can see the history of the temperature
- **Power Consumption:** see the average power consumption of the new heating actuators needed to heat a room. You can measure your power consumption point by point. Are you wasting electricity in the living room? In the kitchen? With the right information it's quite easy to save money.

Temperature vs. energy consumption in the bathroom



xComfort climate management solutions

Demonstrated future proof investment



Control units

The xComfort climate solutions include different types of control units applicable for each situation from direct radiator control and single room control up to multi individual zone climate control with light control etc. RF buttons for example located in the hall can easily be used when leaving and/or coming home to not only switch on or off the lights but also to put the climate control in the desired mode.

The valuable scalability of the xComfort has proven that investment once made can still be used when needs are changing and more sophisticated climate control functions are wished. For example, the heating actuator and/or room controller can be seamlessly integrated with the xComfort SHC climate and other smart home functions.

Typical applications are:

- Light control
- Climate control
- Blind & shutter control
- Safety management
- Energy monitoring & visualization
- Remote Information & control



Smartphone



Smart Home Controller (SHC)



Room Controller Touch (RCT)



Radiator Thermostat



Browser



Tablet



xComfort climate management solutions

Standalone solutions for heating



Floor heating package

If you want to control your water-based floor heating smoothly and uncomplicatedly, the best option is the preprogrammed floor heating package. With this complete package, 5 zones can be controlled completely automatically with the wireless room controller touch. In combination with the xComfort wireless system, further possibilities in terms of scalability, control and automation are opened up.

Predefined temperature set points

Mode	Temperature
Day	21°C
Eco	19°C
Night	18°C
Protection	10°C

Complete Wireless package for controlling water-based floor heating:

- Suitable for water-based floor heating
- Complete package for 5 zones
- Preprogrammed
- Easy to install
- Suitable for different heating group settings
- Wireless room controller touch can be placed on any surface
- Fits most 55x55 mm frames with different designs
- Easy scalable with additional zones and group settings

Predefined week-progress

Event Mode	Event 1 Day	Event 2 Eco	Event 3 Day	Event 4 Eco
Mo	05:00	08:00	14:00	23:00
Tu	05:00	08:00	14:00	23:00
We	05:00	08:00	14:00	23:00
Th	05:00	08:00	14:00	23:00
Fr	05:00	08:00	14:00	23:00
Sa	08:00	23:59		
Su	08:00	23:00		

Preconfigured channels:

Zone 1: 3 channels, Zone 2: 2 channels,
Zone 3-5: 1 channel, Zone: 4 channels

Easy to use spare channels in existing zones or for additional zones with room controller touch.



Go Wireless Heating Package

With the preprogrammed Go Wireless heating package, you can operate your heating solutions more conveniently. Whether heating panels, heating foil or heating cables, with the wireless room controller touch and the compact wireless heating actuator you take the first step towards more comfort in your four walls. And should the demands increase, the system can be expanded as required. This heating package can be installed quickly and easily without extensive reconstruction work, the RF room thermostat can be placed on any surface.

xComfort Climate Management Solutions Overview

Heating Actuator

Heating Actuator for efficient and smooth temperature control based on Pulse Width Modulation (PWM) for electrical heating.

	Art. No.
CHAU-01/01-10E 10A/230VAC	194372
CHAU-01/01-16E 16A/230VAC	194373
CHAU-01/01-1ES 1A/230VAC, Silent,	194374



Shutters/Blinds Actuator

RF receiver to control drives for shutters and blinds with 230 V motors featuring an integrated limit switch.

	Art. No.
CJAU-01/02 6 A / 230 VAC	240696



Switching Actuator 1 channel, potential-free

RF receiver for potential-free switching of power-consuming devices.

	Art. No.
CSAU-01/02 8 A / 230 VAC 8 A / 24 VDC	240694
CSAU-01/04 Push-button function Basic Mode	121080



RF-Adapters Heating Plug

With Multifunctional Button and EMS Multicolor status LED.

	Art. No.
CHAP-01/F5-12E 12A/230VAC, F-Type, Schuko	195176
CHAP-01/E5-12E 12A/230VAC, E-Type, Earthing pin	195177
CHAP-01/J5-12E 12A/230VAC, J-Type, S13	195179
CHAP-01/G5-12E 12A/230VAC, G-Type, BS	195178
CSAP-01/Fa-12E* Switching Plug Schuko 12A, EMS Grey (ABS)	195826
CDAP-01/Fa-12E* Dimming Plug Schuko 250W, EMS Grey (ABS)	195827
CHAP-01/Fa-12E* Heating Plug Schuko 12A, EMS Grey (ABS)	195828



Wireless Heating

Control any electric heater via the wireless Room Controller Touch, which can be mounted on any surface.

	Art. No.
CPAD-00/217 The package includes: 1 x Compact Heating actuator 1 x Room Controller Touch 55 mm (Battery included) 2 x Adhesive tape	193732



*Only Schuko plug types available.

Room Controller Touch

With temperature and humidity sensor to monitor and control the climate in a room either standalone or together with the SHC. Its touch display with backlight function offers an intuitive interface for daily use.

	Art. No.
CPAD-00/198 Pure white, gloss complete with frame	187712
CPAD-00/199 Jet black, matt complete with frame	195247
CRCA-00/08 Pure white, gloss	187708
CRCA-00/09 Anthracite	187709
CRCA-00/10 Traffic white, gloss	187710
CRCA-00/11 Alpine white, gloss	187711
CRCA-00/12 Signal white, gloss	193911
CRCA-00/13 Jet black matt	195246



Wireless Shading

Control any electric blinds, shutters or curtain (230 V) via this wireless switch, which can be mounted on any surface.

	Art. No.
CPAD-00/214 The package includes: 1 x Blinds actuator 1 x Wireless switch 55 mm (Battery included) 2 x Adhesive tape	193729



Wireless Floor Heating

Complete Wireless package for controlling floorheating

- Suitable for waterbased floorheating
- Complete package for 5 Zones
- Easy to install, comes preprogrammed

	Art. No.
CPAD-00/220 1 x Heating actuator, 12-way 5 x Room Controller Touch 55 mm 5 x Valve Drive 5 x Valve adapter M30x1,5 5 x Valve adapter M28x1,5 5 x Valve adapter Flange 23 mm 1 x Power cable	195899



Room Controller

Regulates and controls the heating and shading system. Temp. + Night-time reduction switch.

	Art. No.
CRCA-00/04	118781



Smart Home Controller

The Smart Home Controller is in charge of central management, it enables operation and display functions via smartphone apps or a web interface.

	Art. No.
CHCA-00/01 Smartphone is not included in delivery!	171230



Valve Drive 230V NC

The thermo-electrical heating valve is used for the control of radiators.

	Art. No.
CHVZ-01/04	179678



Adapters for Valve Drive

CMMZ-00/17 (Danfoss RA)	118866
CMMZ-00/18 (Baulco, SBK, Heimeier, Honeywell, etc.)	118867
CMMZ-00/38 (Tour & Andersson, Nereus Type 9440)	182452



Radiator Thermostat

Battery powered xComfort RF compatible Radiator Thermostat suitable to control water-based radiators automatically.

	Art. No.
CHVZ-01/05	195213



Adapters for Radiator Thermostat

CMMZ-00/41 Adapter Herz	195214
CMMZ-00/42 Adapter TA	195215
CMMZ-00/43 Adapter Comap	195216
CMMZ-00/44 Adapter Markaryds	195217



Room-Manager

Takes care of the room management and several central functions. Designed for central operation and display.

White	Art. No.
CRMA-00/03 Language: GB, NO, SE FI	118783
CRMA-00/04 Language: GB, NL, FR, DE,IT	118784
CRMA-00/05 Language: GB, RO, HU, PL, TR	118785
CRMA-00/06 Language: GB, DE,CZ, GR	118786



Heating Actuator 12 zones

It can control 230 V thermo-electric actuators and provides for up to 12 heating/cooling zones.

	Art. No.
CHAZ-01/12	164333
CKOZ-00/12 External RF receiver	164296



Door/Window Sensor

A wireless solution for monitoring doors and windows and activating smart home functions.

	Art. No.
CDWA-01/3a Warm white	300294
CDWA-01/3b Bright white	300295
CDWA-01/3c Grey	300296
CDWA-01/3d Brown	300297



Humidity Sensor - Outdoor with Temperature Sensor

0-10 VDC, Pt1000, measures the relative airmoisture 10-90% and forwards it as an analog 0-10 VDC value, analog input and 24V power supply

	Art. No.
CSEZ-01/17	109382



Living Room Enclosure

84.5 x 84.5 x 25 mm

	Art. No.
CSEZ-01/24	118802



Outdoor Enclosure

EB-Z/SE/01/03 50 x 65 x 37.5 mm	232284
---	---------------

Fit-to-Pipe Unit

EB-Z/SE/01/04 12 x 39 x 10.6 mm	232283
---	---------------



Temperature input

CTEU-02/01	265628
-------------------	---------------



Temperature sensors

CSEZ-01/01	265643
CSEZ-01/36	177263

Universal Motion Sensor

The sensor offers a universal solution to sense movement in a room and to control the lights and climate in the house.

	Art. No.
CBMD-02/01 Pure white	300918
CBMD-02/02 Jet black	300919



Eaton is a power management company with 2017 sales of \$20.4 billion. We provide energy-efficient solutions that help our customers effectively manage electrical, hydraulic and mechanical power more efficiently, safely and sustainably. Eaton is dedicated to improving the quality of life and the environment through the use of power management technologies and services. Eaton has approximately 96,000 employees and sells products to customers in more than 175 countries.

For more information, visit Eaton.com.



Eaton Industries (Austria) GmbH
Scheydgasse 42
1210 Vienna
Austria

Eaton
EMEA Headquarters
Route de la Longeraie 7
1110 Morges, Switzerland
Eaton.eu

© 2019 Eaton
All Rights Reserved
Printed in Austria
Publication No. BR005009EN
Article number 191240-MK
November 2019
Graphics: SRA, Schrems

Changes to the products, to the information contained in this document, and to prices are reserved; so are errors and omissions. Only order confirmations and technical documentation by Eaton is binding. Photos and pictures also do not warrant a specific layout or functionality. Their use in whatever form is subject to prior approval by Eaton. The same applies to Trademarks (especially Eaton, Moeller, and Cutler-Hammer). The Terms and Conditions of Eaton apply, as referenced on Eaton Internet pages and Eaton order confirmations.

Eaton is a registered trademark.

All other trademarks are property of their respective owners.

Follow us on social media to get the latest product and support information.

