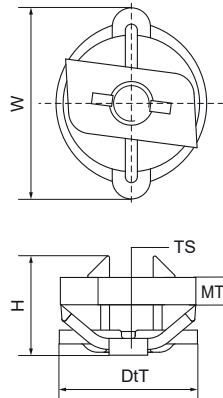


## Walraven RapidRail® Stainless Steel Slide Nut

(M2905)

for quick connection of clamps



### Features & benefits

- slide nut with washer and Walraven RapidRail® spring
- ready-to-use pre-assembled for a quick fixing, and retains assembly in place before final tightening
- material: metal parts made of stainless steel 1.4401 (AISI 316); spring(s) made of POM (polyoxymethylene), blue



Product Number	VVS Number	For Rail Type	Thread Size	Material Thickness	Torque Moment For Installation	Maximum Allowed Load Faz	Total Height	Total Width	Total Depth
Reference letter			TS	MT	T <sub>inst.</sub>	F <sub>0,z</sub>	H	W	DtT
Unit description				mm	Nm	N	mm	mm	mm
6517306		30x15, 30x20, 30x30	M6	4.00	7.5	2,000	17.13	27.55	35
6517308	018043448	30x15, 30x20, 30x30	M8	5.00	10	2,700	18.35	27.55	35
6517310	018043450	30x15, 30x20, 30x30	M10	5.00	10	2,900	18.47	27.55	35