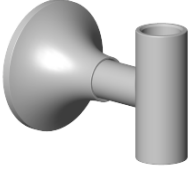








**Holder 60 x 60 x 83 mm - Brushed Champagne (22kt Gold)**

SPARE PARTS

90 17 11 148 00



	Brushed Champagne (22kt Gold)	90 17 11 148 00-46
	Chrome	90 17 11 148 00-00
	Brushed Platinum	90 17 11 148 00-06
	Platinum	90 17 11 148 00-08
	Dark Chrome	90 17 11 148 00-19
	Brushed Light Gold (PVD)	90 17 11 148 00-27
	Brushed Durabrass (23kt Gold)	90 17 11 148 00-28
	Champagne (22kt Gold)	90 17 11 148 00-47
	Brushed Dark Platinum	90 17 11 148 00-99



Holder 60 x 60 x 83 mm - Brushed Champagne (22kt Gold)

SPARE PARTS

90 17 11 148 00



Holder 60 x 60 x 83 mm - Brushed Champagne (22kt Gold)

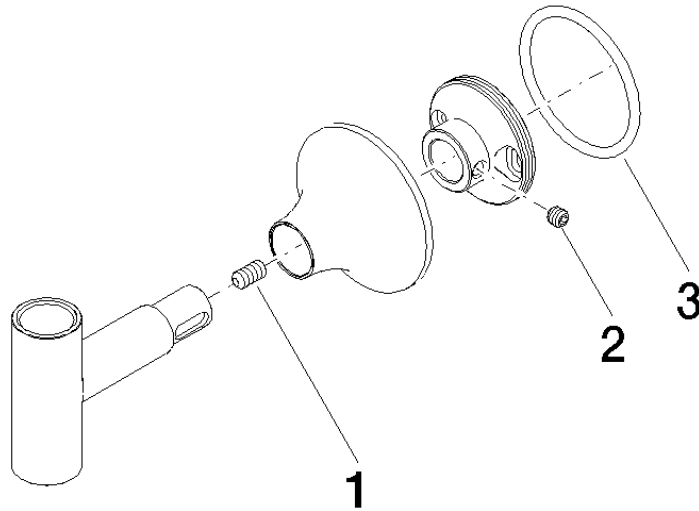
SPARE PARTS

---

90 17 11 148 00

90 17 11 148 00

Parts for other finishes can be found here: [Chrome](#)



### Spare parts list

No.	Item Number	Name	Quantity used	Delivery time
1	09 31 11 211 90	Mounting Threaded pin with hexagon socket with cup point M6 x 12 mm -	1.00	14
3	09 14 10 084 90	O-Ring EPDM 70 48 x 3,5 mm -	1.00	14
2	09 31 11 049 90	Mounting Threaded pin with hexagon socket with cup point M6 x 6 mm -	1.00	14