

Finishing set for mechanically controlled ventilation control, piano black coated

200-61106

CE

4 year warranty

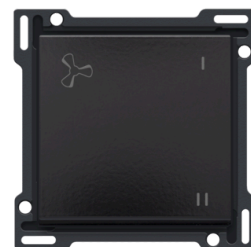
Finishing set featuring 1 key with a ventilation icon symbol. This key is used for the control of mechanically controlled ventilation. Colour: piano black coated.

Technical data

Finishing set for mechanically controlled ventilation control, piano black coated.

This central plate is surrounded with a flat edge that is equipped at all 4 corners with a rectangular opening, each containing a multi-positional snap hook. The construction of the central plate ensures that the faceplate can always be attached flat to the wall, even in cases of untidy plasterwork. This works in two directions: If the flush-mounting box sticks out of the plasterwork, the multi-positional snap hooks can compensate for a 1 to 1.2 mm margin; if the flush-mounting box is sunk too deeply in the plasterwork, the snap hooks can compensate for up to a 1.8 mm margin. The flat edge around the central plate also has 4 round openings that ensure the correct positioning of the faceplate in relation to the central plate. After mounting all components (faceplate, finishing set and switch), no metal parts are visible thanks to the flat edge of the central plate.

- Number of buttons: 1
- Material finishing: polycarbonate (PC) + acrylic-styrene-acrylate (ASA)
- Type of control: switch
- Colour: piano black coated
- Colour RAL (approximately): 9005
- Colour NCS (approximately): NCS S 9000-N
- Surface treatment: coated
- Imprint indication: the key on the central plate is indelibly imprinted with the ventilation symbol
- Number of lenses: 0
- Dismantling method: insert a slotted screwdriver in one of the two notches in the flat edge of the central plate (marked with a screwdriver symbol) to lift the central plate up
- Minimum ambient temperature: 5 °C
- Maximum ambient temperature: 40 °C
- Protection degree: IP41 for the combination of a mechanism, central plate and faceplate



- Impact resistance: the combination of a mechanism, a central plate and a faceplate has an impact-resistance of IK06
- Fire safety:
 - all plastic components are self-extinguishing (comply with a filament test of 650°C)
 - all plastic components are halogen-free
- Dimensions of finishing with flat edge: 56 x 56 mm (HxW), dimensions of visible area of finishing: 45 x 45 mm (HxW)
- Dimensions (HxWxD): 55.8 mm x 55.8 mm x 10.5 mm
- Marking: CE