

Safety shut-off ball valve for gas with steel T-handle

Data sheet for
2302
Issue 1107

HTB 925°C, 60 min

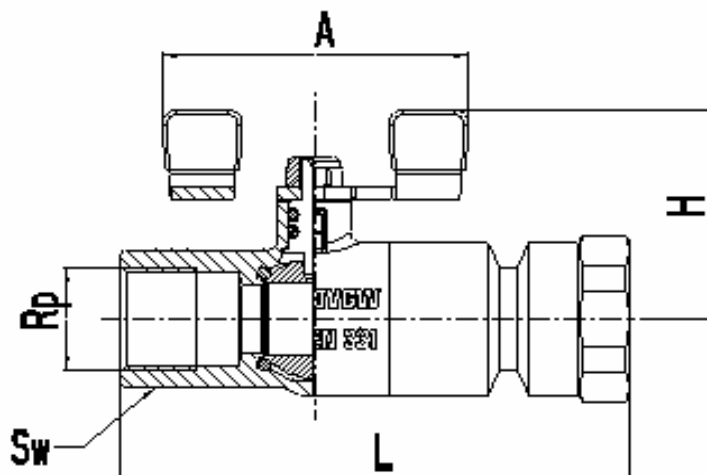
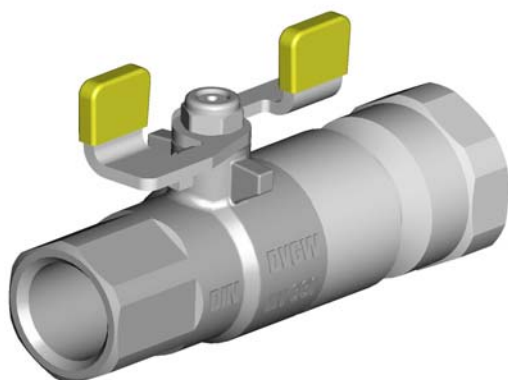


Figure	MOP	PN	DN	Rp	L	H	A	Mt(Nm)	Sw	Dimensions (mm)
1 2302 11	5	1	15	1/2"	98	45	60	75	26	
1 2302 12	5	1	20	3/4"	107	49	60	100	32	
1 2302 13	5	1	25	1"	133	61	85	125	41	

Body: forged brass acc. EN 12165, Ni plated

Connection: steel, Ni plated

Ball: pressed brass, full bore, machined to a microsmooth finish, chrome plated

Spindle: brass

T-handle: steel with plastic cover

Connections: Female thread acc. Rp ISO 7-1 (DIN 2999, BS21)

Sealing elements: NBR 80 ShA ball and NBR 70 ShA spindle

Design

Working pressure: Depends on dimension (bar), for gas MOP5 (EN331), PN1(HTB 925°C, 60 min)

Working temperature: -20 °C up to 60°C

Activation temperature: 85°C up to 115°C

Suitable for: 1., 2., 3. gas family from EN 437 (gas family acc.DVGW-table G260/I)

Operating data

The ball valve is used in gas installations according to DVGW-TRGI with use gases acc. to table G260/I as open-closed element. It's used in the central gas heating systems, water heaters in front of the end users. We use it in all places where we expect durability even if we exceed working conditions. In case of fire the valve shut-off automatically. Safety shut off Ball valve automatically shuts off the gas flow at room temperature between 85 °C and to 115°C. In case of fire the valve needs to be closed. By the increased temperature the seals burn away. In that case the seal element is the connection between the ball and the body. By increased temperature of 925°C the brass itself seals for min. 60 minutes (fire means min.response time). The ball valve is used as protective element in gas installations.

Application

We can use spinning material, teflon ribbon, sealing paste to seal the connection between the gas installation pipe and ball valve. Screw pipe end into ball valve with suitable assembly tool (Sw) not to exceed the maximum torque moment (Mt). The gas flow in installations must have the same directions as arrow on the body. Ball valve with thermally released Shut off device must be mounted before fire non resistant elements (heaters, gas meters, rubber hoses,...). We recommended to use Ball valve in fully open or closed, not in mid position. At least twice per year exercise the valve. Ball valve doesn't need special maintenance. At least twice per year exercise the valve.

Instruction for assembly and maintenance

We reserve the right to make modifications in line with progress in engineering.



Kovinsko predelovalno podjetje d.d.
Grmaška c.3, 1275 Šmartno pri Litiji, SLOVENIJA