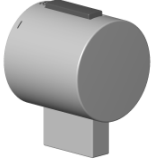
















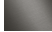


90 17 33 019 00 Product version from 4/1/2025



	Brushed Platinum	90 17 33 019 00-06
	Chrome	90 17 33 019 00-00
	Platinum	90 17 33 019 00-08
	Durabronze (23kt Gold)	90 17 33 019 00-09
	Matte White	90 17 33 019 00-10
	Dark Chrome	90 17 33 019 00-19
	Brushed Dark Chrome	90 17 33 019 00-20
	Light Gold (PVD)	90 17 33 019 00-26
	Brushed Light Gold (PVD)	90 17 33 019 00-27
	Brushed Durabronze (23kt Gold)	90 17 33 019 00-28
	Matte Black	90 17 33 019 00-33
	Brushed Dark Brass (PVD)	90 17 33 019 00-39
	Brushed Bronze (PVD)	90 17 33 019 00-42
	Brushed Champagne (22kt Gold)	90 17 33 019 00-46
	Champagne (22kt Gold)	90 17 33 019 00-47
	Brushed Chrome	90 17 33 019 00-93
	Brushed Dark Platinum	90 17 33 019 00-99



Handle Thermostat Ø48mm - Brushed Platinum

SPARE PARTS

90 17 33 019 00 Product version from 4/1/2025



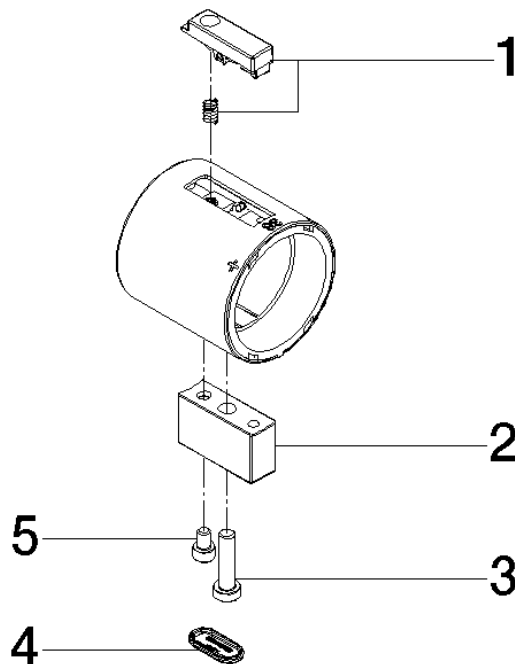
Handle Thermostat Ø48mm - Brushed Platinum

SPARE PARTS

90 17 33 019 00 Product version from 4/1/2025

90 17 33 019 00 Product version from 4/1/2025

Parts for other finishes can be found here: [Chrome](#)



Spare parts list

No.	Item Number	Name	Quantity used	Delivery time
1	90 21 33 011 00-13	Repair kit for thermostat handle - black	1.00	14
3	90 30 30 140 00 90	Bolt M5 x 20 mm -	1.00	14
5	09 30 30 031 90	Mounting Cylinder head screw with hexagon socket M4 x 6 mm -	1.00	14
2	90 17 33 019 01-06	Handle 11 x 11 x 20 mm - Brushed Platinum	1.00	20
4	90 31 20 132 00 90	Oblong hole plug 20 x 9,1 x 2,5 mm -	1.00	14