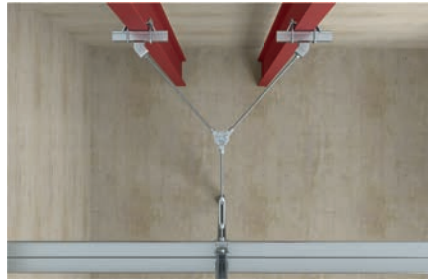
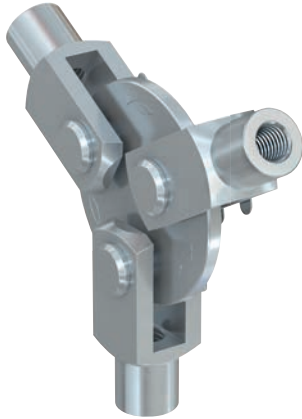
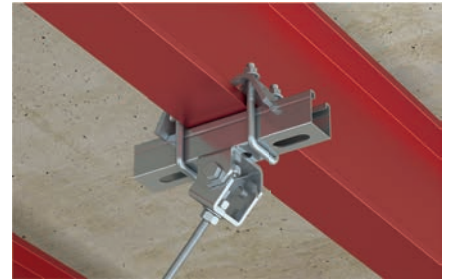


Bracing element FYJB

Variable bracing element FYJB for bracing and suspending installation grids made of FUS channel profiles



Installation grid with FYJB



Connection to steel beam

4

Applications

- Variable bracing element for bracing installation grids made of FUS channel profiles to the steel structure.
- For use with M12 threaded rods.
- For use in dry interior areas.

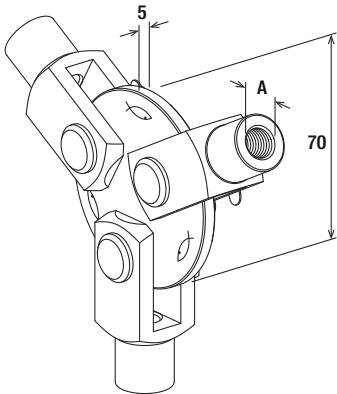
Advantages

- The design of the FYJB bracing element allows bracing at any angle using ordinary threaded rods.
- In conjunction with the SPS turnbuckle, the FYJB bracing element enables height adjustment and thus an easy way to align FUS channel systems, especially installation grids, horizontally.
- High stability thanks to robust construction to accommodate high loads.
- Optimal addition to our cross connectors FVS for setting up an installation grid in production halls, warehouses or comparable buildings.

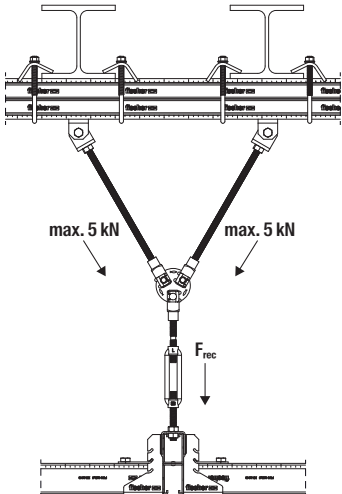
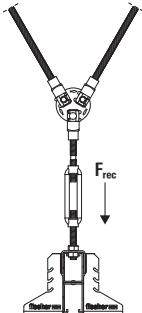
Properties

- Material round plate and bolt: steel S235JR (material no. 1.0038)
- Material clevises: steel 11SMnPb30+C (material no. 1.0718)
- Material pin lock: spring steel
- Zinc plating: electro zinc-plated

4



FYJB



Technical data

		Thread	Max. recom. load FYJB	Max. recom. load FYJB with FUH13, TKR 82, and FUS 62 profile	Sales unit
	Item no.	A	F_{rec} [kN]	F_{rec} [kN]	[pcs]
Item					
FYJB M12	569185	M12	13	10	10