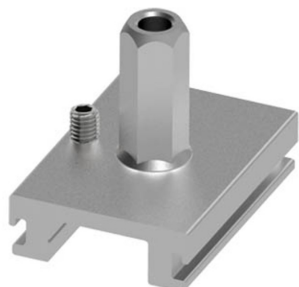


# Concord

LYTESPAN H-TR SH M6 BRACKT+GRIPPER S-9000/112-M6-H  
2070377



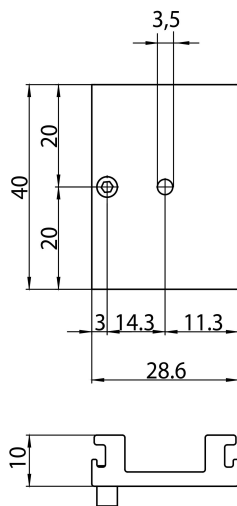
## Features

- Lytespan H-Track accessory. Short pendant bracket with M6 gripper, in aluminum. Silver. Compatible with Lytespan H-Track only.

## Product Overview

Product name	LYTESPAN H-TR SH M6 BRACKT+GRIPPER S-9000/112-M6-H
Technology	Accessory
Housing	Aluminium
Mount	Suspended
General application	Museums & Galleries, Office, Hospitality
ETIM Class	EC002557
Housing colour	Silver
Product EAN number	5025768703777
Warranty	5 years

### Technical drawings



### Data table

#### GENERAL DATA

<b>Product name</b>	LYTESPAN H-TR SH M6 BRACKT+GRIPPER S-9000/112-M6-H
<b>Technology</b>	Accessory
<b>Accessory type</b>	Mounting
<b>Type of accessory</b>	Pendant bracket
<b>Housing</b>	Aluminium
<b>Mount</b>	Suspended
<b>General application</b>	Museums & Galleries, Office, Hospitality
<b>ETIM Class</b>	EC002557
<b>Warranty</b>	5 years

# Concord

## LYTESPAN H-TR SH M6 BRACKT+GRIPPER S-9000/112-M6-H 2070377

### ELECTRICAL DATA

Control gear required	No
-----------------------	----

### PHYSICAL DATA

Housing colour	Silver
----------------	--------

Nominal Product Length (mm)	40
-----------------------------	----

Nominal Product Width (mm)	28.6
----------------------------	------

Nominal Product Height (mm)	32
-----------------------------	----

Weight (kg)	0.3
-------------	-----

### PACKAGING

Product EAN number	5025768703777
--------------------	---------------

Packaging single length / height (cm)	16.0
---------------------------------------	------

Packaging single width (cm)	16.0
-----------------------------	------

Packaging single depth (cm)	4.0
-----------------------------	-----

DUN14 (outer)	05025768703777
---------------	----------------

Units per outer package	20
-------------------------	----

Packaging outer length / height (cm)	16.0
--------------------------------------	------

Packaging outer width (cm)	16.0
----------------------------	------

Packaging outer depth (cm)	4.0
----------------------------	-----

### SAFETY DATA

Special purpose lamp	No
----------------------	----

Dry applications use only	No
---------------------------	----

Suitable for household illumination	No
-------------------------------------	----