

Concord

LYTESPAN RND BRACKET+M6GRIPPER WH S-9500/314-M6-W2
2070363



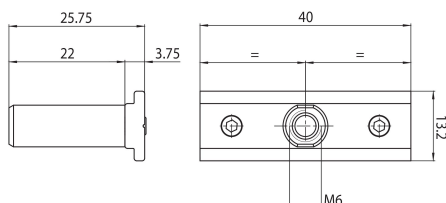
Features

- Lytespan Round Track accessory. Short pendant bracket for suspensions with M6 gripper. White. Compatible with Lytespan Round Track only.

Product Overview

Product name	LYTESPAN RND BRACKET+M6GRIPPER WH S-9500/314-M6-W2
Technology	Accessory
Housing	Aluminium
Mount	Suspended
General application	Hospitality, Museums & Galleries, Office
ETIM Class	EC002557
Housing colour	White
Product EAN number	5025768703630
Warranty	5 years

Technical drawings



Concord

LYTESPAN RND BRACKET+M6GRIPPER WH S-9500/314-M6-W2 2070363

Data table

GENERAL DATA

Product name	LYTESPAN RND BRACKET+M6GRIPPER WH S-9500/314-M6-W2
Technology	Accessory
Accessory type	Mounting
Type of accessory	Pendant bracket
Housing	Aluminium
Mount	Suspended
General application	Hospitality, Museums & Galleries, Office
ETIM Class	EC002557
Warranty	5 years

ELECTRICAL DATA

Control gear required	No
-----------------------	----

PHYSICAL DATA

Housing colour	White
Nominal Product Length (mm)	40
Nominal Product Width (mm)	13.2
Nominal Product Height (mm)	22
Weight (kg)	0.3

PACKAGING

Product EAN number	5025768703630
Packaging single length / height (cm)	16.0
Packaging single width (cm)	16.0
Packaging single depth (cm)	4.0
DUN14 (outer)	05025768703630
Units per outer package	1
Packaging outer length / height (cm)	16.0

Concord

LYTESPAN RND BRACKET+M6GRIPPER WH S-9500/314-M6-W2 2070363

Packaging outer width (cm)	16.0
Packaging outer depth (cm)	4.0

SAFETY DATA

Special purpose lamp	No
Dry applications use only	No
Suitable for household illumination	No