

# Concord

## LYTESPAN ROUND TRACK GROOVED PIN S-9000/SIP-3X30 2070344



### Features

- Lytespan Round Track accessory, grooved pin for linear joint. Steel.



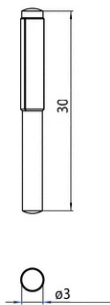
### Product Overview

|                     |  |
|---------------------|--|
| Product name        | LYTESPAN ROUND TRACK GROOVED PIN S-9000/<br>SIP-3X30 |
| Technology          | Accessory  |
| Housing             | Steel  |
| Mount               | Track mounting                                       |
| General application | Hospitality, Museums & Galleries, Office             |
| ETIM Class          | EC002557   |
| Housing colour      | Aluminium  |
| Product EAN number  | 5025768703449  |
| Warranty            | 5 years  |

# Concord

## LYTESPAN ROUND TRACK GROOVED PIN S-9000/SIP-3X30 2070344

### Technical drawings



### Data table

#### GENERAL DATA

|                     |  |
|---------------------|--|
| Product name        | LYTESPAN ROUND TRACK GROOVED PIN S-9000/SIP-3X30 |
| Technology          | Accessory  |
| Accessory type      | Mounting   |
| Type of accessory   | Linear joint/Junction                            |
| Housing             | Steel  |
| Mount               | Track mounting                                   |
| General application | Hospitality, Museums & Galleries, Office         |
| ETIM Class          | EC002557   |
| Warranty            | 5 years  |

#### ELECTRICAL DATA

|                       |    |
|-----------------------|----|
| Control gear required | No |
|-----------------------|----|

#### PHYSICAL DATA

# Concord

## LYTESPAN ROUND TRACK GROOVED PIN S-9000/SIP-3X30 2070344

|                               |           |
|-------------------------------|-----------|
| Housing colour                | Aluminium |
| Nominal Product Height (mm)   | 30        |
| Nominal Product Diameter (mm) | 3         |
| Weight (kg)                   | 0.5       |

### PACKAGING

|                                       |                |
|---------------------------------------|----------------|
| Product EAN number                    | 5025768703449  |
| Packaging single length / height (cm) | 16.0           |
| Packaging single width (cm)           | 16.0           |
| Packaging single depth (cm)           | 4.0            |
| DUN14 (outer)                         | 05025768703449 |
| Units per outer package               | 200            |
| Packaging outer length / height (cm)  | 16.0           |
| Packaging outer width (cm)            | 16.0           |
| Packaging outer depth (cm)            | 4.0            |

### SAFETY DATA

|                                     |    |
|-------------------------------------|----|
| Special purpose lamp                | No |
| Dry applications use only           | No |
| Suitable for household illumination | No |