

## 10 x 85 mm 1500 V d.c. Photovoltaic fuse links



Ceramic fuse body



Melamine fuse body

### Product description

Eaton's Bussmann® series 10 x 85 mm fuse links are specifically designed to protect photovoltaic strings.

### Features

- Compatible with Eaton's Bussmann series CHPV15H85 fuse holder (see data sheet [TD135010EN](#)).
- IEC and UL Accreditations

**Catalogue symbol**

- PV-(Amps)A10F85L for example PV-15A10F85L

**Technical data**

- Rated voltage: 1500 V d.c.
- Rated current: 2.25, 2.5, 3, 3.5, 4, 5, 12, 15, 16, 20, 25 and 30 A
- Breaking capacity: 30 kA d.c. 1 ms
- Class of operation: gPV
- Fuse body material
  - 2.25 A to 5 A: Ceramic
  - 12 A to 30 A: Melamine

**Standards/Approvals**

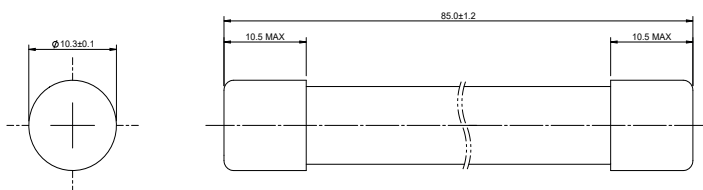
- IEC 60269
- UL 248-19
- RoHS compliant

**Packaging**

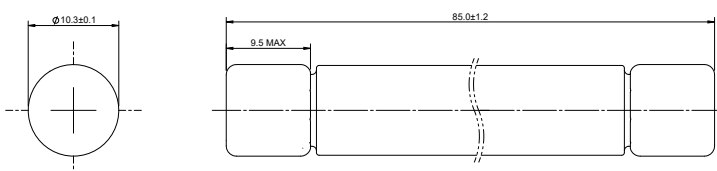
- MOQ: 10

Catalogue numbers	Rated current (A)	Rated voltage (V d.c.)	Energy integrals I <sup>2</sup> t (A <sup>2</sup> s)		Watts loss (W)		Compatible fuse holder
			Pre-arcing	Total at 1500 V d.c.	0.8 I <sub>n</sub>	I <sub>n</sub>	
PV-2.25A10F85L	2.25	1500	3	10	1.4	2.4	<a href="#">CHPV15H85</a>
PV-2.5A10F85L	2.5	1500	4	10	1.3	2.1	<a href="#">CHPV15H85</a>
PV-3A10F85L	3	1500	7	20	1.3	2.2	<a href="#">CHPV15H85</a>
PV-3.5A10F85L	3.5	1500	10	20	1.6	2.6	<a href="#">CHPV15H85</a>
PV-4A10F85L	4	1500	15	30	1.7	2.8	<a href="#">CHPV15H85</a>
PV-5A10F85L	5	1500	33	60	1.7	2.8	<a href="#">CHPV15H85</a>
PV-12A10F85L	12	1500	19	240	2.1	3.5	<a href="#">CHPV15H85</a>
PV-15A10F85L	15	1500	42	300	2.2	3.6	<a href="#">CHPV15H85</a>
PV-16A10F85L	16	1500	48	350	2.1	3.5	<a href="#">CHPV15H85</a>
PV-20A10F85L	20	1500	108	800	2.7	4.5	<a href="#">CHPV15H85</a>
PV-25A10F85L	25	1500	190	1400	3.4	5.6	<a href="#">CHPV15H85</a>
PV-30A10F85L	30	1500	485	3500	4	6.6	<a href="#">CHPV15H85</a>

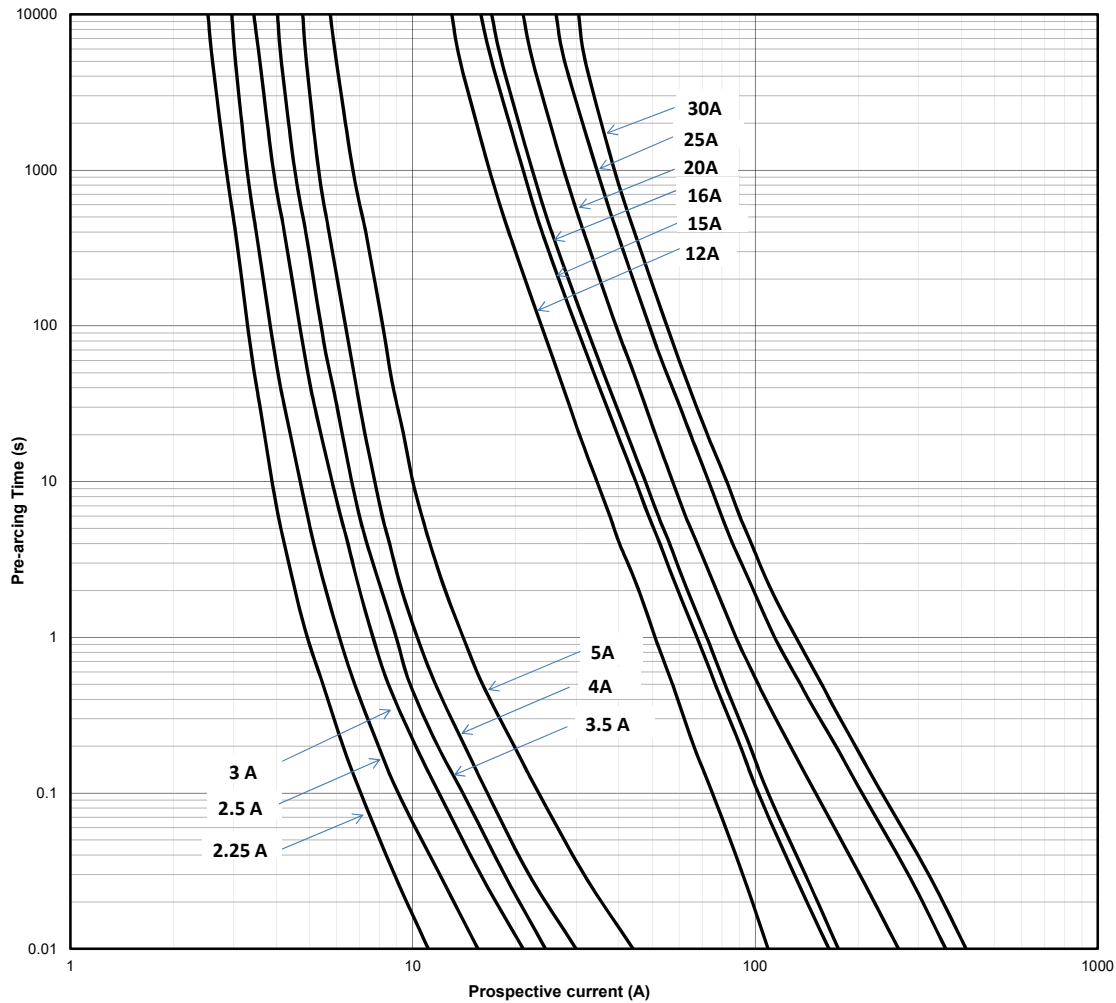
**Dimensions (mm) - 2.25 A to 5 A (Ceramic fuse body)**



**Dimensions (mm) - 12 A to 30 A (Melamine fuse body)**



**Time-current curve**



Changes to the products, to the information contained in this document, and to prices are reserved; so are errors and omissions. Only order confirmations and technical documentation by Eaton is binding. Photos and pictures also do not warrant a specific layout or functionality. Their use in whatever form is subject to prior approval by Eaton. The same applies to Trademarks (especially Eaton, Moeller, and Cutler-Hammer). The Terms and Conditions of Eaton apply, as referenced on Eaton Internet pages and Eaton order confirmations.

**Eaton Electrical Products Limited**  
 Unit 1, Hawker Business Park  
 Melton Road  
 Burton-on-the-Wolds  
 LE12 5TH  
 United Kingdom  
 www.eaton.com

© 2018 Eaton  
 All Rights Reserved  
 PDF Only  
 Publication No. 10658  
 November 2025