

**fischer** 

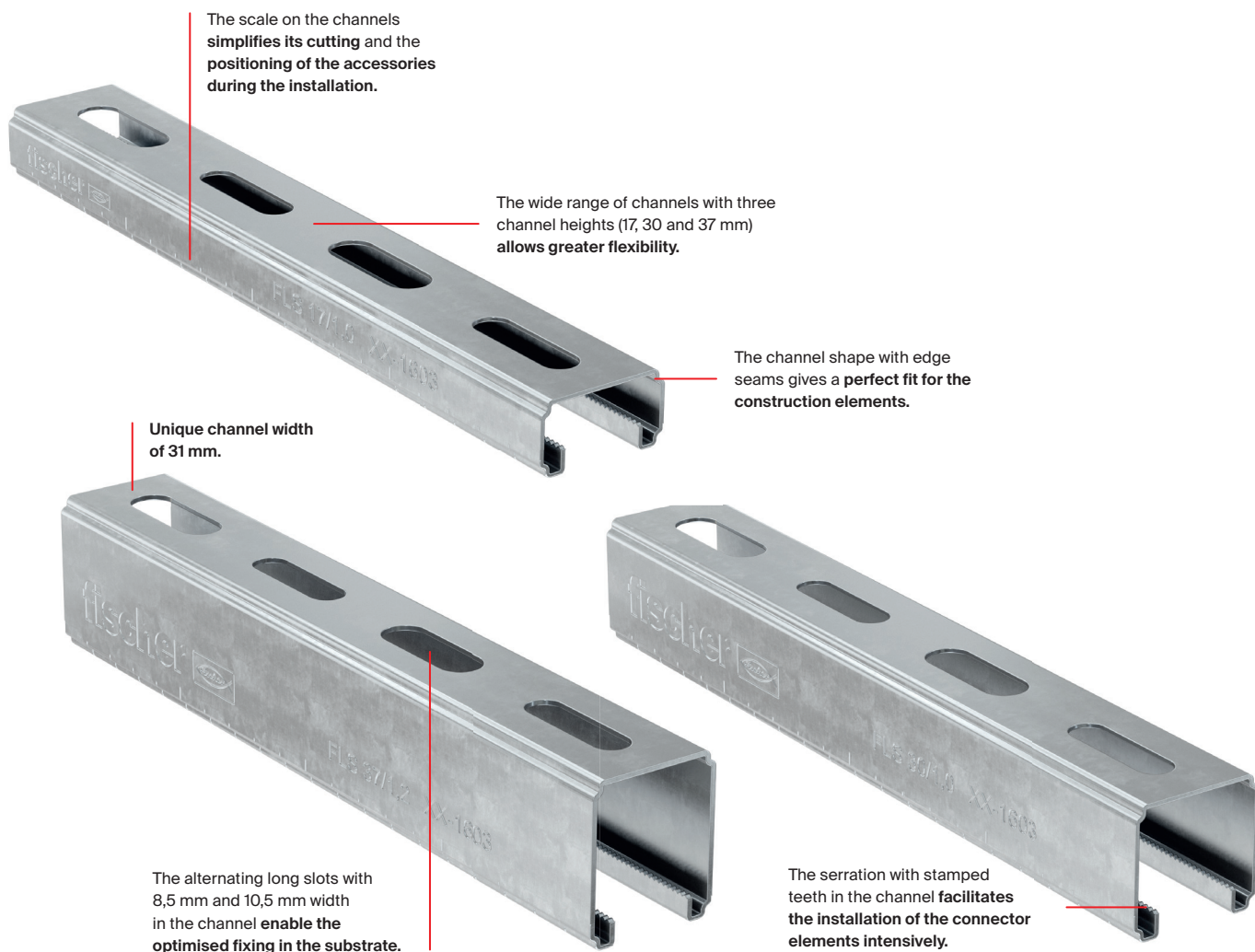
## Light channel system FLS.





# Light channel system FLS. Easy and stable.

## Installation channel FLS

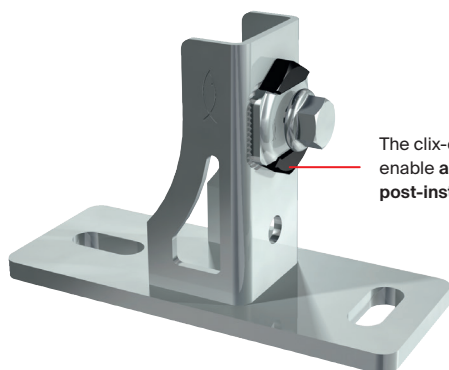


## Approval



Applies only to FLS 37 and ALK 37

## Saddle flange SF Clix 31 und Angle bracket MW Clix 90°



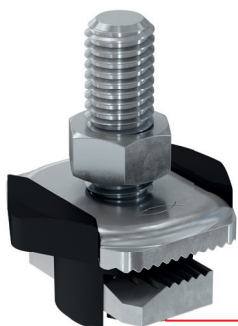
The clix-elements with 90°-rotation enable a **simple and time-saving post-installation** in set channels.



The pre-assembled accessories guarantee a **time-saving and easy installation** due to the reduced number of articles.

The unique thrust block guarantees a **secure installation position**.

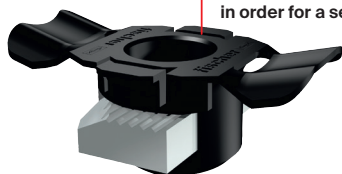
## Connection elements



The special spring leg on the clix-elements ensures the required pressure in the channel for a **simple adjustment of the element**.



The unique stop element on the clix-elements **facilitates the precise and error-free 90°-rotation** in the channel.

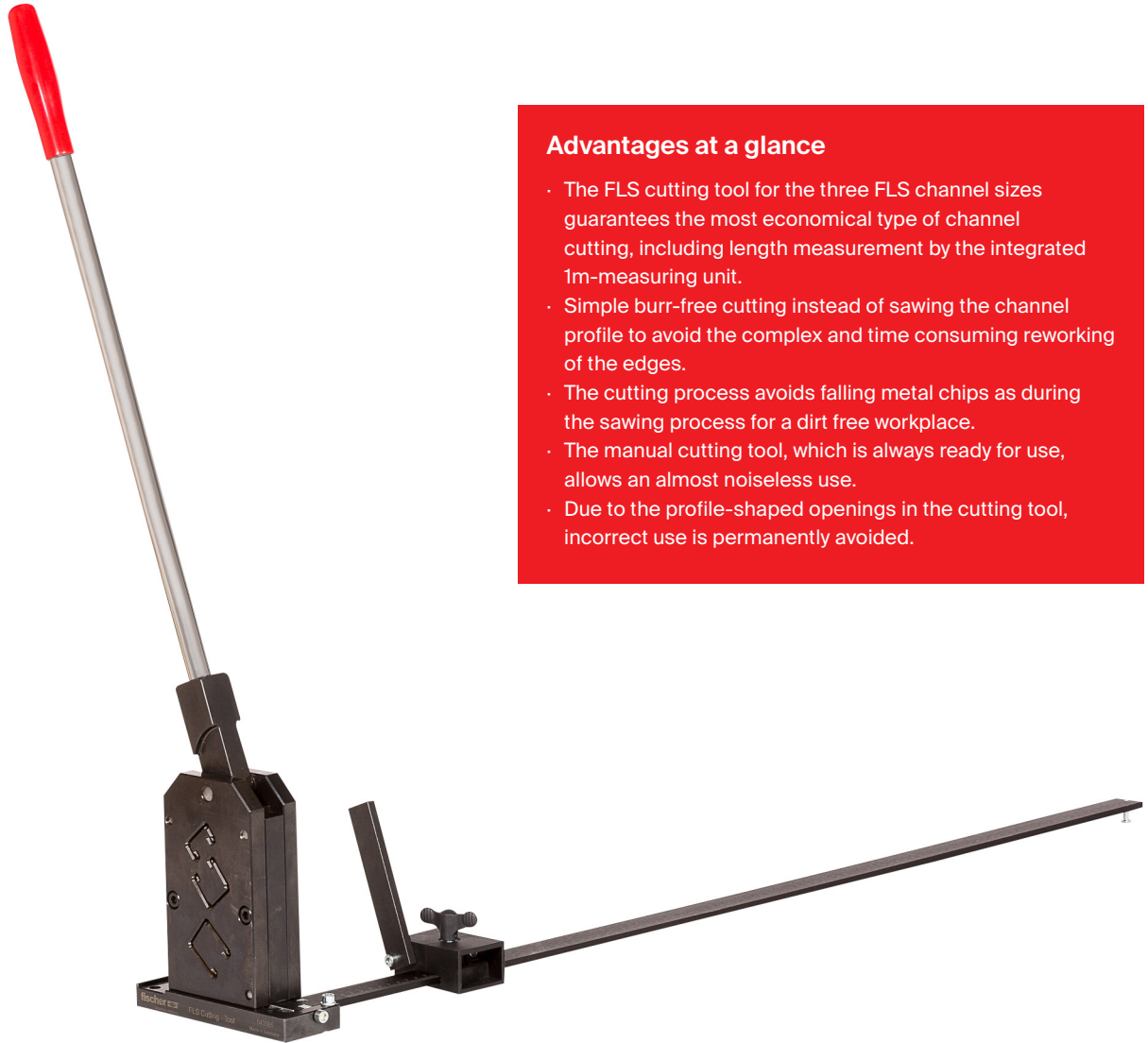


The unique and disappearing thrust block on the plastic holder of the sliding nut Clix P guarantees a **connection without plastic insert** in order for a **secure metallic connection**.



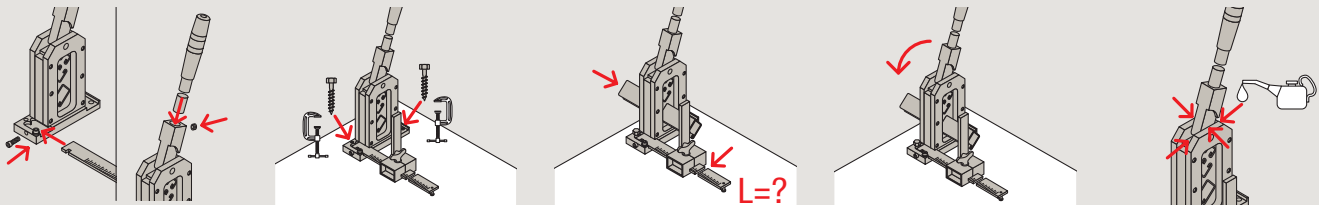
The characteristic retaining brackets on the connector elements guarantee the **formfitting installation** in the channel.

# FLS Cutting Tool



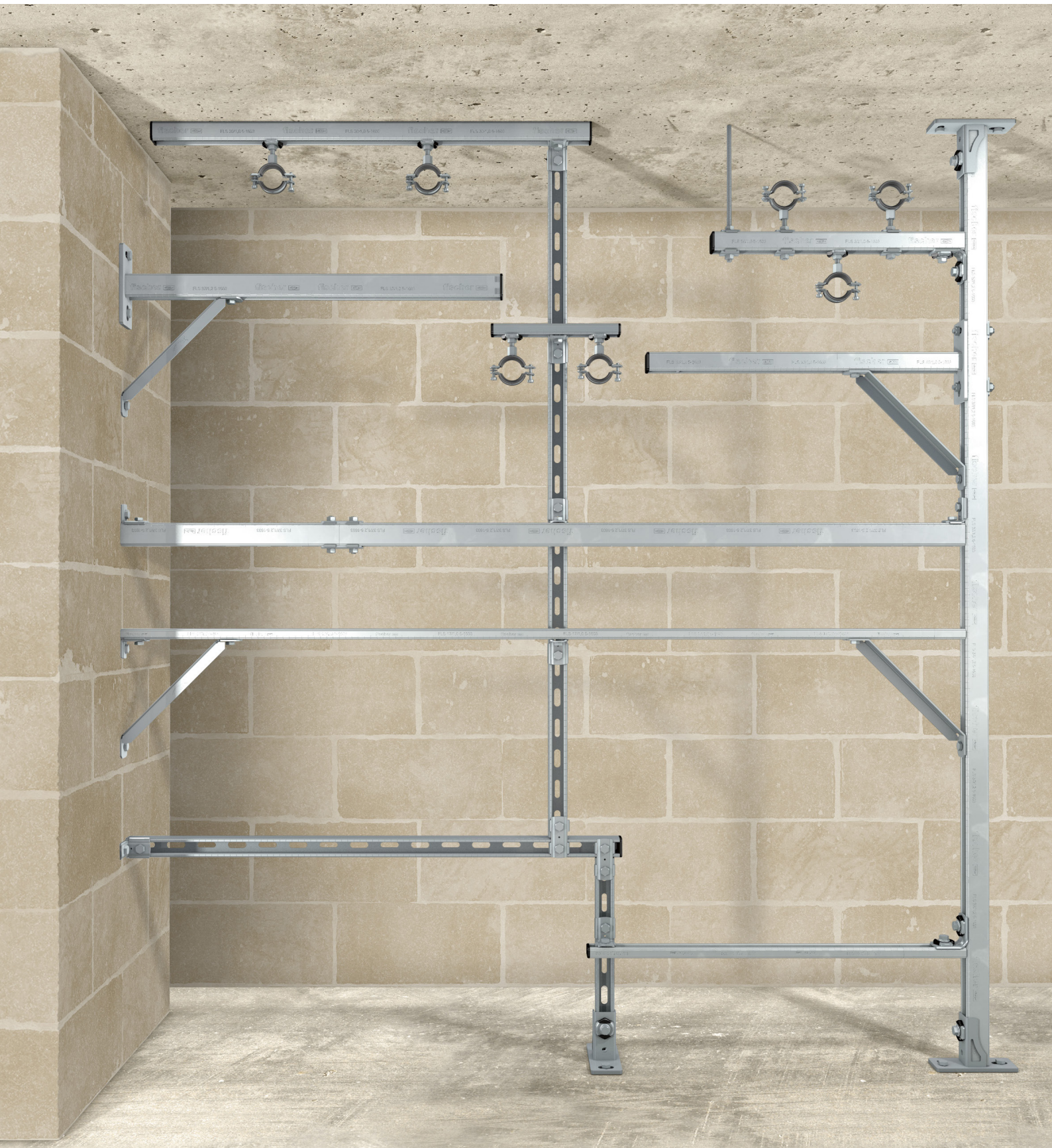
## Advantages at a glance

- The FLS cutting tool for the three FLS channel sizes guarantees the most economical type of channel cutting, including length measurement by the integrated 1m-measuring unit.
- Simple burr-free cutting instead of sawing the channel profile to avoid the complex and time consuming reworking of the edges.
- The cutting process avoids falling metal chips as during the sawing process for a dirt free workplace.
- The manual cutting tool, which is always ready for use, allows an almost noiseless use.
- Due to the profile-shaped openings in the cutting tool, incorrect use is permanently avoided.



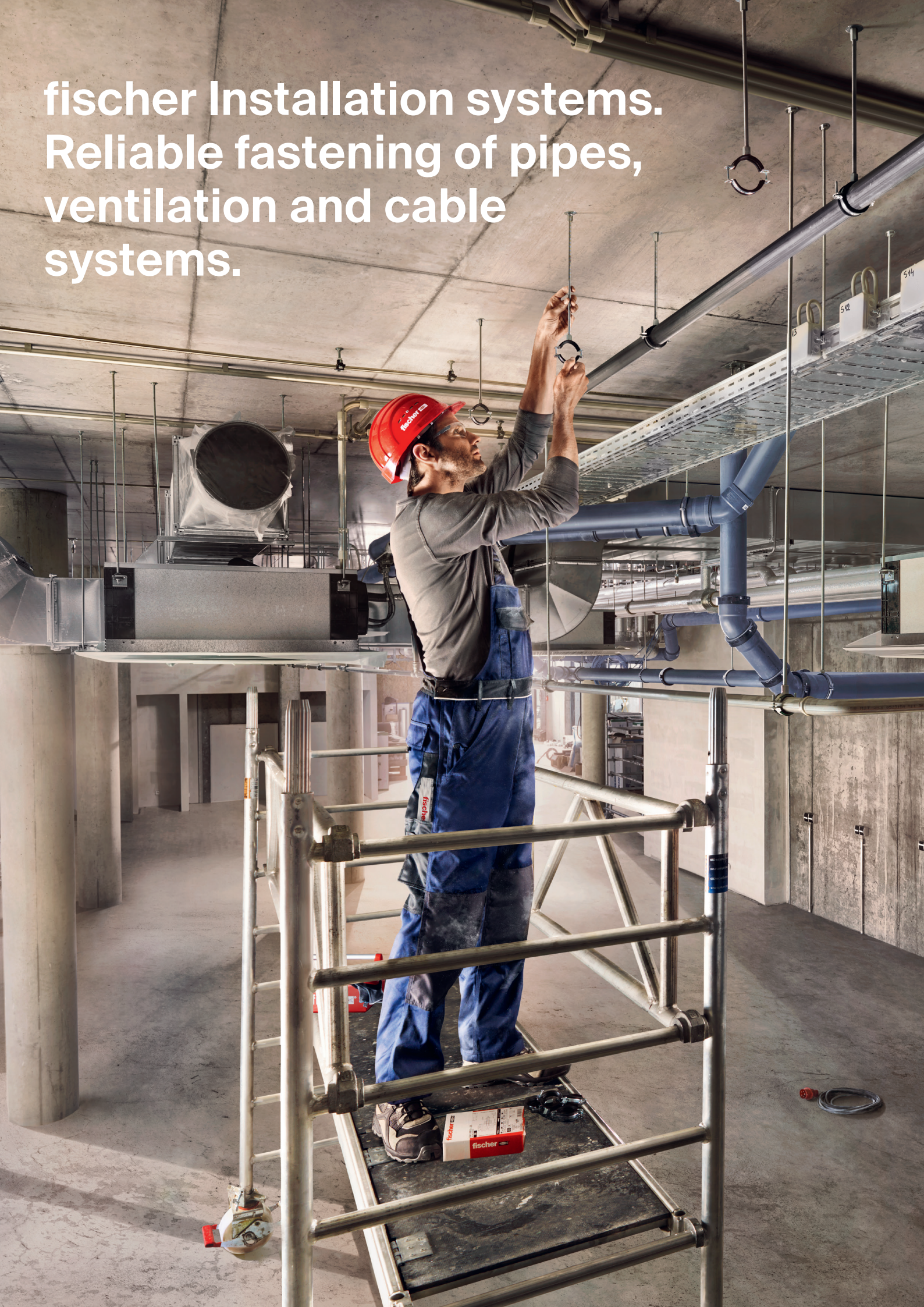


# The variable channel system. Flexibility in the system.





fischer Installation systems.  
Reliable fastening of pipes,  
ventilation and cable  
systems.





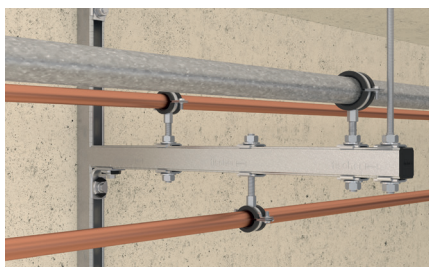
# Applications

**SF Clix 31**



Channel fastening on the floor

**MW 90° Clix**



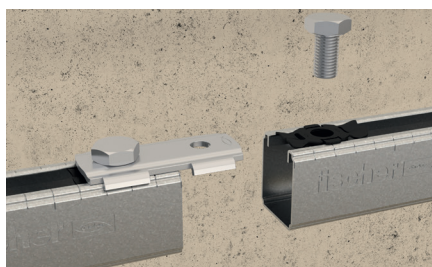
Channel construction as bracket

**FLS light channel, EMS 31**



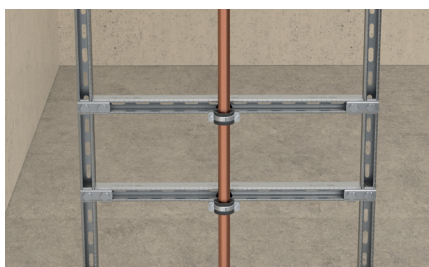
Ventilation duct fastening with suspended channel

**FSM Clix P**



Channel extension with rail connector

**SV 31**



Rack with two levels

**FSM Clix M**



Horizontal pipeline on frame construction

**HK 31**



Vertical pipe mounting on both sides

**FHS Clix**



Pipe fastening on light channel

**ALK**



Cable duct on cantilever arm

# Assortment

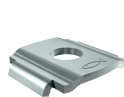
## Light channel system



ALK



WS 31/45°



HK 31



FHS Clix



MWU 90°



MW 90°



EMS 31

Item	Art.-No.	Sales unit [pcs]
Cantilever arm ALK 17-200	538738	10
Cantilever arm ALK 17-300	538739	10
Cantilever arm ALK 30-200	538740	10
Cantilever arm ALK 30-300	538741	10
Cantilever arm ALK 30-450	538742	10
Cantilever arm ALK 37-300	538743	10
Cantilever arm ALK 37-450	538744	10
Cantilever arm ALK 37-600	538745	5
Angle brace WS 31/45°	538749	10
Channel washer HK 31 8,5	538663	50
Channel washer HK 31 10,5	538664	50
T-head bolt FHS Clix 8 x 30	538653	100
T-head bolt FHS Clix 8 x 40	538654	100
T-head bolt FHS Clix 8 x 60	538655	100
T-head bolt FHS Clix 8 x 80	538656	50
T-head bolt FHS Clix 8 x 100	538657	50
T-head bolt FHS Clix 8 x 140	545834	50
T-head bolt FHS Clix 8 x 190	545835	100
T-head bolt FHS Clix 10 x 30	538658	100
T-head bolt FHS Clix 10 x 40	538659	100
T-head bolt FHS Clix 10 x 60	538660	50
T-head bolt FHS Clix 10 x 80	545836	50
T-head bolt FHS Clix 10 x 100	538661	50
Angle bracket MWU 90° (8,5)	538667	25
Angle bracket MW 90°	538668	50
Rubber inlay EMS 31	538752	1



## Light channel system



FLS



AK



SV 31



FSM Clix P



FSM Clix M



SF Clix 31



MW Clix 90°



TKR 31



Cutting tool

Item	Art.-No.	Sales unit [pcs]
Channel FLS 17/1.0 - 2 m	572539	8
Channel FLS 17/1.0 - 3 m	572540	8
Channel FLS 30/1.0 - 2 m	572541	8
Channel FLS 30/1.0 - 3 m	572542	8
Channel FLS 37/1.2 - 2 m	572543	8
Channel FLS 37/1.2 - 3 m	572544	8
Channel FLS 37/1.2 - 6 m	572545	1
Cover cap AK 17	538746	100
Cover cap AK 30	538747	100
Cover cap AK 37	538748	100
Channel connector SV 31	538641	25
Sliding channel nut FSM Clix P 6	538643	50
Sliding channel nut FSM Clix P 8	538647	50
Sliding channel nut FSM Clix P 10	538649	50
Sliding channel nut FSM Clix M 6	538650	50
Sliding channel nut FSM Clix M 8	538651	50
Sliding channel nut FSM Clix M 10	538652	50
Saddle flange SF Clix 31	538665	10
Angle bracket MW Clix 90°	538666	10
Beam clamp TKR 31	538751	25
FLS Cutting tool	543965	1

# Accessories and loads

## Recommended items



Item	Art.-No.	Sales unit [pcs]
FAZ II 8/10 <sup>1)</sup>	94871	50
FAZ II 10/10 <sup>1)</sup>	94981	50
FBS II 8x55 5/- US TX <sup>1)</sup>	536851	50
FBS II 8x70 20/5 US TX <sup>1)</sup>	536852	50
FBS 6x40/5 LP <sup>1)</sup>	523911	100
FBS 6x80/25 LP <sup>1)</sup>	66948	100
FBS 6x35 M8/M10 I	523912	100
FBS 6x55 M8/M10 I	66950	100
EA II M8x25 <sup>1)</sup>	532231	100
EA II M10x25 <sup>1)</sup>	532232	50
SXR 10x60 FUS <sup>1)</sup>	46329	100

<sup>1)</sup> Other dimensions on request.

## Load table FLS Clix elements (applies to all elements with hammer head plate FHS, FSM, MW and SF)

Type	Max. recommended tension load for FLS 17 / 1.0 and FLS 30 / 1.0  N <sub>empt</sub> [kN]	Max. recommended tension load for FLS 37 / 1.2  N <sub>empt</sub> [kN]	Max. recommended shear load  V <sub>empt</sub> [kN]	Tightening torque  T <sub>inst</sub> [Nm]
FHS Clix / FSM Clix M	1,5	2,0	1,0	8,0
FSM Clix P, HK, MW, MWU, SF, SV	1,5	2,0	1,0	10,0



# fischer Service.

## Our 360° service to you.

From software solutions, to training, to personal consulting. As a reliable partner, we are always happy to assist you with words and deeds.



## Design Software FiXperience Suite.

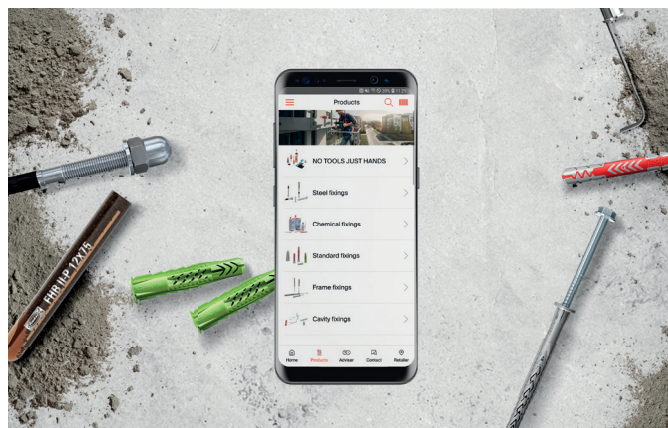
The fischer design Software FiXperience gives you safe and reliable support in measuring your projects whether you are a planer, structural engineer or craftsman. Measuring has never been so simple!

Test it now and download it for free:  
[www.fischer-international.com/fixperience](http://www.fischer-international.com/fixperience)



## fischer PRO. The Mobile Guide to Fixing Solutions for Professionals.

The fischer PRO App is a mobile guide to fixing solutions offering professionals the opportunity to quickly and easily find out about products, identify the right fixing solution through the digital guide and/or find a local dealer. Download now from Apple App Store or Google Play Store.



Dealer:

[www.fischer-international.com](http://www.fischer-international.com)



**fischer stands for**

Fixing Systems  
fischertechnik  
Consulting  
Electronic Solutions

---

**fischerwerke GmbH & Co. KG**  
Klaus-Fischer-Straße 1 · 72178 Waldachtal  
Germany  
P +49 7443 12-0  
[www.fischer-international.com](http://www.fischer-international.com) · [info@fischer.de](mailto:info@fischer.de)

---