

## Data Sheet | Item Number: 261-304/331-000

2-conductor terminal block; on one side with push-button; suitable for Ex i applications; with fixing flange; 1-pole; for screw or similar mounting types; Fixing hole 3.2 mm Ø; 2.5 mm<sup>2</sup>; CAGE CLAMP®; 2,50 mm<sup>2</sup>; blue

<https://www.wago.com/261-304/331-000>



Color: ■ blue

Similar to illustration

Through terminal block, 261 Series, CAGE CLAMP®

This through terminal block (item number 261-304/331-000) is designed to connect conductors quickly and easily. Conductors should only be connected to this through terminal block if their strip length is between 8 and 9 mm. Our mini rail-mount terminal blocks are the perfect choice when space is limited. A large selection of mounting and actuation variants means you can find a suitable mini terminal block for every purpose. This also means you can adapt the terminal blocks to your unique requirements. This product features conductor terminals and utilizes CAGE CLAMP®. Our tried-and-tested universal connection known as CAGE CLAMP® is the industry standard for connection technology and electrical interconnections. Dimensions: (6 x 28 x 23.2) mm (width x height x depth). Depending on the type of conductor, this through terminal block is designed for conductor cross sections ranging from 0.08 mm<sup>2</sup> to 2.5 mm<sup>2</sup>.

Operating tool, push-button is used to operate this mini rail-mount terminal block.

### Electrical data

#### Ratings per IEC/EN

|   |   |
|---|---|
| Nominal voltage (III/3)                   | 500 V   |
| Rated impulse withstand voltage (III / 3) | 6 kV  |
| Rated current                             | 24 A  |
| Legend (ratings)                          | (III / 3) ≙ Overvoltage category III / Pollution degree 3 |

#### Approvals per

#### UL 1059

| Use group     | B     | C     | D     |
|---------------|-------|-------|-------|
| Rated voltage | 300 V | 300 V | 600 V |
| Rated current | 15 A  | 15 A  | 5 A   |

#### Approvals per

#### CSA 22.2 No 158

| Use group     | B | C     | D     |
|---------------|---|-------|-------|
| Rated voltage | - | 300 V | 600 V |
| Rated current | - | 10 A  | 5 A   |

#### General information

Wiring direction Side-entry wiring

### Connection Data

|                            |   |
|----------------------------|---|
| Clamping units             | 2 |
| Total number of potentials | 1 |
| Number of levels           | 1 |

### Connection 1

|                                 |  |
|---------------------------------|--|
| Connection technology           | CAGE CLAMP®                                  |
| Actuation type                  | Operating tool                               |
| Connectable conductor materials | Copper                                       |
| Solid conductor                 | 0.08 ... 2.5 mm <sup>2</sup> / 28 ... 14 AWG |
| Fine-stranded conductor         | 0.08 ... 2.5 mm <sup>2</sup> / 28 ... 14 AWG |
| Strip length                    | 8 ... 9 mm / 0.31 ... 0.35 inches            |
| Pole number                     | 1  |
| Wiring direction                | Side-entry wiring                            |

### Connection 2

|                |             |
|----------------|-------------|
| Actuation type | Push-button |
|----------------|-------------|

### Physical data

|        |                        |
|--------|------------------------|
| Width  | 6 mm / 0.236 inches    |
| Height | 28 mm / 1.102 inches   |
| Depth  | 23.2 mm / 0.913 inches |

### Mechanical data

|               |                 |
|---------------|-----------------|
| Design        | horizontal type |
| Mounting type | Mounting flange |
| Marking level | Side marking    |

### Material data

|                                    |  |
|------------------------------------|--|
| Note (material data)               | <a href="#">Information on material specifications can be found here</a> |
| Color                              | blue   |
| Material group                     | I  |
| Insulation material (main housing) | Polyamide (PA66)   |
| Flammability class per UL94        | V0   |
| Fire load                          | 0.04 MJ  |
| Halogen-free                       | Yes  |
| Weight                             | 2.5 g  |

### Environmental requirements

|                                  |                 |
|----------------------------------|-----------------|
| Processing temperature           | -35 ... +85 °C  |
| Continuous operating temperature | -60 ... +105 °C |

### Commercial data

|                       |               |
|-----------------------|---------------|
| PU (SPU)              | 200 (50) pcs  |
| Packaging type        | Box           |
| Country of origin     | DE            |
| GTIN                  | 4044918619660 |
| Customs tariff number | 85369010000   |

**Product Classification**

|             |                      |
|-------------|----------------------|
| UNSPSC      | 39121410             |
| eCl@ss 10.0 | 27-14-11-06          |
| eCl@ss 9.0  | 27-14-11-06          |
| ETIM 9.0    | EC001284             |
| ETIM 10.0   | EC001284             |
| ECCN        | NO US CLASSIFICATION |

**Environmental Product Compliance**

|                        |                         |
|------------------------|-------------------------|
| RoHS Compliance Status | Compliant, No Exemption |
|------------------------|-------------------------|

**Approvals / Certificates**

**General approvals** **Declarations of conformity and manufacturer's declarations**



| Approval                              | Standard | Certificate Name |
|---------------------------------------|----------|------------------|
| CCA<br>DEKRA Certification B.V.       | EN 60998 | NTR-NL 6509      |
| KEMA/KEUR<br>DEKRA Certification B.V. | EN 60998 | 2110272.02       |

| Approval   | Standard | Certificate Name |
|--|----------|------------------|
| EU-Declaration of Conformity<br>WAGO GmbH & Co. KG | -        | -                |
| UK-Declaration of Conformity<br>WAGO GmbH & Co. KG | -        | -                |

**Approvals for marine applications**



| Approval                           | Standard  | Certificate Name  |
|------------------------------------|-----------|-------------------|
| ABS<br>American Bureau of Shipping | -         | 24-0095979-PDA    |
| DNV<br>DNV GL SE                   | -         | TAE00001V2        |
| LR<br>Lloyds Register              | IEC 60998 | LR22173030TA      |
| PRS<br>Polski Rejestr Statków      | -         | TE/1094/880590/23 |

**Downloads**

**Environmental Product Compliance**

|   |
|---|
| <b>Compliance Search</b>                            |
| Environmental Product Compliance<br>261-304/331-000 |

## Documentation

| Bid Text        |            |                 |  |
|-----------------|------------|-----------------|--|
| 261-304/331-000 | 19.02.2019 | xml<br>3.34 KB  |  |
| 261-304/331-000 | 16.08.2017 | doc<br>25.00 KB |  |

## CAD/CAE-Data

| CAD data                        | CAE data                             |
|---------------------------------|--------------------------------------|
| 2D/3D Models<br>261-304/331-000 | EPLAN Data Portal<br>261-304/331-000 |
|                                 | WSCAD Universe<br>261-304/331-000    |
|                                 | ZUKEN Portal<br>261-304/331-000      |

## 1 Compatible Products

### 1.1 Required Accessories

#### 1.1.1 End plate

##### 1.1.1.1 End plate



[Item No.: 261-361](#)  
End plate; with fixing flange; gray

### 1.2 Optional Accessories

#### 1.2.1 Ferrule

##### 1.2.1.1 Ferrule



[Item No.: 216-301](#)  
Ferrule; Sleeve for 0.25 mm<sup>2</sup> / AWG 24; insulated; electro-tin plated; yellow



[Item No.: 216-131](#)  
Ferrule; Sleeve for 0.25 mm<sup>2</sup> / AWG 24; uninsulated; electro-tin plated; silver-colored



[Item No.: 216-302](#)  
Ferrule; Sleeve for 0.34 mm<sup>2</sup> / 22 AWG; insulated; electro-tin plated; light turquoise



[Item No.: 216-201](#)  
Ferrule; Sleeve for 0.5 mm<sup>2</sup> / 20 AWG; insulated; electro-tin plated; electrolytic copper; acc. to DIN 46228, Part 4/09.90; white



[Item No.: 216-101](#)  
Ferrule; Sleeve for 0.5 mm<sup>2</sup> / AWG 22; uninsulated; electro-tin plated; silver-colored



[Item No.: 216-202](#)  
Ferrule; Sleeve for 0.75 mm<sup>2</sup> / 18 AWG; insulated; electro-tin plated; gray



[Item No.: 216-102](#)  
Ferrule; Sleeve for 0.75 mm<sup>2</sup> / AWG 20; uninsulated; electro-tin plated; silver-colored



[Item No.: 216-203](#)  
Ferrule; Sleeve for 1 mm<sup>2</sup> / AWG 18; insulated; electro-tin plated; red



[Item No.: 216-103](#)  
Ferrule; Sleeve for 1 mm<sup>2</sup> / AWG 18; uninsulated; electro-tin plated



[Item No.: 216-204](#)  
Ferrule; Sleeve for 1.5 mm<sup>2</sup> / AWG 16; insulated; electro-tin plated; black



[Item No.: 216-104](#)  
Ferrule; Sleeve for 1.5 mm<sup>2</sup> / AWG 16; uninsulated; electro-tin plated; silver-colored



[Item No.: 216-205](#)  
Ferrule; Sleeve for 2.08 mm<sup>2</sup> / AWG 14; insulated; electro-tin plated; yellow

### 1.2.1.1 Ferrule



**Item No.: 216-206**

Ferrule; Sleeve for 2.5 mm<sup>2</sup> / AWG 14; insulated; electro-tin plated; blue

**Item No.: 216-106**

Ferrule; Sleeve for 2.5 mm<sup>2</sup> / AWG 14; un-insulated; electro-tin plated; silver-colored

### 1.2.2 Installation

#### 1.2.2.1 Mounting accessories



**Item No.: 209-137**

Mounting adapter; can be used as end stop; 6.5 mm wide; gray

**Item No.: 209-123**

Mounting foot with screw; can be screwed on terminal blocks with fixing flange; 6.4 mm wide; gray

### 1.2.3 Jumper

#### 1.2.3.1 Jumper



**Item No.: 261-402**

Jumper; for conductor entry; 2-way; insulated; gray

### 1.2.4 Marking

#### 1.2.4.1 Marking strip



**Item No.: 210-833**

Marking strips; 25 m on roll; 6 mm wide; plain; Self-adhesive; white

### 1.2.5 Tool

#### 1.2.5.1 Operating tool



**Item No.: 210-658**

Operating tool; Blade: 3.5 x 0.5 mm; with a partially insulated shaft; angled; short; multicoloured

**Item No.: 210-720**

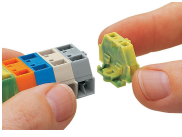
Operating tool; Blade: 3.5 x 0.5 mm; with a partially insulated shaft; multicoloured

**Item No.: 210-657**

Operating tool; Blade: 3.5 x 0.5 mm; with a partially insulated shaft; short; multicoloured

## Installation Notes

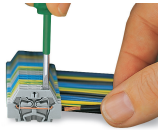
### Installation



Assembling modular terminal blocks into terminal strips.

Mounting an end plate.

### Conductor termination



#### CAGE CLAMP® connection

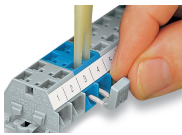
Inserting a conductor.

With ferruled conductors, it is necessary to use a terminal block one size larger than the conductor's nominal cross-section.

#### CAGE CLAMP® connection

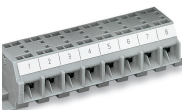
Inserting a conductor via push-button.

### Commoning



Commoning with comb-style jumper bar.

### Marking



Marking with self-adhesive marking strips.

Marking by direct printing (upon request).