

# Concord

## LYTESPAN TRIMLESS ENDCAP+SIDE LOCK BLACK 9004/TR-B 2070294



### Features

- Lytespan Trimless Recessed accessory, end cap with locking screw, steel body. Black.



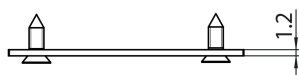
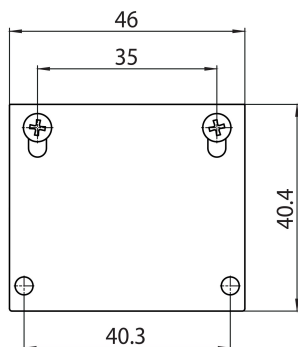
### Product Overview

<b>Product name</b>	LYTESPAN TRIMLESS ENDCAP+SIDE LOCK BLACK 9004/TR-B
<b>Technology</b>	Accessory
<b>Housing</b>	PC Polycarbonate
<b>Mount</b>	Track mounting
<b>General application</b>	Hospitality, Museums & Galleries, Office
<b>ETIM Class</b>	EC002557
<b>Housing colour</b>	Black
<b>Product EAN number</b>	5025768702947
<b>Warranty</b>	5 years

# Concord

## LYTESPAN TRIMLESS ENDCAP+SIDE LOCK BLACK 9004/TR-B 2070294

### Technical drawings



### Data table

#### GENERAL DATA

<b>Product name</b>	LYTESPAN TRIMLESS ENDCAP+SIDE LOCK BLACK 9004/TR-B
<b>Technology</b>	Accessory
<b>Accessory type</b>	Electrical
<b>Type of accessory</b>	End cap
<b>Housing</b>	PC Polycarbonate
<b>Mount</b>	Track mounting
<b>General application</b>	Hospitality, Museums & Galleries, Office
<b>ETIM Class</b>	EC002557
<b>Warranty</b>	5 years

# Concord

## LYTESPAN TRIMLESS ENDCAP+SIDE LOCK BLACK 9004/TR-B 2070294

### ELECTRICAL DATA

Control gear required	No
-----------------------	----

### PHYSICAL DATA

Housing colour	Black
----------------	-------

Nominal Product Length (mm)	46
-----------------------------	----

Nominal Product Width (mm)	40.4
----------------------------	------

Nominal Product Height (mm)	1.2
-----------------------------	-----

Weight (kg)	0.4
-------------	-----

### PACKAGING

Product EAN number	5025768702947
--------------------	---------------

Packaging single length / height (cm)	16.0
---------------------------------------	------

Packaging single width (cm)	16.0
-----------------------------	------

Packaging single depth (cm)	4.0
-----------------------------	-----

DUN14 (outer)	05025768702947
---------------	----------------

Units per outer package	20
-------------------------	----

Packaging outer length / height (cm)	16.0
--------------------------------------	------

Packaging outer width (cm)	16.0
----------------------------	------

Packaging outer depth (cm)	4.0
----------------------------	-----

### SAFETY DATA

Special purpose lamp	No
----------------------	----

Dry applications use only	No
---------------------------	----

Suitable for household illumination	No
-------------------------------------	----