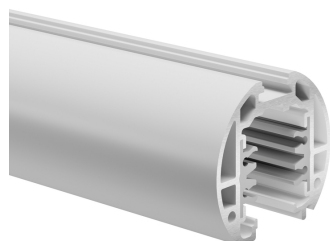


Concord

LYTESPAN ROUND TRACK 4M WHITE 9000-4/W-ST15
2070271



Features

- Lytespan Round Track - 3 circuit track + 2 circuit control L1/L2/L3/Neutral/ground 16A/440V + D+/D- 2x1A/50V FELV AC, DALI, DMX, 1-10V etc. compatible, circuits can be controlled individually, aluminum body, suitable for suspended installation only, 4000 x 46 x 40 mm (L x W x H), white (RAL 9010).

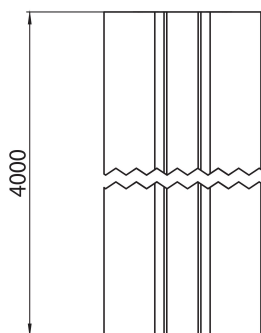
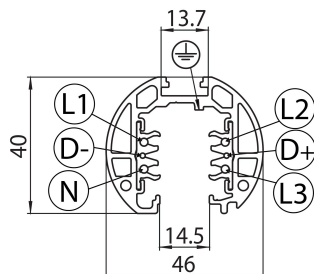
Product Overview

Product name	LYTESPAN ROUND TRACK 4M WHITE 9000-4/W-ST15
Technology	Accessory
Housing	Aluminium
Mount	Suspended
General application	Hospitality, Museums & Galleries, Office
ETIM Class	EC000101
Electrical protection	Class I
Housing colour	RAL 9010 - Pure white
Product EAN number	5025768702718
Warranty	5 years

Concord

LYTESPAN ROUND TRACK 4M WHITE 9000-4/W-ST15 2070271

Technical drawings



Data table

GENERAL DATA

Product name	LYTESPAN ROUND TRACK 4M WHITE 9000-4/W-ST15
Technology	Accessory
Accessory type	Electrical
Type of accessory	Track
Housing	Aluminium
Mount	Suspended
General application	Hospitality, Museums & Galleries, Office
ETIM Class	EC000101
Warranty	5 years

Concord

LYTESPAN ROUND TRACK 4M WHITE 9000-4/W-ST15 2070271

ELECTRICAL DATA

Primary Supply/Product voltage - min (V)	220.0
Primary Supply/Product voltage - max (V)	240.0
Electrical protection	Class I
Control gear required	No

PHYSICAL DATA

Housing colour	RAL 9010 - Pure white
Nominal Product Length (mm)	4000
Nominal Product Width (mm)	46
Nominal Product Height (mm)	40
Weight (kg)	4.9

PACKAGING

Product EAN number	5025768702718
Packaging single length / height (cm)	406.0
Packaging single width (cm)	6.2
Packaging single depth (cm)	6.2
DUN14 (outer)	05025768702718
Units per outer package	1
Packaging outer length / height (cm)	406.0
Packaging outer width (cm)	6.2
Packaging outer depth (cm)	6.2

SAFETY DATA

Special purpose lamp	No
Dry applications use only	No
Suitable for household illumination	No