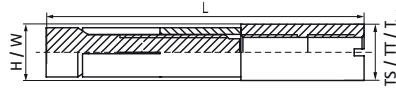
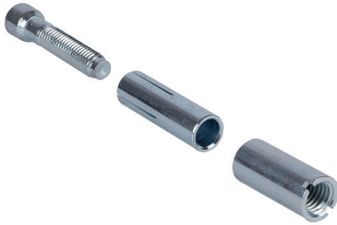


Walraven WGB-M Aerated Concrete Anchor

(L0382)

for soft substrate



Features & benefits

- internal thread connection allows flexible distance from the anchor to the fixture
- load can be applied immediately after installation
- installation does not require drilling
- four-way expansion provides high permissible loads, even in tensile areas of roofs and ceilings
- high load safety due to undercutting expansion
- fire resistance class R30-R120 for design of anchorages under exposure to fire
- with VdS-approval - certificate number G 4980083 for applications with stationary fire extinguishing systems
- material: steel
- zinc plated



Product Number	Thread Size	Thread Type	Total Height	Total Width	Total Length	Minimum Screw Depth	Minimum Substrate Thickness	Torque Moment For Installation
<i>Reference letter</i>	<i>TS</i>	<i>TT</i>	<i>H</i>	<i>W</i>	<i>L</i>	<i>ls,min</i>	<i>hmin</i>	<i>T inst.</i>
<i>Unit description</i>			<i>mm</i>	<i>mm</i>	<i>mm</i>	<i>mm</i>	<i>mm</i>	<i>Nm</i>
6103510	M10	Metric	16	16	90	10	175	8
6103512	M12	Metric	16	16	90	12	175	8