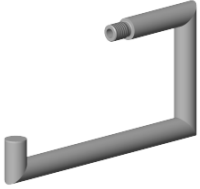


Holder 150 x 80 x 13 mm - Brushed Bronze (PVD)

SPARE PARTS

90 28 22 626 00



| | | |
|---|-------------------------------|--------------------|
|  | Brushed Bronze (PVD) | 90 28 22 626 00-42 |
|  | Chrome | 90 28 22 626 00-00 |
|  | Dark Chrome | 90 28 22 626 00-19 |
|  | Light Gold (PVD) | 90 28 22 626 00-26 |
|  | Brushed Light Gold (PVD) | 90 28 22 626 00-27 |
|  | Matte Black | 90 28 22 626 00-33 |
|  | Brushed Dark Brass (PVD) | 90 28 22 626 00-39 |
|  | Brushed Champagne (22kt Gold) | 90 28 22 626 00-46 |
|  | Champagne (22kt Gold) | 90 28 22 626 00-47 |
|  | Brushed Chrome | 90 28 22 626 00-93 |
|  | Brushed Dark Platinum | 90 28 22 626 00-99 |



Holder 150 x 80 x 13 mm - Brushed Bronze (PVD)

SPARE PARTS

90 28 22 626 00



Holder 150 x 80 x 13 mm - Brushed Bronze (PVD)

SPARE PARTS

90 28 22 626 00

90 28 22 626 00

Parts for other
finishes can be found
here: [Chrome](#)

