

Bath cascade spout for wall mounting - Brushed Platinum

SERIES SPECIFIC

13 430 740 Product version from 4/1/2025



- 200mm projection
- cascade
- plate 180 mm x 60 mm
- hole diameter 40 mm
- 1/2" connection
- plug-link mounting
- max. flow 26.5 l/min at 3 bar flow pressure
- WRAS

	Brushed Platinum	13 430 740-06
	Chrome	13 430 740-00
	Platinum	13 430 740-08
	Dark Chrome	13 430 740-19
	Brushed Light Gold (PVD)	13 430 740-27
	Brushed Durabrass (23kt Gold)	13 430 740-28
	Matte Black	13 430 740-33
	Brushed Dark Brass (PVD)	13 430 740-39
	Brushed Bronze (PVD)	13 430 740-42
	Brushed Dark Bronze (PVD)	13 430 740-43
	Brushed Champagne (22kt Gold)	13 430 740-46
	Champagne (22kt Gold)	13 430 740-47
	Brushed Dark Platinum	13 430 740-99

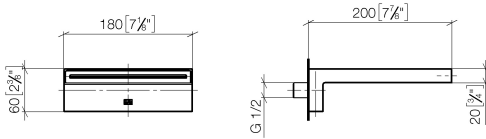
Recommended miscellaneous

- Concealed wall elbow -** 35 085 970 90
- min. recess depth 90 mm
 - max. recess depth 163 mm

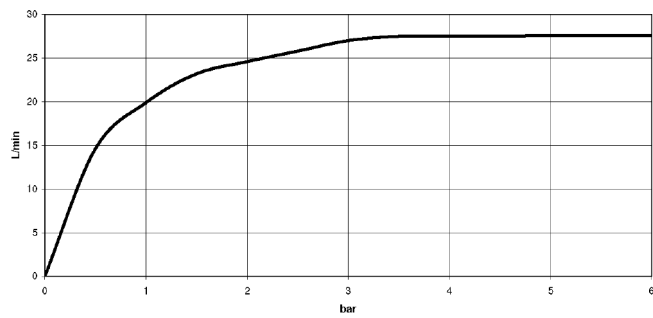


13 430 740 Product version from 4/1/2025

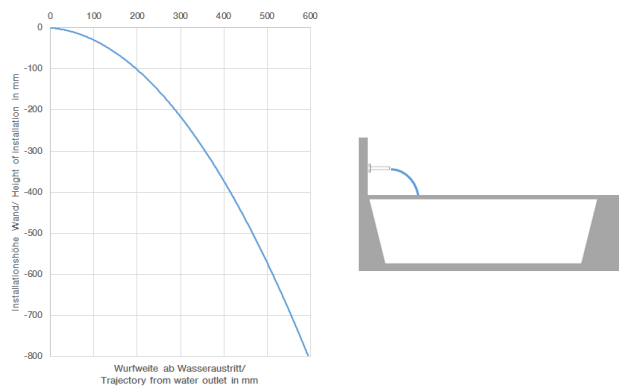
mm [inches]



Flow rate chart



Trajectory diagram



Codes & Standards

ASME A112.18.1	cUPC	DIN 4109	ISO 3822
Scottish Water Byelaws	UK Water Supply Regulations	Ü-Zeichen	



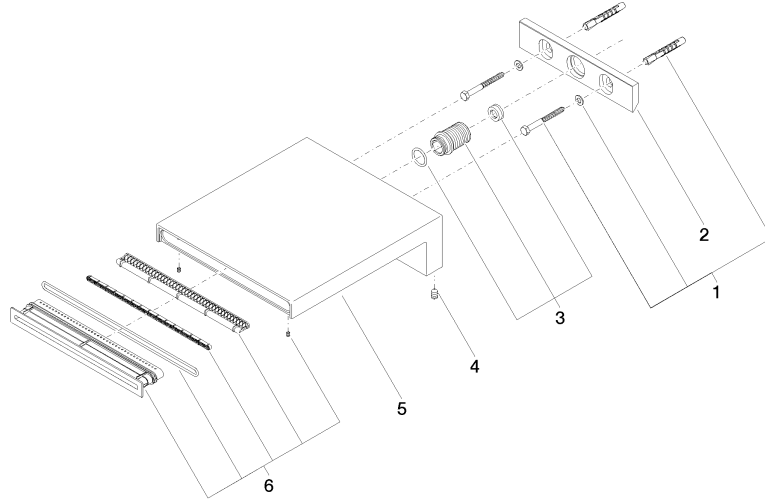
Bath cascade spout for wall mounting - Brushed Platinum

SERIES SPECIFIC

13 430 740 Product version from 4/1/2025

Certificates and sustainability

WRAS_240502	IAPMO_4976	LGA_19	EPD-DOR-20230287 -IBA1-EN Environmental.prod uct-declarat
-------------	------------	--------	--



Spare parts list

No.	Item Number	Name	Quantity used	Delivery time
2	09 17 97 056 90	Holder 145 x 30 x 8 mm -	1.00	14
4	09 31 11 144 90	Mounting Threaded pin with hexagon socket with point M6 x 10 mm -	2.00	14
1	04 30 31 014 00 90	Attachment set Wood screw with dowel 5 x 50 mm -	1.00	14
3	90 24 05 008 00 90	Nipple Ø 23 x 35 mm -	1.00	14
5	09 11 74 042-06	Spout 200 x 180 x 60 mm - Brushed Platinum	1.00	-
Spare part can no longer be ordered, please order the replacement item				
6	90 29 03 059 00 90	Beam shaper 175 x 20 x 35 mm -	1.00	14