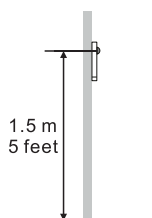


Preparation

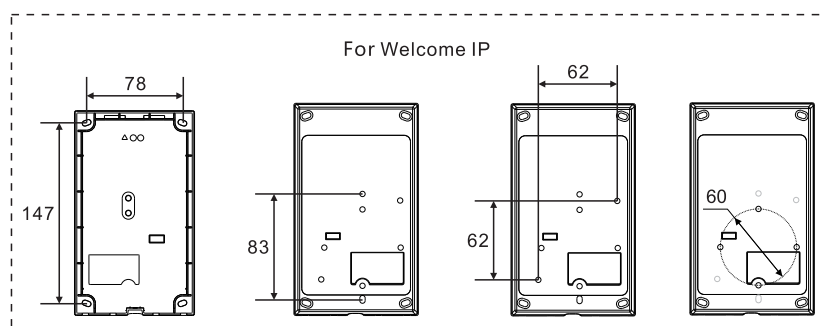
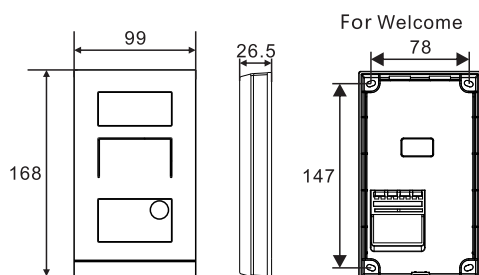


Use gloves to protect yourself against cuts.

Installation height

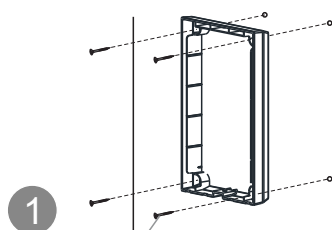


Surface-mounted installation (Unit: mm)



Option 1: on the wall

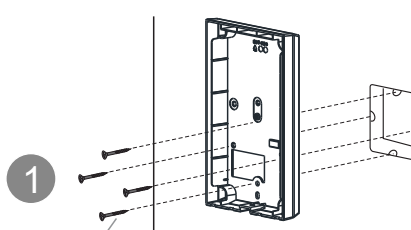
Both for Welcome & Welcome IP



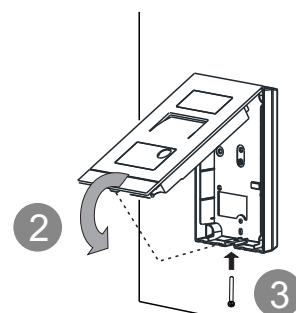
1
Mounting screw x 4
Screw shaft: Ø4 mm
Screw length: ≥ 25 mm

Option 2: on the box (e.g. VDE box)

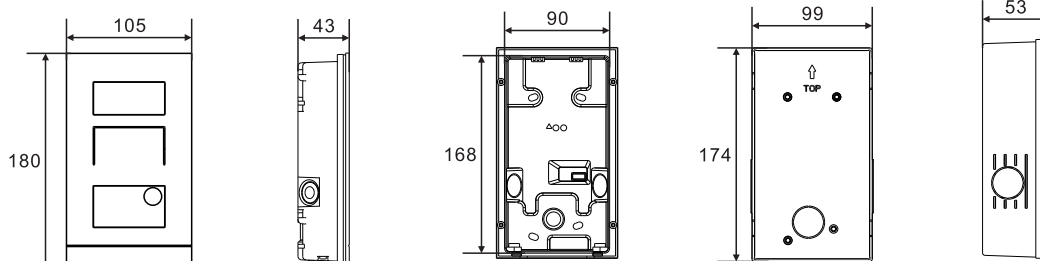
Only for Welcome IP



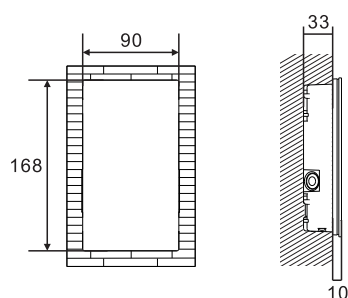
1
Mounting screw x 4
Screw shaft: Ø4 mm
Screw length: ≥ 25 mm



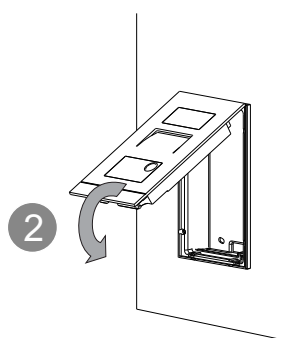
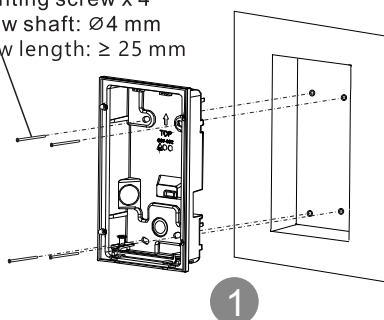
Flush-mounted installation (Unit: mm)



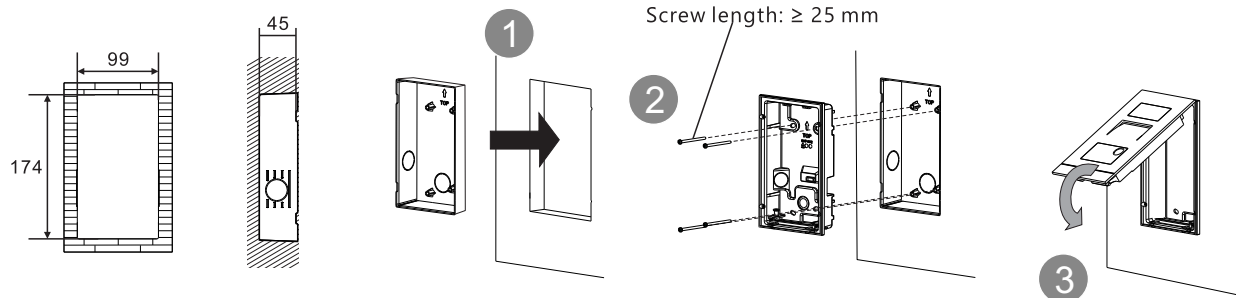
Option 1: without pre-installation box



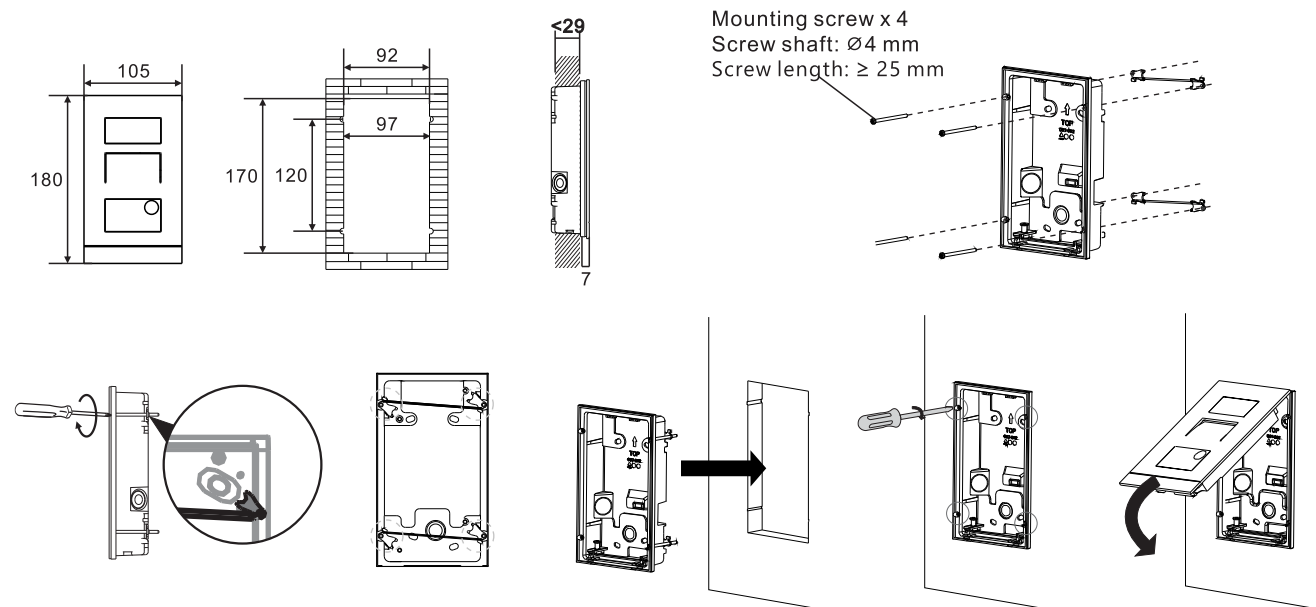
Mounting screw x 4
Screw shaft: Ø4 mm
Screw length: ≥ 25 mm



Option 2: with pre-installation box



Cavity wall installation



Replace the nameplate

