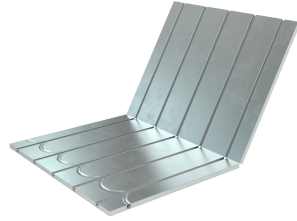




UFH-DRY-1625-150F: SECOR PANEL 1625, c150 - 25mm



Commercial information

HENCO SECOR is a dry system with a very low construction height. The absence of a screed ensures a quick installation and low thermal inertia. The panels already have an aluminium layer for optimum heat emission. Henco Secor is installed with Henco multilayer pipes and is only laid in a meandering pattern.

The floor finish can be applied immediately after installation of the underfloor heating, making the system the ideal solution for renovations.

The main advantages of

HENCO SECOR are:

- Very low construction height
- Low thermal inertia
- Short drying time (no screed)
- Floor finish can be applied immediately
- Very light weight
- Suited for renovations

Certificates

Applications

Heating, Cooling, Underfloor Heating

Solutions

Underfloor heating, Building installations, Industry, Utility

Technical characteristics

Material	Plastic	Modular spacing	0 Millimetre
Surface protection	Untreated	Length	1175 Millimetre
		Width	750 Millimetre
		Thickness	25 Millimetre

Related products