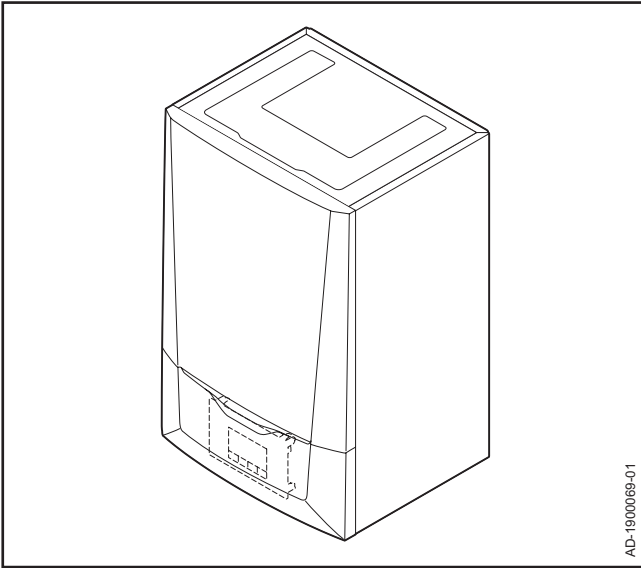


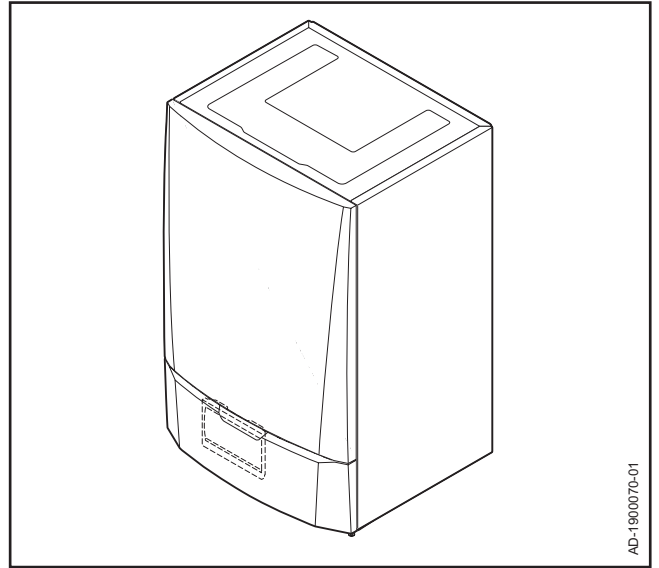
AD-1000752-01

Montage instructie  
Assembly instructions  
Instructions de montage  
Montageanweisung  
Instrucciones para el montaje  
Istruzioni di montaggio

**Restrictiering**  
**Restrictor**  
**Réducteur**  
**Drosselkörper**  
**Anillo de restricción**  
**Restrittore**

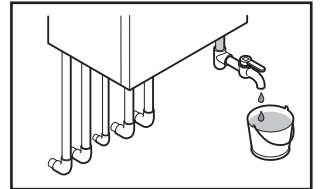
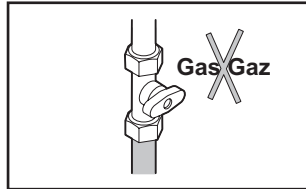
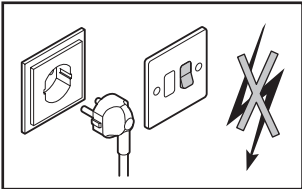
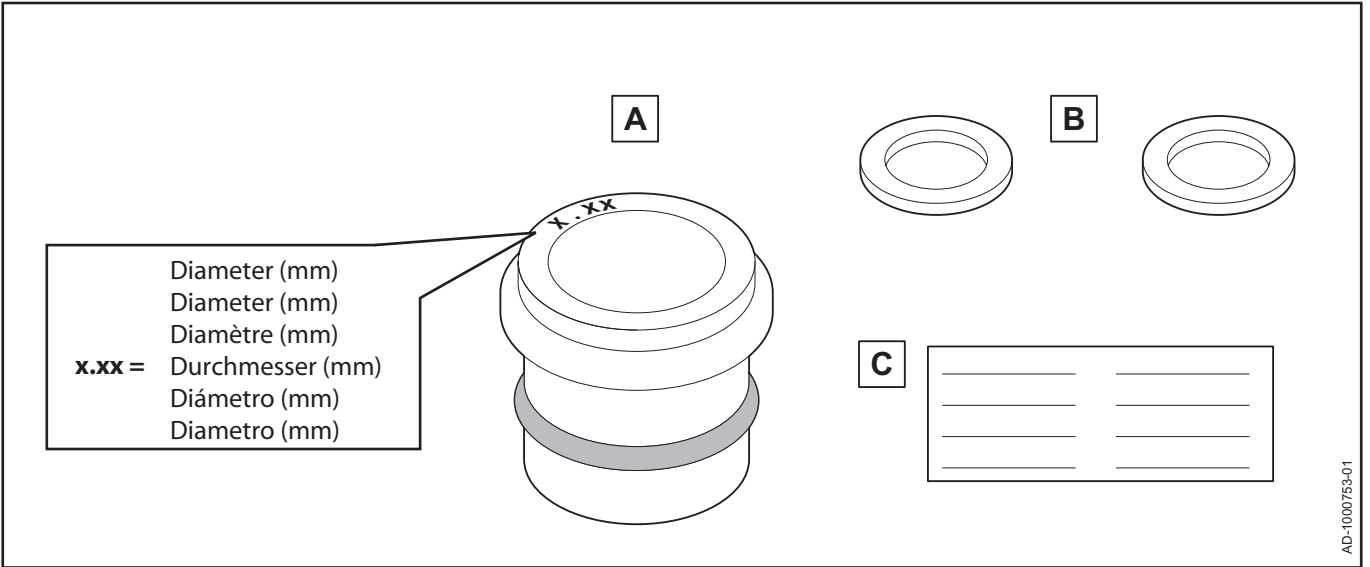


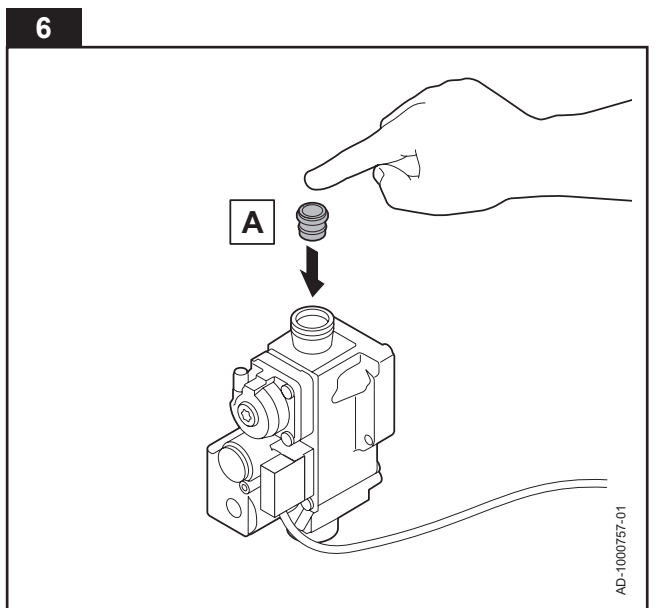
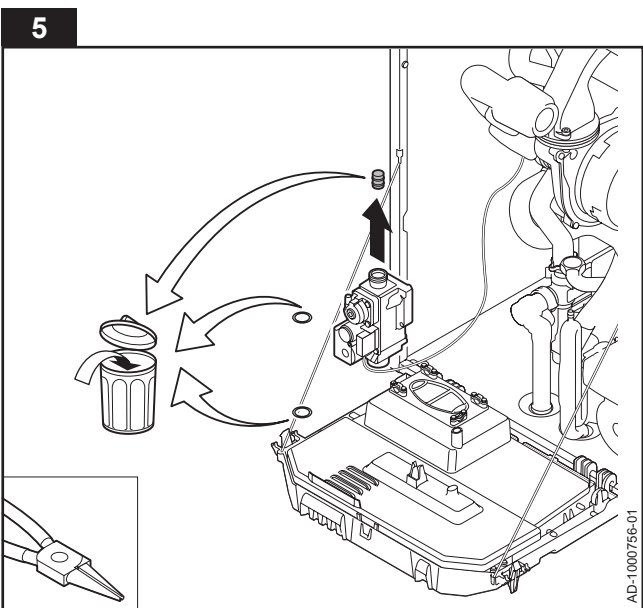
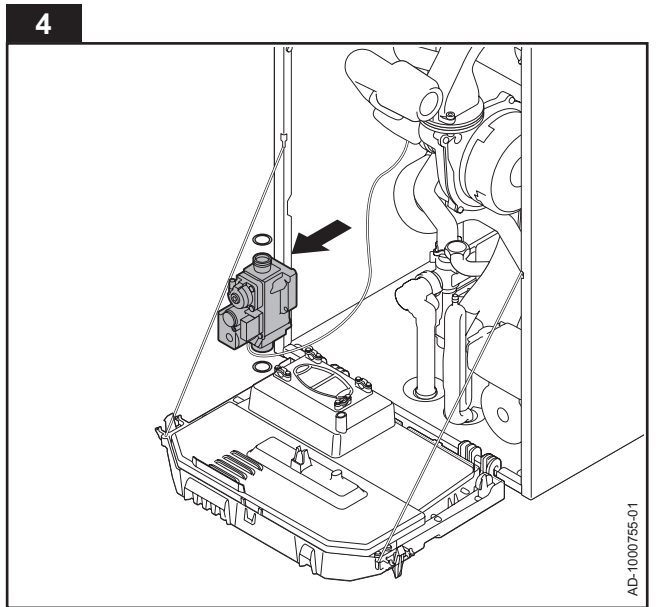
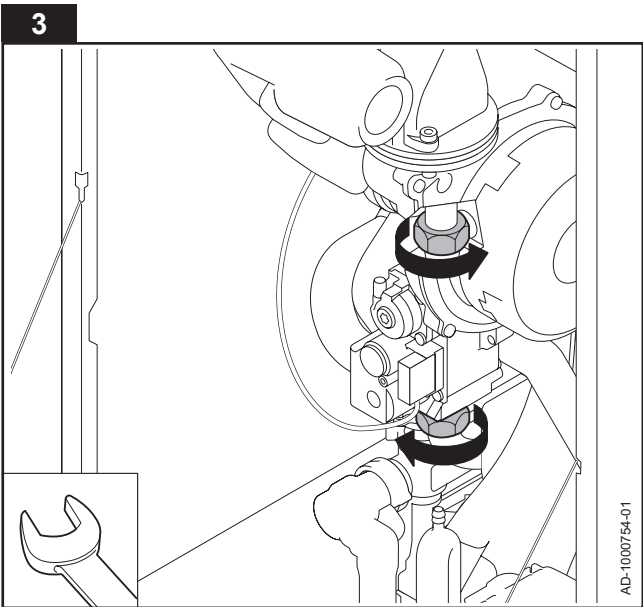
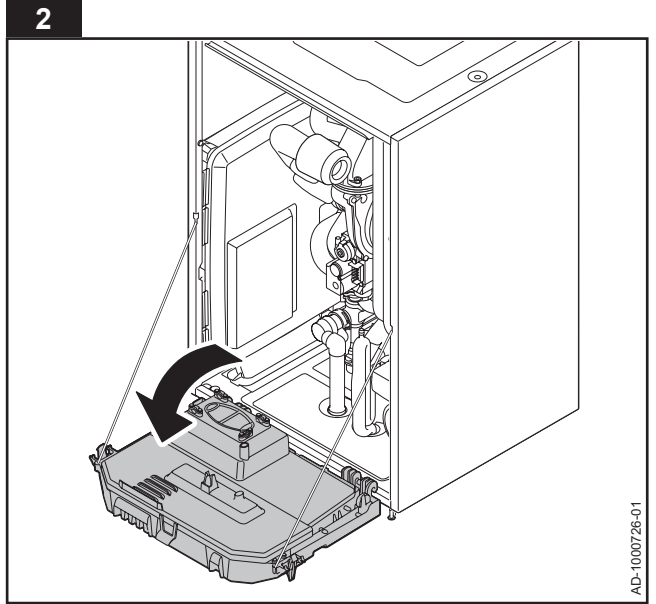
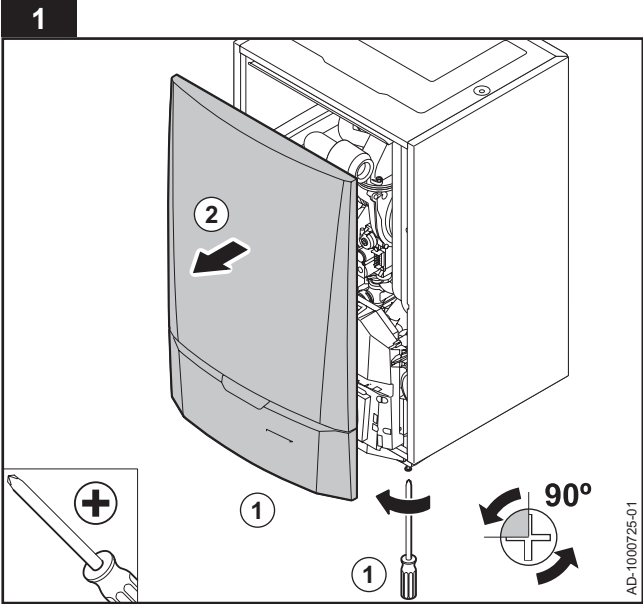
AD-1900069-01



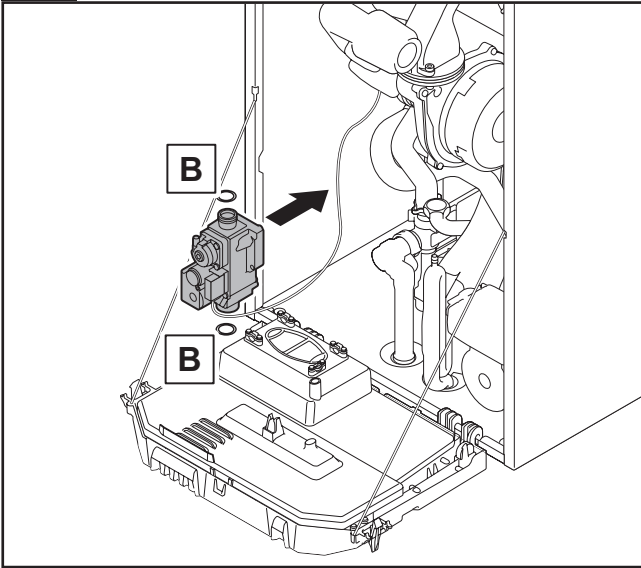
AD-1900070-01

Inhoud verpakking - Set contents - Contenu du kit  
 Inhalt des Bauatztes - Contenido del paquete - Contenuti del pacchetto

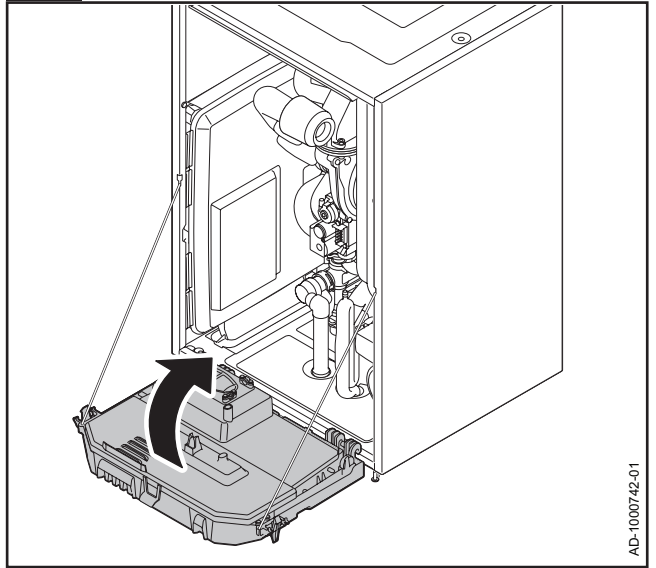




7

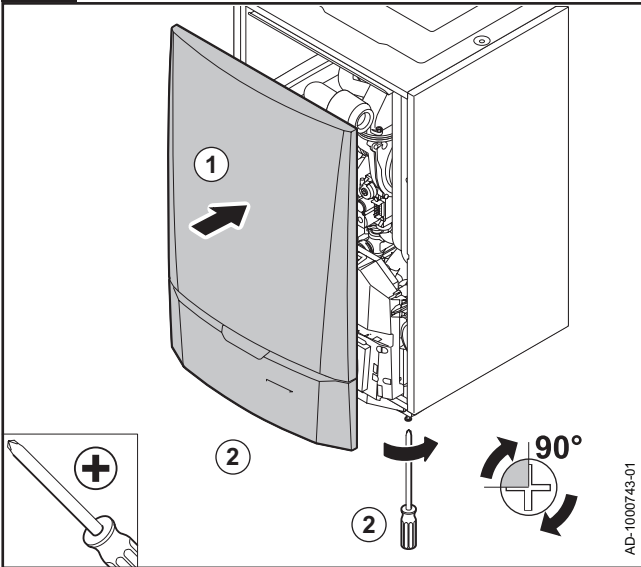


8

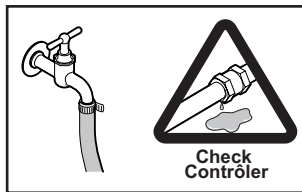
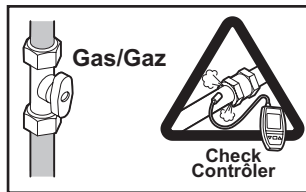
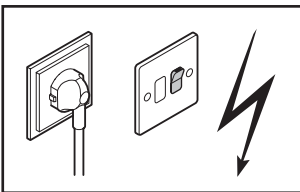


AD-1000742-01

9



AD-1000743-01



**Let op belangrijke informatie.**

Voor een veilige werking:  
Controleer de juiste CO<sub>2</sub> instelling en ketelparameters voor de aangesloten gassoort.  
Voor meer informatie, zie onze "Installatie- en servicehandleiding".

**Attention important information.**

For safety operation:  
Check the correct CO<sub>2</sub> values and boiler parameter settings for the connected type of gas.  
For detailed information, see our 'Installation and Service Manual'.

**Attention information importante.**

Pour la sécurité de fonctionnement:  
Vérifiez le réglage du rapport CO<sub>2</sub> et les paramètres de la chaudière pour le type de gaz utilisé.  
Pour de plus amples informations, voir notre 'Notice d'installation et d'entretien'.

**Achtung wichtige Informationen.**

Für einen sicheren Betrieb:  
Überprüfen Sie die ordnungsgemäße Einstellwerte CO<sub>2</sub> und Kesselparameter für die angeschlossene Gassorte.  
Für weitere Hinweise, siehe unsere "Installations- und Wartungsanleitung".

**Atencion información importante.**

Para la seguridad de funcionamiento:  
Ajustar la relación CO<sub>2</sub> y parametrización de la caldera para los gases conectados.  
Para mayor información consultar las: "Instrucciones de instalación y de mantenimiento".

**Attenzione informazione importante.**

Per un funzionamento tutta sicurezza:  
Verificare la regolazione CO<sub>2</sub> e parametrizzazione della caldaia per il tipo di gas fornito.  
Per maggiori informazioni fare alle: "Istruzioni per l'installazione e la manutenzione".

Vul de sticker (C): "Ingesteld op.." in en plak hem bovenop de ketel naast het typeplaatje.

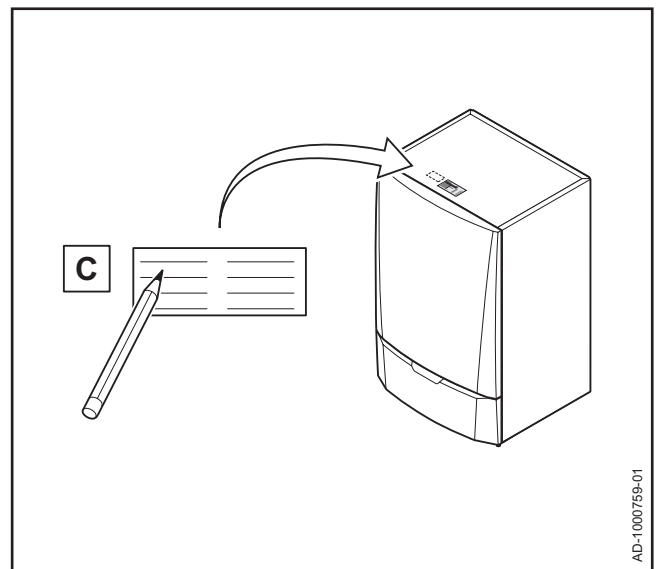
Fill in the label (C): "Adjusted for..." and stick it next to the type plate on the boiler.

Compléter l'étiquette (C): "Réglé sur..." et coller l'étiquette à côté de la plaquette signalétique de la chaudière.

Den Aufkleber (C): "Eingestellt auf..." ausfüllen und neben dem Typenschild des Heizkessels aufkleben.

Completar la etiqueta (C): "Ajustado en..." y pegar la etiqueta naast además de la placa de señalización de la caldera.

Compilare l'etichetta (C): "Regolata su..." e incollare l'etichetta inoltre alla targhetta identificativa della caldaia.







**© Copyright**

All technical and technological information contained in these technical instructions, as well as any drawings and technical descriptions supplied, remain our property and shall not be multiplied without our prior consent in writing.

Ours is a policy of continuous development. We reserve the right to alter specifications without prior notification.

Subject to alterations