



Color: ■ silver-colored      Similar to illustration

Electrical data

Ratings per IEC/EN	
Rated current	32 A

Physical data

Pin spacing	10 mm / 0.394 inches
Jumper assignment	1-3

Mechanical data

Suitable	for 745 Series (4 mm²)
----------	------------------------

Material data

Note (material data)	<a href="#">Information on material specifications can be found here</a>
Color	silver-colored
Contact material	Copper alloy
Contact Plating	Tin
Fire load	0 MJ
Weight	1.2 g

Commercial data

Product Group	4 (Printed Circuit Connectors)
eCl@ss 10.0	27-14-11-40
eCl@ss 9.0	27-44-04-92
ETIM 9.0	EC000489
ETIM 8.0	EC000489
PU (SPU)	250 (50) pcs
Packaging type	Box
Country of origin	CH
GTIN	4044918303392
Customs tariff number	85366990990



Environmental Product Compliance	
RoHS Compliance Status	Compliant,No Exemption

Downloads

Environmental Product Compliance

Compliance Search	
Environmental Product Compliance 745-281	

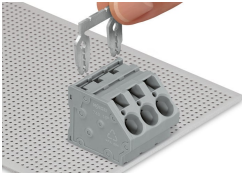
Documentation

Additional Information			
Technical Section	03.04.2019	pdf 2027.26 KB	

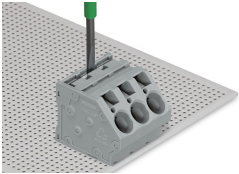
CAD/CAE-Data

CAD data	
2D/3D Models 745-281	

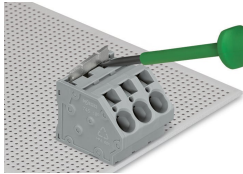
Installation Notes



Inserting a comb-style jumper bar.



To insert a comb-style jumper bar, push it down using a screwdriver until it hits the backstop – 745 Series.



To remove the jumper bar, lift it up using a screwdriver – 745 Series.