

System M and System D- Connected Wireless Switch 1-gang/2-gang

Device user guide

Information about features and functionality of the device.

03/2025

merten™



Legal Information

The information provided in this document contains general descriptions, technical characteristics and/or recommendations related to products/solutions.

This document is not intended as a substitute for a detailed study or operational and site-specific development or schematic plan. It is not to be used for determining suitability or reliability of the products/solutions for specific user applications. It is the duty of any such user to perform or have any professional expert of its choice (integrator, specifier or the like) perform the appropriate and comprehensive risk analysis, evaluation and testing of the products/solutions with respect to the relevant specific application or use thereof.

The Schneider Electric brand and any trademarks of Schneider Electric SE and its subsidiaries referred to in this document are the property of Schneider Electric SE or its subsidiaries. All other brands may be trademarks of their respective owner.

This document and its content are protected under applicable copyright laws and provided for informative use only. No part of this document may be reproduced or transmitted in any form or by any means (electronic, mechanical, photocopying, recording, or otherwise), for any purpose, without the prior written permission of Schneider Electric.

Schneider Electric does not grant any right or license for commercial use of the document or its content, except for a non-exclusive and personal license to consult it on an "as is" basis.

Schneider Electric reserves the right to make changes or updates with respect to or in the content of this document or the format thereof, at any time without notice.

To the extent permitted by applicable law, no responsibility or liability is assumed by Schneider Electric and its subsidiaries for any errors or omissions in the informational content of this document, as well as any non-intended use or misuse of the content thereof.

Table of Contents

Safety Information.....	4
System M and System D- Connected Wireless Switch 1-gang/2-gang	5
For your safety	5
About the device.....	6
Installing the device	6
Changing the device from 1-gang to 2-gang.....	7
Quick Home Connect.....	8
Pairing Wireless Switch with Devices.....	9
Using the Wireless switch in Quick Home Connect	14
Resetting the Device in Quick Home Connect	16
LED Indications in Quick Home Connect.....	16
Troubleshooting in Quick Home Connect	16
Pairing the device with the Wiser Hub	18
Configuring the device	20
Setting the device location	20
Renaming the device	21
Identifying the device	22
Removing the device from the system	23
Resetting the device.....	24
Using the device	24
Switching operation.....	24
Assigning an Action to a Push Button	25
Assigning a Moment to the Push Button.....	27
Removing configured Action/Moment	28
Replacing the battery	29
LED indications	30
Troubleshooting	30
Technical Data	30
Compliance	31
Product Environmental Data.....	31
Trademarks.....	31

Safety Information

Important Information

Read these instructions carefully and look at the equipment to become familiar with the device before trying to install, operate, service, or maintain it. The following special messages may appear throughout this manual or on the equipment to warn of potential hazards or to call attention to information that clarifies or simplifies a procedure.



The addition of either symbol to a “Danger” or “Warning” safety label indicates that an electrical hazard exists which will result in personal injury if the instructions are not followed.



This is the safety alert symbol. It is used to alert you to potential personal injury hazards. Obey all safety messages that accompany this symbol to avoid possible injury or death.

DANGER

DANGER indicates a hazardous situation which, if not avoided, **will result in** death or serious injury.

Failure to follow these instructions will result in death or serious injury.

WARNING

WARNING indicates a hazardous situation which, if not avoided, **could result in** death or serious injury.

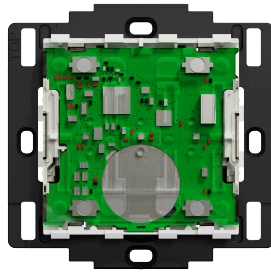
CAUTION

CAUTION indicates a hazardous situation which, if not avoided, **could result in** minor or moderate injury.

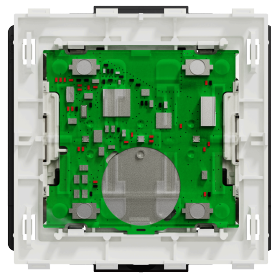
NOTICE

NOTICE is used to address practices not related to physical injury.

System M and System D- Connected Wireless Switch 1-gang/2-gang



MEG5001-0300 (System M)



MEG5001-6000 (System D)

For your safety

⚠ DANGER

HAZARD OF ELECTRIC SHOCK, EXPLOSION, OR ARC FLASH

While installing the device on a wall box or an existing switch outlet combination, always isolate the 230 V AC cables by applying an adhesive silver foil on the fixing plate.

Failure to follow these instructions will result in death or serious injury.

About the device

The Connected Wireless Switch 1-gang/2-gang (hereinafter referred to as **Wireless switch/ Free Located switch**) is a battery-powered wireless push button switch that is used to control a group of Zigbee devices (such as light/shutter) within the same Zigbee network.

The device can be configured through the Wiser Home app.

Advantage of using a Wireless switch:

- Easy to use and user-friendly interface: also good for children (placed lower on the wall) and for the elderly who may not be so familiar with smart phones.
- Easy to install on the wall: no wiring required.
- Easy to control in places where you wouldn't normally be able to install switches.

Features of a Wireless switch:

- Using the app, you can add various Actions (such as lighting/shutter control) to the Wireless switch.
- Using the app, you can add a Moment to the Wireless switch (such as Movie Night MOMENT/Good Night MOMENT).
- Low battery notification in the app.

NOTE:

- This device user guide shows pairing, configuration and other features of connected Wireless switch 2-gang. The same applies for connected Wireless switch 1-gang.
- Construction materials may cause interference which affect Hub-to-device and device-to-device distances. In the open air, there is no interference, so the distance can be much longer.
- Wireless switch can be used as part of Quick Home Connect room control solution.

Installing the device

Refer to the installation instruction supplied with this product.

Changing the device from 1-gang to 2-gang

You can change the Wireless switch mode from 1-gang to 2-gang before you pair your device to the **Hub/Gateway**.

NOTE: The Wireless switch is in 1-gang mode by default.

Follow the steps to change the mode:

1. Remove the 1-gang rocker from the module.

NOTICE

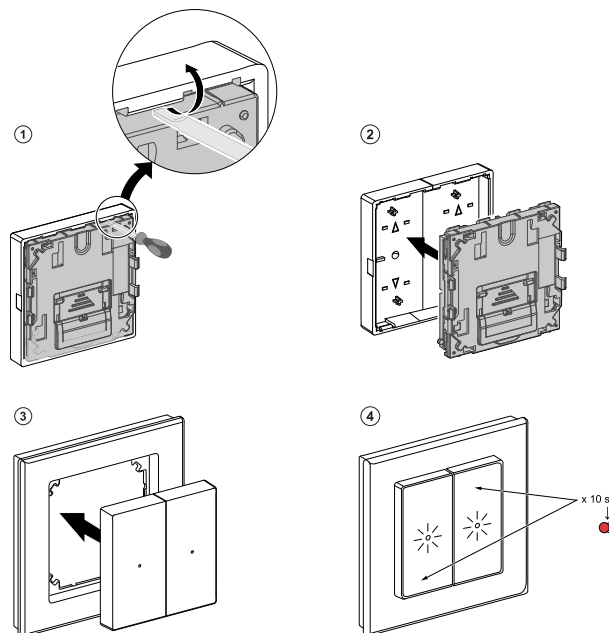
MODULE DAMAGE

The module is locked into the rocker. Use a screwdriver and carefully remove the rocker from the module.

Failure to follow these instructions can result in equipment damage.

2. Mount the 2-gang rocker on the module.
3. Insert the module into the frame from the front and ensure that it clicks into place.
4. Press and hold the top right and bottom left push button simultaneously for 10 seconds until the LED starts blinking red.

The red LED indicates the switching process. The Wireless switch is now changed to 2-gang mode.



NOTE: To change the mode back to 1-gang, reset the device, page 24 and replace with 1-gang rocker.

Quick Home Connect

Quick Home Connect is a wireless connectivity solution for Zigbee devices without the need for a Hub/Gateway or smartphone application. Quick Home Connect is your starting point for wireless home automation. It performs functions like switching, dimming and shutter control using the Connected Wireless Switch (hereinafter referred to as Wireless switch) via a Zigbee network.

The **Wireless switch** is a battery-powered wireless push-button switch that is used to control Zigbee devices (such as dimmer, shutter, switch, and socket) within the same Zigbee network.

Limitations

- Quick Home Connect serves only as a room control solution.
- With a 1-gang Wireless switch, you cannot mix lighting and shutter control. However, with a 2-gang Wireless switch, you can assign one gang for dimming/switching and the other for shutter control, or vice versa.
- This solution does not support remote control, smartphone app usage, or scheduling features.

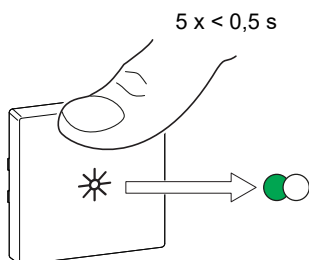
Pairing Wireless Switch with Devices

The following topics explain the pairing information for the micro module light switch, micro module shades control, multiwire micro module dimmer, socket outlet, and push-button module.

Micro Module Light Switch (Puck)

1. Short press the upper push button 5 times in quick succession on the Wireless switch.

The status LED blinks green.



2.

⚠ WARNING

HAZARD OF ELECTRIC SHOCK

- Observe the regulations for working on live parts.
- Only actuate the device buttons using insulated auxiliary equipment that meets the requirements of EN 60900.

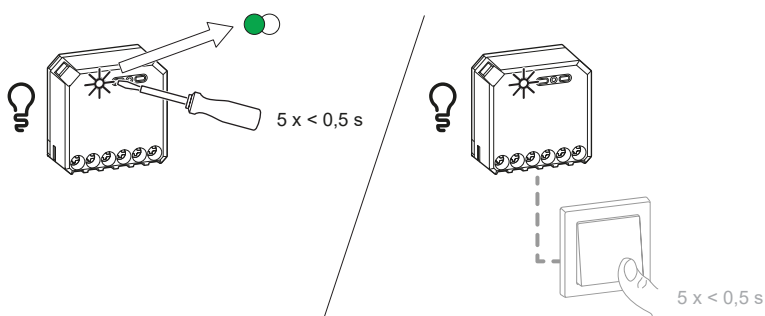
Failure to follow these instructions can result in death, serious injury, or equipment damage.

Follow either of the options to pair the Puck:

- Short press the Setup/Reset button 5 times in quick succession on the Puck.
- Short press the mechanical push button 5 times in quick succession.

The status LED blinks green on the Puck.

NOTE: If the Puck is located behind the mechanical push button, the status LED is not visible.

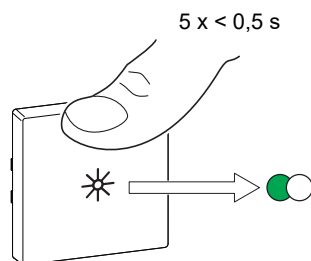


The light connected to the Puck blinks for a few times. The status LED stops blinking green on the Wireless switch and the Puck. The Puck can now be controlled by the Wireless switch.

Micro Module Shades Control (Puck)

1. Short press the upper push button 5 times in quick succession on the Wireless switch.

The status LED blinks green.



- 2.

⚠ WARNING

HAZARD OF ELECTRIC SHOCK

- Observe the regulations for working on live parts.
- Only actuate the device buttons using insulated auxiliary equipment that meets the requirements of EN 60900.

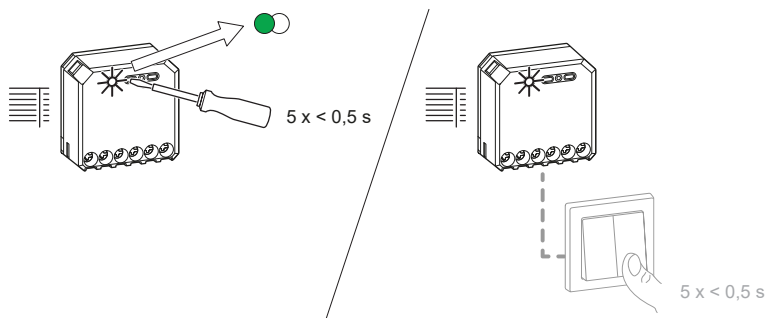
Failure to follow these instructions can result in death, serious injury, or equipment damage.

Follow either of the options to pair the Puck:

- Short press the Setup/Reset button 5 times in quick succession on the Puck.
- Short press the right mechanical push button for 5 times in quick succession.

The status LED blinks green on the Puck.

NOTE: If the Puck is located behind the mechanical double push button, the status LED is not visible.



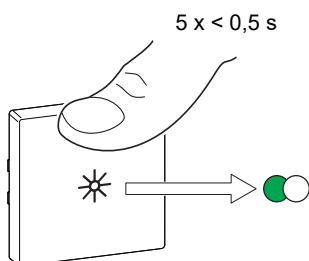
The shutter moves up and down for a few times. The status LED stops blinking green on the Wireless switch and the Puck. The Puck can now be controlled by the Wireless switch.

Multiwire Micro Module Dimmer

Prerequisites: While connecting the dimmer to the mechanical push buttons, make sure that the terminal 1 of the dimmer is wired to the left mechanical push button, and terminal 2 of the dimmer is wired to the right mechanical push button.

1. Short press the upper push button 5 times in quick succession on the Wireless switch.

The status LED blinks green.



2.

⚠ WARNING

HAZARD OF ELECTRIC SHOCK

- Observe the regulations for working on live parts.
- Only actuate the device buttons using insulated auxiliary equipment that meets the requirements of EN 60900.

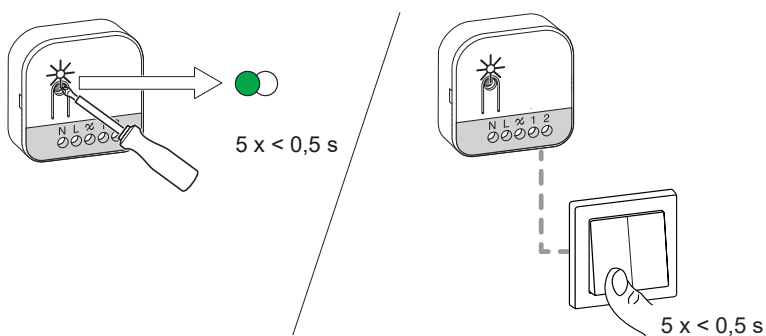
Failure to follow these instructions can result in death, serious injury, or equipment damage.

Follow either of the options to pair the Dimmer:

- Short press the Setup/Reset button 5 times in quick succession on the Dimmer.
- Short press the left push button (Wired to terminal 1) 5 times in quick succession.

The status LED blinks green on the Dimmer.

NOTE: If the Dimmer is located behind the mechanical push button, the status LED is not visible.

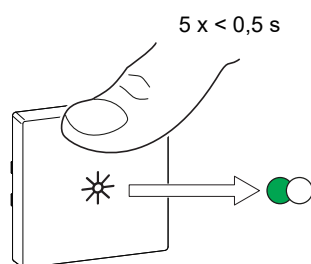


The light connected to the Dimmer blinks for a few times. The status LED stops blinking green on the Wireless switch and the Dimmer. The Dimmer can now be controlled by the Wireless switch.

Socket Outlet

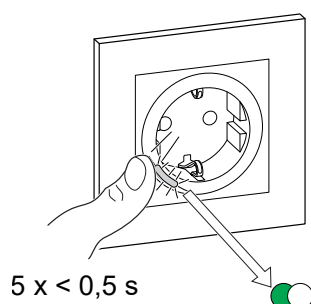
1. Short press the upper push button 5 times in quick succession on the Wireless switch.

The status LED blinks green.



2. Short press the push-button of the Socket Outlet 5 times in quick succession.

The status LED blinks green.

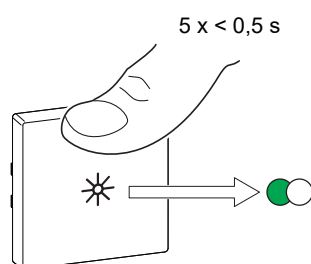


Upon successful pairing, the green LED on the Wireless switch and the Socket Outlet will stop blinking.

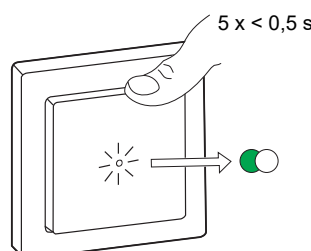
Push-button Module

1. Short press the upper push button 5 times in quick succession on the Wireless switch.

The status LED blinks green.



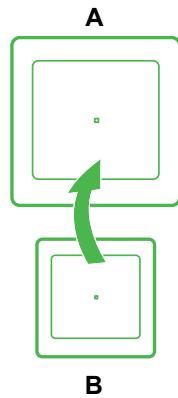
2. Short press the push-button module 5 times in quick succession.



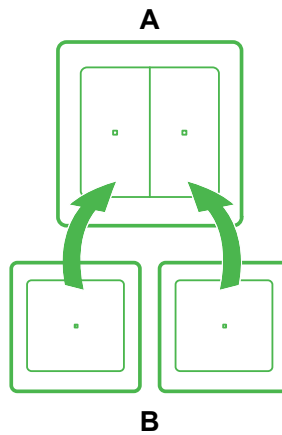
Upon successful pairing, the green LED on the Wireless switch and the push-button module will stop blinking. When the push-button module is connected to the relay or dimmer insert, the connected light blinks for a few times. Similarly, if the push-button module is connected to the shutter insert, the shutter moves up and down for a few times.

You can also use the following scenarios to pair a Wireless switch with a push-button module:

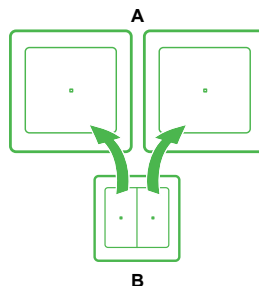
- **1-gang Wireless switch (B) with 1-gang push-button module (A):** Pair the Wireless switch with the push-button module.



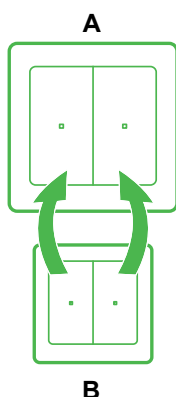
- **1-gang Wireless switch (B) with 2-gang push-button module (A):** Pair the Wireless switch with either the left or right push-button module. You can also pair another rocker of the push-button module with another Wireless switch.



- **2-gang Wireless switch (B) with 1-gang push-button module (A):** Pair either the left or right Wireless switch with the push-button module. You can also pair another rocker of the Wireless switch with another push-button module.



- **2-gang Wireless switch (B) with 2-gang push-button module (A):** Pair the left Wireless switch with either the left or right push-button module, or the right Wireless switch with either the left or right push-button module.

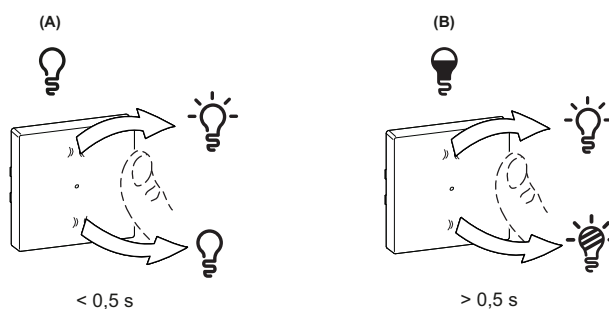


Using the Wireless switch in Quick Home Connect

Operating a Dimmer

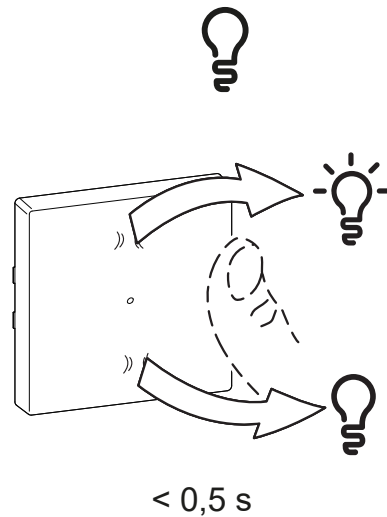
You can switch the dimmer ON/OFF and adjust its brightness using the paired Wireless switch.

- Short press the top or bottom of the Wireless switch ($< 0,5$ s) to turn ON/OFF the connected load (A).
- Long press the top or bottom of the Wireless switch ($> 0,5$ s) to increase or decrease the brightness of the connected load (B).



Operating a Relay Switch

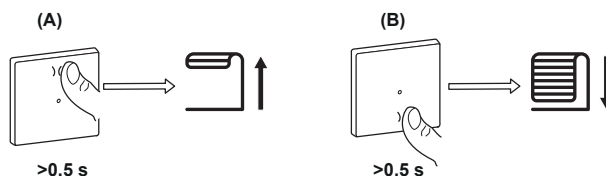
You can turn the light ON/OFF using the paired Wireless switch. Short press the top or bottom of the Wireless switch ($< 0,5$ s) to turn ON/OFF the light.



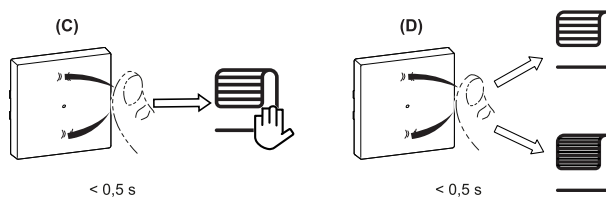
Operating a Shades Control

You can operate the shades control using the Wireless switch.

- Long press the Wireless switch ($> 0,5$ s) to move the shades control up or down.
 - Press to open the shades control (A)
 - Press to close the shades control (B)



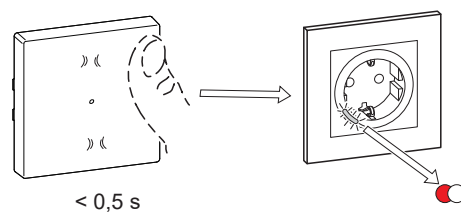
- Short press the top or bottom of the Wireless switch ($< 0,5$ s) to stop the moving shades control (C).
- Short press the top or bottom of the Wireless switch ($< 0,5$ s) to adjust the slat position (D).



Operating a Socket Outlet

Short press the top or bottom of the Wireless switch ($< 0,5$ s) to turn ON/OFF the socket.

The LED blinks red indicating that the socket outlet is turned On.



Operating a Push-button Module

Refer to the following topics for operating information with the Wireless switch:

- Operating a dimmer, page 14
- Operating a relay switch, page 14
- Operating a shades control, page 15

Resetting the Device in Quick Home Connect

It is necessary to reset the devices in the following scenarios:



- Unpair the device in Quick Home Connect:
- Refer to
 - Resetting the Wireless switch
 - Resetting the Micro module light switch
 - Resetting the Micro Module shades control
 - Resetting the Multiwire micro module dimmer
 - Resetting the Socket outlet
 - Resetting the Push-button module

When reset is done successfully. The Wireless switch and device returns to factory default.

- Integrating into Wiser System
 - If you wish to integrate the devices into Wiser System, reset all the devices in Quick Home Connect and refer to pairing the device with Wiser Hub/ Gateway.

LED Indications in Quick Home Connect

Pairing the device in Quick Home Connect

User Action	LED Indication	Status
Press the push button 5 times in quick succession.	LED blinks green, once per second. 	Pairing mode is active for 60 seconds. When pairing is completed, LED stops blinking. 

Troubleshooting in Quick Home Connect

Symptom	Possible cause	Solution
LED displays amber on the device.	Pairing not completed and returned to factory default.	Pair the Wireless switch and the device again. Refer to <ul style="list-style-type: none"> • Micro module light switch, page 9 • Micro module shades control, page 10 • Multiwire micro module dimmer, page 10 • Socket outlet, page 12 • Push-button module, page 12
Wireless switch not able to control the device reliably.	The Wireless switch and the device are too far away from each other.	Place the Wireless switch in a position closer to the device.

Symptom	Possible cause	Solution
	The Wireless switch lost pairing.	Pair the device again. Refer to <ul style="list-style-type: none"> • Micro module light switch, page 9 • Micro module shades control, page 10 • Multiwire micro module dimmer, page 10 • Socket outlet, page 12 • Push-button module, page 12
	The Wireless switch battery is discharged.	Replace the battery of the Wireless switch



Scenario	Procedure
Control multiple devices with one Wireless switch.	To control multiple devices with a single Wireless switch, start by pairing it with one device. Then, use the same Wireless switch to pair with additional devices. NOTE: You can pair up to 7 devices to a single Wireless switch.
1-gang FLS with devices (relay switch, dimmer, shutter control, or socket outlet).	Pair the Wireless switch with any of the devices (relay switch, dimmer, shutter control, or socket outlet).
2-gang FLS with devices (relay switch, dimmer, shutter control, or socket outlet).	Pair either left or right Wireless switch with any of the devices (relay switch, dimmer, shutter control, or socket outlet). You can also pair another rocker of the Wireless switch with another device.

Pairing the device with the Wiser Hub

Using the Wiser Home app, pair your Wireless switch with the **Wiser Hub** to access and control the Wireless switch.

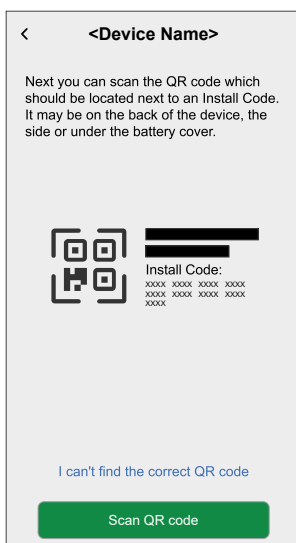
NOTE: You can change the Wireless switch from 1-gang to 2-gang during commissioning. If the Wireless switch is already configured to 1-gang and you want to change it to 2-gang, then reset the device (1-gang), refer to [Resetting the device](#), page 24 and commission it again with 2-gang.

To pair the Wireless switch:

1. On the **Home** screen, tap .
2. Tap **Devices** >  > **Appliances** > **1-gang Connected Wireless Switch / 2-gang Connected Wireless Switch** > **Next**.

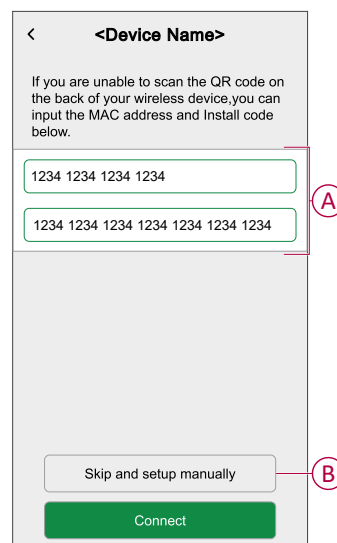
3. Tap **Scan QR code** and allow the Wiser Home app to access your camera. Then, scan the QR code located on the device.

NOTE: If you are unable to find the correct QR code, tap **I can't find the correct QR code** to pair the device manually and proceed to step 4.



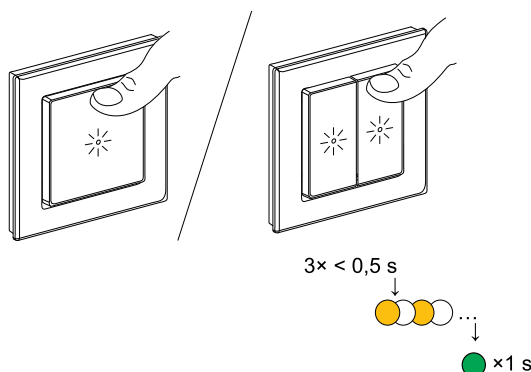
If the QR code is incorrect, a message **Incorrect QR code scanned** will appear. Tap **I can't scan the QR code** and choose one of the following options:

- **(A):** Enter the MAC Address and Install Code, then tap **Connect**. The app will verify if the MAC address and Install code are valid.
- **(B):** Tap this option if you are unable to find the MAC address and Install code.

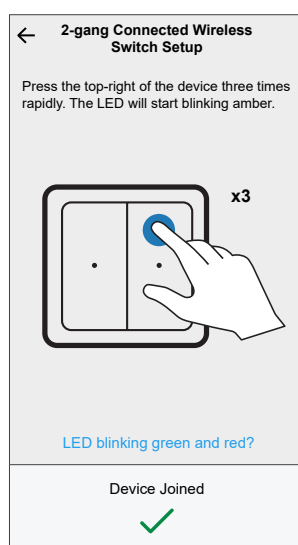


4. Tap **Next**, then short press the top-right push button 3 times on the 2-gang Wireless switch and make sure that the LED blinks amber.

TIP: In case of 1-gang Connected Wireless switch, short press the top-center push button 3 times.



Wait for a few seconds until the LED turns green and the app confirms that the device is joined.



NOTE: If the LED is blinking green and red, see the instructions by tapping **LED blinking green and red?** or refer to the [Troubleshooting](#), page 30 topic.



5. Tap **Next** to enter the name of the device and assign the device to a new room or an existing room.

The Wireless switch is now listed on the **Control** tab under the **All** and **Room** tabs.

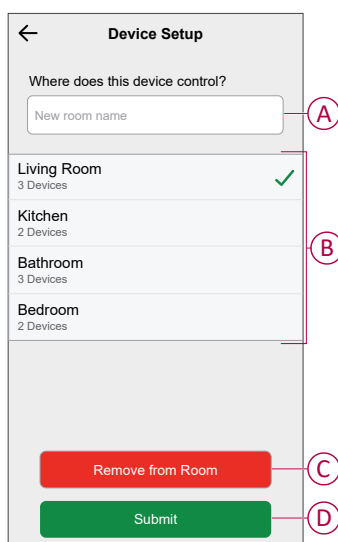
Configuring the device

Setting the device location

You can change the device location using Wiser Home app (such as bedroom, living room, dining room etc.).

1. On the **Home** screen, tap .
2. Tap **Devices**, select the device from the list for which you wish to change the location.
3. Tap **Location**  to open setup page.

- On setup page, you can enter **New room name** (A) or select an existing room from the list (B).



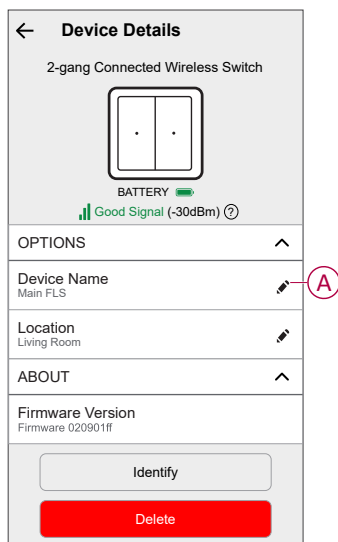
TIP: If the device is already assigned, you can remove it from the existing room. Tap **Remove from Room** (C).

- Once changes are done, tap **Submit** (D).

Renaming the device

Using the Wiser Home app, you can rename your Wireless switch.
Follow the step to rename the Wireless switch:

- On the **Home** screen, tap .
- Tap **Devices > 2-gang Connected Wireless Switch > Device Name** (A) to rename the Wireless switch.



Identifying the device

Using the Wiser Home app, you can identify a Wireless switch from the other available devices in the room.

Follow the steps below to identify the Wireless switch:

1. Press 3 times on all the Wireless switch available in the room.

TIP: Pressing 3 times on the Wireless switch, it wakes up for 1 minute.

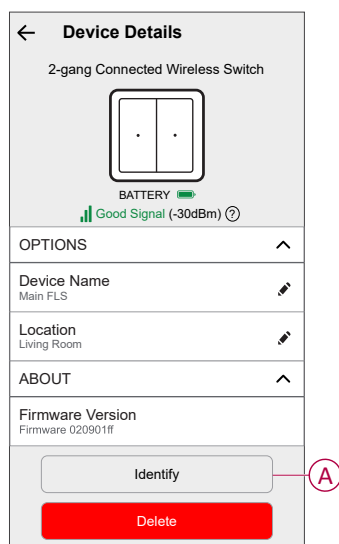
The Wireless switch LED blinks green 5 times and then stops.

2. On the **Home** screen, tap  **Devices > 2-gang Connected Wireless Switch > Identify (A)**.

NOTE:

- This feature flashes the Wireless switch LEDs, so you can identify the actual device. It may take up to a minute to start and flash the Wireless switch LED.
- The Wireless switch LED will continue to flash until you tap **OK**.


3. Check which Wireless switch LED starts blinking green.

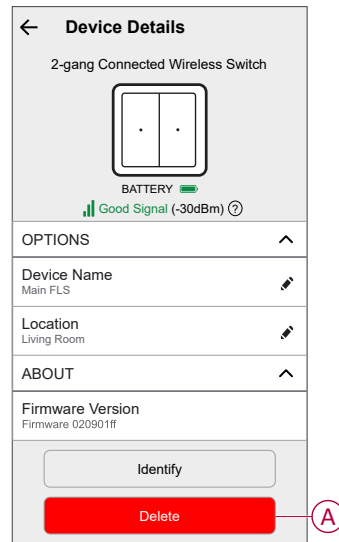


Removing the device from the system

Using the Wiser Home app, you can remove the Wireless switch from the Wiser system.

Follow the step to remove the Wireless switch:

1. On the **Home** screen, tap .
2. Tap **Devices > 2-gang Connected Wireless Switch > Delete (A)** and short press the top-right push button 3 times on the **Wireless switch** to activate the device.



NOTE: By removing the device, you will reset the device. If you still have a problem with the reset, then refer to reset the device, page 24.

Resetting the device

You can reset the Wireless switch to factory default manually. It can be reset manually at any time, e.g., when the Hub is replaced or when you are [Changing Wireless switch from 1-gang to 2-gang, page 7](#) or vice versa.

Follow the steps below to reset the Wireless switch:

1. Short press the top-right push button three times (< 0.5 s) and then press and hold the push button (> 10 s).

TIP: In case of the 1-gang Wireless switch, short-press the top-center push button three times (< 0.5 s) and then press and hold the push button (> 10 s).

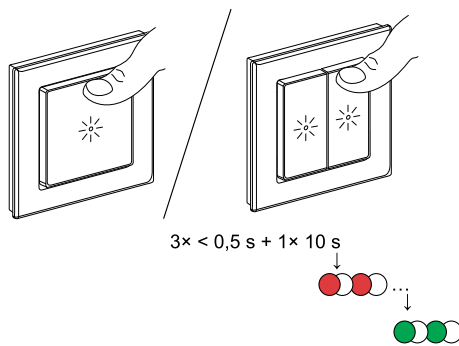
2. After 10 s, the LED starts blinking red, then release the push button.

The LED stops blinking upon successful reset of the device.

3. The Wireless switch restarts and blinks green for a few seconds.

NOTE:

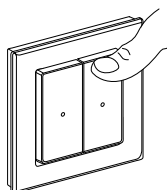
- After reset, the LED turns off to save the battery.
- All configuration data, user data, and network data are deleted.



Using the device

Switching operation

You can operate Wireless switch by pressing the push button manually.



Light

Short press on the upper/lower part of the push button for switching on or off, long press for dimming up or down.



Shutter

Long press on the upper/lower part of the push button to drive the shutter up or down.



Moment

Short press the push button to activate a Moment.

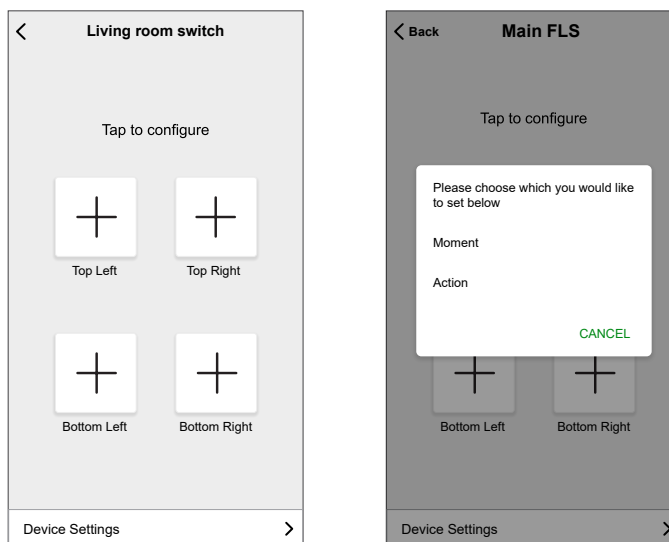
TIP: You can configure Wireless switch push button with Action/Moment using the app.

Assigning an Action to a Push Button

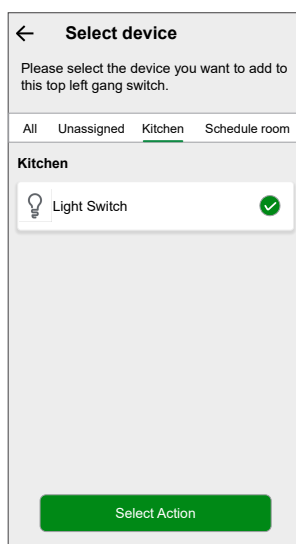
Using the Wiser Home app, you can configure an Action to the Wireless switch push button (such as switching light On/Off, shutter up or down).


Follow the steps below to configure an Action to the Wireless switch push button:

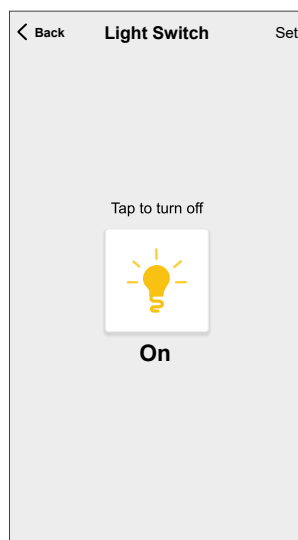
1. On the **Control** tab, tap **All** devices or the room tab where the Wireless switch is located.
2. Tap any below listed switch to configure and select **Action**.



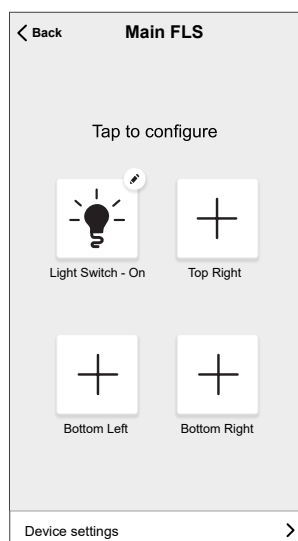
3. Select the device which you want to add as an Action.
For example, the **Top Left** switch push button is configured with Action: Light Switch On.
4. On the **Select device** page, select the **Light Switch** and tap **Select Action**.



5. Tap  to turn On the light and tap **Set > Set Action**.



TIP: In the next screen, ✓ shows the Action is successfully configured. You can see the Top Left switch push button is configured with Light Switch: On.

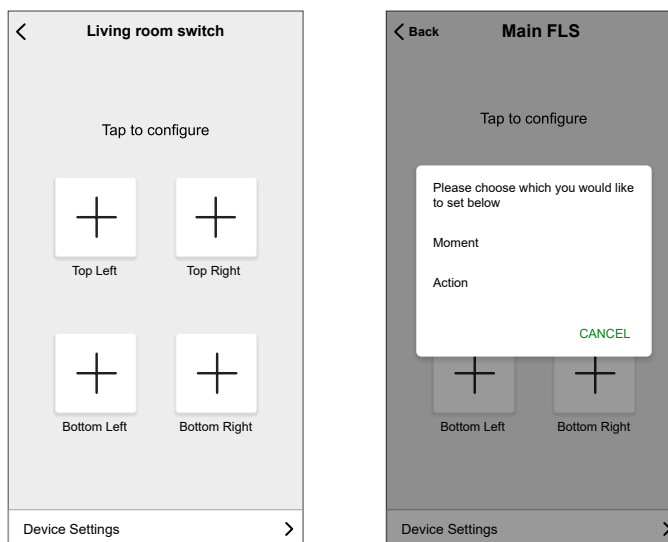


Assigning a Moment to the Push Button

Using the Wiser Home app, you can configure a Moment to the Wireless switch push buttons (such as Good Night Moment: Fan on, light dimming 50%, shutter close).

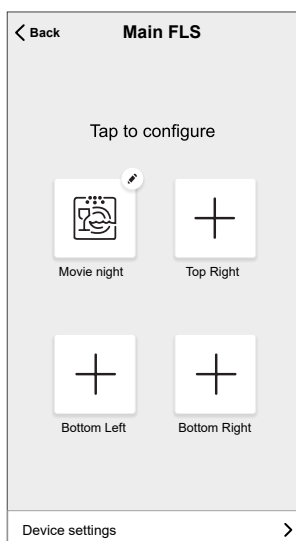
Follow the steps below to configure a Moment to the Wireless switch push button:

1. On the **Control** tab, tap **All** devices or the room tab where the Wireless switch is located.
2. Tap any below listed switch and select **Moment**.



3. Select a Moment which you want to add to the push button and tap **Select Moment**.

TIP: In the next screen, ✓ shows the Moment is successfully configured. For example, the **Top Left switch** is configured with Moment: Movie Night.

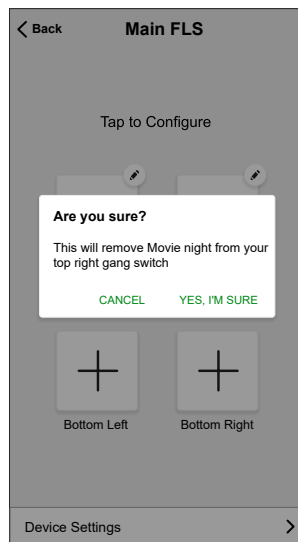


Removing configured Action/Moment

Using the Wiser Home app, you can remove the existing configured Action or Moment from the Wireless switch push-button.

Follow the steps below to remove the configured Action/Moment:

1. On the **Control** tab, tap **All** devices or the room tab where the Wireless switch is located.
2. Tap push button and tap **Action / Moment >Remove > Yes I'm confirm** to remove configured Action/Moment from the Wireless switch push button.



Replacing the battery

Replace the device battery when the level is low or critically low. The battery level can be seen in the app.

Follow the steps to replace the battery from the device:

⚠ WARNING

CHEMICAL BURN HAZARD

Keep batteries out of reach of children. If swallowed, seek immediate medical attention.

Failure to follow these instructions can result in death, serious injury, or equipment damage.

NOTICE

EQUIPMENT DAMAGE

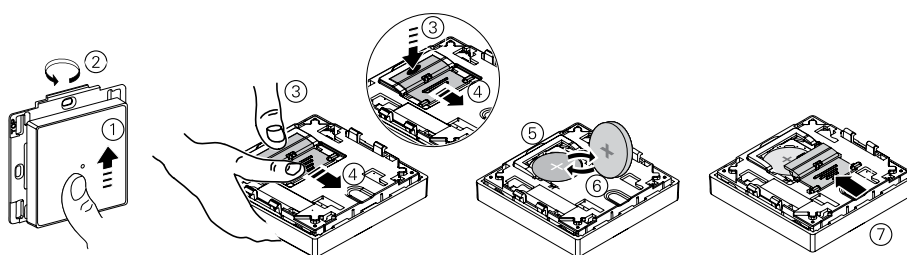
The device is locked on the fixing plate with retaining claws. Never pull the device before sliding it upwards.

Failure to follow these instructions can result in equipment damage.

1. Remove the device from the fixing plate by sliding it upwards.
2. Rotate the device by 180° to access the battery cover.
3. Press and hold the battery cover with your thumb.
4. Slide the battery cover with another thumb to remove.
5. Remove the old battery and press any push button on the device for a few seconds.



NOTE: Dispose the used batteries, as per statutory regulations.

6. Insert the battery with plus (+) symbol facing outward
7. Secure the battery cover.





LED indications


Pairing the device

User Action	LED Indication	Status
Press the top right push button 3 times	LED blinks orange, once per second. 	Pairing mode is active for 30 seconds. When pairing is completed, LED displays solid green for a few seconds, before turning Off. 

Resetting the device

User Action	LED Indication	Status
Press the push button 3 times and hold it down once for > 10 s.	LED blinks red, once per second. 	The device is in reset mode. The device then restarts and the LED starts blinking green, before turning Off. 

Battery level

LED Indication	Status
LED blinks red once, when a push button is pressed. 	The battery is low (< 10%), Replace the Wireless switch battery, page 29. NOTE: A notification pop-up will appear on the app.

Troubleshooting

Symptom	Possible cause	Solution
LED blinks red.	The Wireless switch battery is low or drained.	Replace the Wireless switch battery, page 29. NOTE: A notification pop-up will appear on the app.
The Wireless switch displays offline in the app.	The Wireless switch battery is low or drained.	Replace the Wireless switch battery, page 29.
	The Wireless switch is disconnected from the network.	Press any push button on the Wireless switch. NOTE: The first press does not trigger Wireless switch operation.

Technical Data

Battery	CR2032
Battery life	Up to 5 years (depending on frequency of use and quality of battery)
IP rating	IP20
Operating frequency	2405-2480 MHz
Max. radio-frequency power transmitted	<10 mW
Range	100 m open space
Operating temperature	-5 °C to 45 °C
Relative humidity	5% to 95%
Communication protocol	Zigbee 3.0

Compliance

Product Environmental Data

Find and download comprehensive environmental data about your products, including RoHS compliance and REACH declarations as well as Product Environmental Profile (PEP), End-of-Life instructions (EOLi) and much more.

<https://www.se.com/myschneider>



General information about Schneider Environmental Data Program

Click the link below to read about Schneider Electric's Environmental Data Program.

<https://www.se.com/ww/en/about-us/sustainability/environmental-data-program/>



Trademarks

This guide makes reference to system and brand names that are trademarks of their relevant owners.

- Zigbee® is a registered trademark of the Connectivity Standards Alliance.
- Apple® and App Store® are brand names or registered trademarks of Apple Inc.
- Google Play™ Store and Android™ are brand names or registered trademarks of Google Inc.
- Wi-Fi® is a registered trademark of Wi-Fi Alliance®.
- Wiser™ is a trademark and the property of Schneider Electric, its subsidiaries and affiliated companies.
- Amazon Alexa™ is a trademark of AMAZON TECHNOLOGIES, INC.
- Google Home™ is a trademark of Google INC.

Other brands and registered trademarks are the property of their respective owners.

Schneider Electric
35 rue Joseph Monier
92500 Rueil Malmaison
France

+ 33 (0) 1 41 29 70 00

www.se.com

As standards, specifications, and design change from time to time, please ask for confirmation of the information given in this publication.

© 2021 – 2025 Schneider Electric. All rights reserved.

DUG_System M and System D - Wireless Switch_WH-05