

# Finishing set for single switch or push button, anthracite coated

**220-61105**

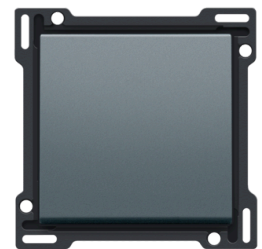


This finishing set is used in the installation of a single-pole, double-pole, two-way or intermediate switch or for a push button. It is suitable for a switch or push button used to control one light point. Colour: anthracite coated.

## Technical data

Finishing set for single switch or push button, anthracite coated.

This central plate is surrounded with a flat edge that is equipped at all 4 corners with a rectangular opening, each containing a multi-positional snap hook. The construction of the central plate ensures that the faceplate can always be attached flat to the wall, even in cases of untidy plasterwork. This works in two directions: If the flush-mounting box sticks out of the plasterwork, the multi-positional snap hooks can compensate for a 1 to 1.2 mm margin; if the flush-mounting box is sunk too deeply in the plasterwork, the snap hooks can compensate for up to a 1.8 mm margin. The flat edge around the central plate also has 4 round openings that ensure the correct positioning of the faceplate in relation to the central plate. After mounting all components (faceplate, finishing set and switch), no metal parts are visible thanks to the flat edge of the central plate.



- Function: the key and the intermediate plate (board) form one unit
- Material finishing: polycarbonate (PC) + acrylic-styrene-acrylate (ASA)
- Type of control: pull cord
- Colour: anthracite coated
- Colour RAL (approximately): 7022
- Colour NCS (approximately): NCS S 7502-R
- Surface treatment: coated
- Number of lenses: 0
- Dismantling method: remove the screw, push the pull module upward and lift it up by inserting a slotted screwdriver in the notch of the central plate. The notch is indicated with a screwdriver symbol and an arrow
- Minimum ambient temperature: 5 °C
- Maximum ambient temperature: 40 °C
- Protection degree: the combination of a mechanism, a central plate and a faceplate has a protection degree of IP31D
- Impact resistance: the combination of a mechanism, a central plate and a faceplate has an impact-resistance of IK06
- Fire safety:

- all plastic components are self-extinguishing (comply with a filament test of 650°C)
- all plastic components are halogen-free
- Dimensions of finishing with flat edge: 56 x 56 mm (HxW), dimensions of visible area of finishing: 45 x 45 mm (HxW)
- Dimensions (HxWxD): 55.8 mm x 55.8 mm x 19.5 mm
- Certification marks: CEBEC, DEMKO, NF, KEMA, ÖVE, SEMKO, VDE
- Marking: CE