



### Features

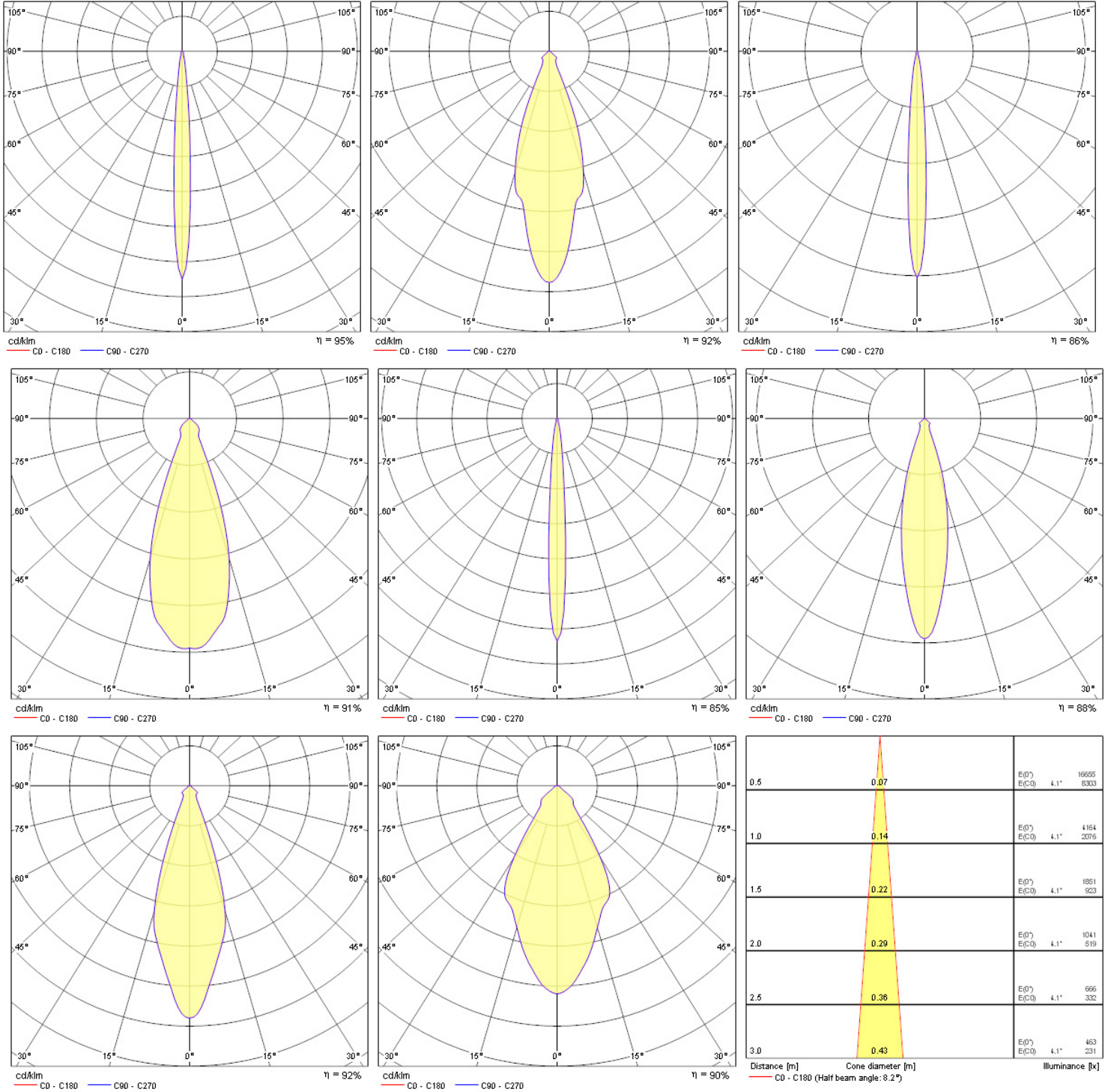
- INSTAR TREND SW IP44 INDOOR BA



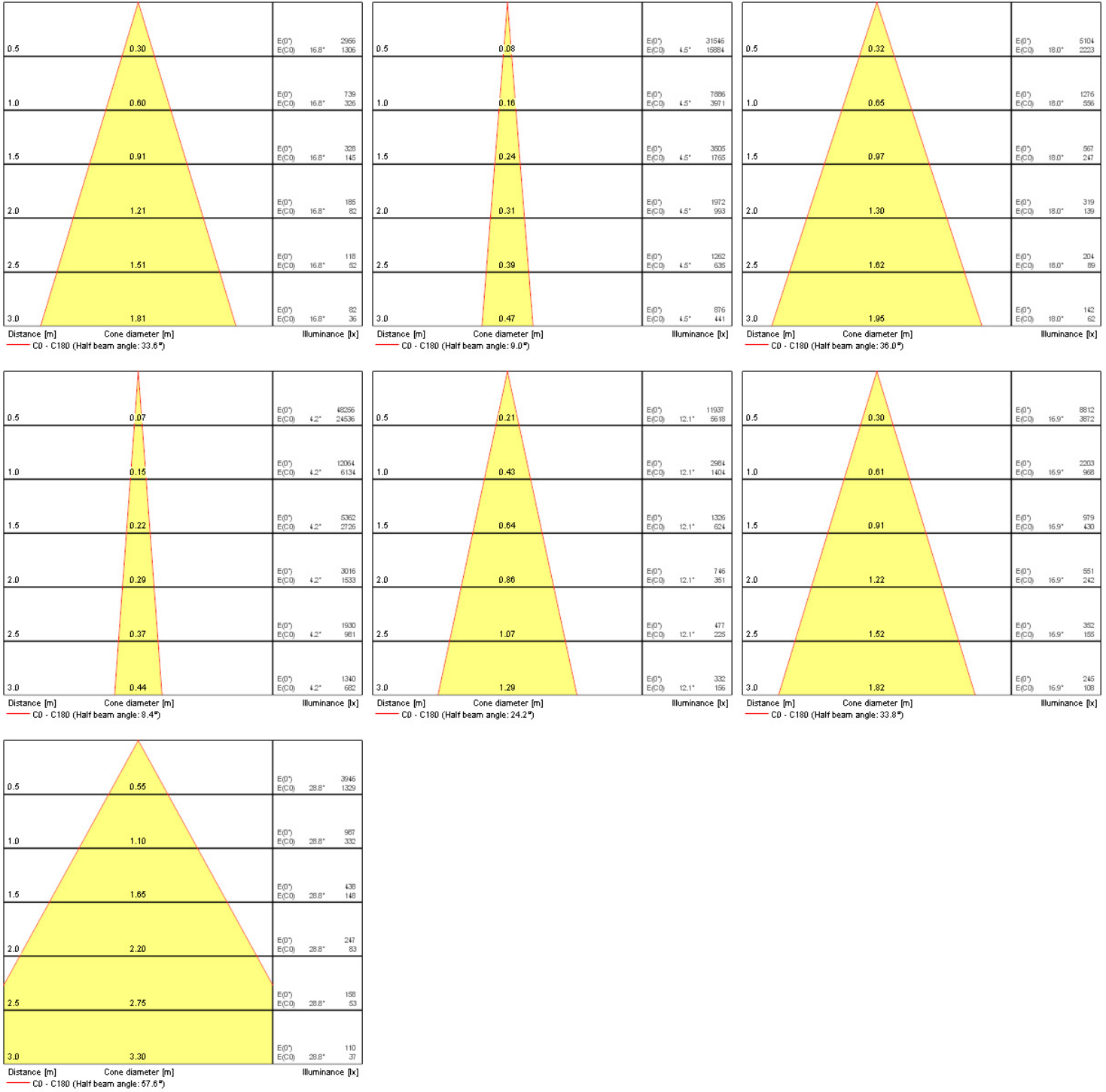
### Product Overview

Product name	INSTAR TREND SW IP44 INDOOR BA
Technology	Accessory
Cap/Base	GX5.3
Housing	Aluminium
Mount	Ceiling recessed mounting
Light source included	Fixture without Lightsource
Environment	Indoor
E-number FI	4274924
E-number SE	7461924
LOR (%)	Dependent on lamp
Electrical protection	Class III
Control gear mounting	Remote
Housing colour	Aluminium
IP rating	IP44/20
IK rating	IK02
Product EAN number	8711971790617
Warranty	3 years

### Photometry



## INSTAR TREND SW IP44 INDOOR BA 3079061



### Data table

## INSTAR TREND SW IP44 INDOOR BA 3079061

### GENERAL DATA

Product name	INSTAR TREND SW IP44 INDOOR BA
Technology	Accessory
Cap/Base	GX5.3
Housing	Aluminium
Mount	Ceiling recessed mounting
Environment	Indoor
E-number FI	4274924
E-number SE	7461924
Warranty	3 years

### OPTICAL DATA

LOR (%)	Dependent on lamp
Adjustable chromaticity	N

### ELECTRICAL DATA

Light source included	Fixture without Lightsource
Primary Supply/Product voltage - min (V)	12
Electrical protection	Class III
Control gear required	No
Control gear mounting	Remote
Glow Wire Test (°C)	850
Nominal Frequency (Hz)	50/60Hz

### PHYSICAL DATA

Housing colour	Aluminium
IP rating	IP44/20
IK rating	IK02
Max. Lamp Diameter (mm) - D	95
Weight (kg)	0.155
Recessed Depth (mm)	90

## PACKAGING

---

Single packaging type	Carton
Product EAN number	8711971790617
Packaging single width (cm)	10.0
Packaging single depth (cm)	8.4
DUN14 (outer)	18711971790614
Packaging outer length / height (cm)	28.4

## SAFETY DATA

---

Special purpose lamp	No
Dry applications use only	No
Suitable for household illumination	No