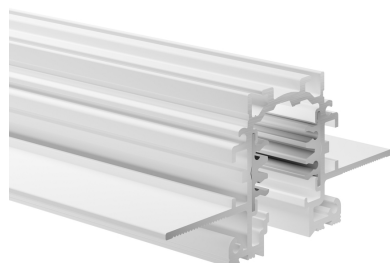


Concord

LYTESPAN TRIMLESS RECESSED 1M WHITE 9000-1/W-TR 2070246



Features

- Lytespan Trimless Recessed - 3 circuit track + 2 circuit control L1/L2/L3/Neutral/ground 16A/440V + D+/D- 2x1A/50V FELV AC, DALI, DMX, 1-10V etc. compatible, circuits can be controlled individually, aluminum body, suitable for trimless recessed installation, 1000 x 92 x 42.8 mm (L x W x H), white (RAL 9010). Please check compatible adaptor list.

Product Overview

Product name	LYTESPAN TRIMLESS RECESSED 1M WHITE 9000-1/W-TR
Technology	Accessory
Housing	Aluminium
Mount	Ceiling recessed mounting, Wall recessed
General application	Hospitality, Museums & Galleries, Office
ETIM Class	EC000101
Electrical protection	Class I
Housing colour	RAL 9010 - Pure white
Product EAN number	5025768702466
Warranty	5 years

Concord

LYTESPAN TRIMLESS RECESSED 1M WHITE 9000-1/W-TR
2070246

Technical drawings

