

# Concord

## ROUTELED II OPEN AREA DALI 2059461



### Features

- Miniature self-test (DALI) emergency recessed luminaire downlight with open area optic, non-maintained 3 hr emergency, standalone unit with inverter module and rechargeable battery (NiMH), quick and easy installation with inverter module and battery pack contained in articulated case that can pass through 40mm cutout, 219lm, 3W, IK07, beam angle 148 degrees, 230V, 50-60Hz, recharge period 24 hours, Power Factor 0.45, charge current 300mA, LxWxD (mm) 416x29x26.

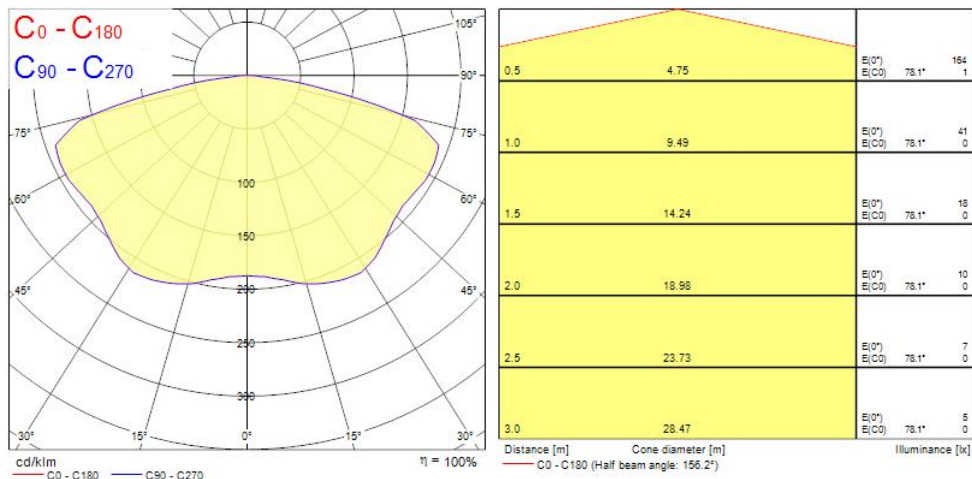
### Product Overview

|                                 |                                  |
|---------------------------------|----------------------------------|
| Product name                    | ROUTELED II OPEN AREA DALI       |
| Technology                      | LED                              |
| Housing                         | Aluminium                        |
| Mount                           | Ceiling recessed mounting        |
| Fixture luminous flux (lm)      | 219                              |
| LOR (%)                         | 100                              |
| Colour temperature (K)          | 5000                             |
| Light colour                    | Cool White                       |
| CRI (Ra)                        | 70                               |
| Colour Consistency (SDCM)       | 5                                |
| Colour Variation Initial (SDCM) | 5                                |
| Photobiological Risk Group      | RG0                              |
| Luminous flux (emergency) (lm)  | 219                              |
| Electrical protection           | Class II                         |
| Housing colour                  | RAL 9016 - Traffic white / Bezel |
| IP rating                       | IP20                             |
| IK rating                       | IK07                             |
| Product EAN number              | 5025768594610                    |
| Warranty                        | 5 years                          |

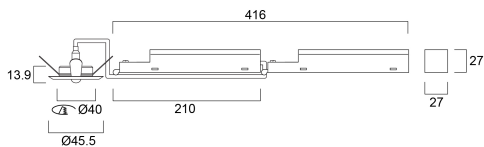
# Concord

## ROUTELED II OPEN AREA DALI 2059461

### Photometry



### Technical drawings



### Data table

#### GENERAL DATA

|   |                            |
|---|----------------------------|
| <b>Product name</b>                     | ROUTELED II OPEN AREA DALI |
| <b>Technology</b>                       | LED                        |
| <b>Housing</b>                          | Aluminium                  |
| <b>Mount</b>                            | Ceiling recessed mounting  |
| <b>Operating temperature range (°C)</b> | 0°C...+35°C                |

# Concord

## ROUTELED II OPEN AREA DALI 2059461

|   |         |
|---|---------|
| Performance ambient temperature Tq (°C) | 25      |
| Warranty                                | 5 years |

### OPTICAL DATA

|                                 |            |
|---------------------------------|------------|
| Fixture luminous flux (lm)      | 219        |
| LOR (%)                         | 100        |
| Colour temperature (K)          | 5000       |
| Light colour                    | Cool White |
| CRI (Ra)                        | 70         |
| Colour Consistency (SDCM)       | 5          |
| Colour Variation Initial (SDCM) | 5          |
| Photobiological Risk Group      | RG0        |
| Luminous flux (emergency) (lm)  | 219        |
| Emergency duration (h)          | 3          |

### ELECTRICAL DATA

|  |          |
|--|----------|
| Primary Supply/Product voltage - min (V) | 230      |
| Electrical protection                    | Class II |
| Control gear required                    | No       |
| Drive current (mA)                       | 200      |
| Glow Wire Test (°C)                      | 850      |
| Nominal Frequency (Hz)                   | 50/60Hz  |

### PHYSICAL DATA

|                             |                                  |
|-----------------------------|----------------------------------|
| Housing colour              | RAL 9016 - Traffic white / Bezel |
| IP rating                   | IP20                             |
| IK rating                   | IK07                             |
| Nominal Product Length (mm) | 416                              |
| Weight (kg)                 | 0.948                            |
| Recessed Depth (mm)         | 80                               |

### PACKAGING

# Concord

## ROUTELED II OPEN AREA DALI 2059461

---

|                                      |               |
|--------------------------------------|---------------|
| Single packaging type                | Carton        |
| Product EAN number                   | 5025768594610 |
| Packaging single width (cm)          | 18.0          |
| Packaging single depth (cm)          | 11.0          |
| Packaging outer length / height (cm) | 21.0          |

### SAFETY DATA

---

|                                     |    |
|-------------------------------------|----|
| Special purpose lamp                | No |
| Dry applications use only           | No |
| Suitable for household illumination | No |