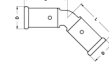


27PK-4040: Bend 45° 40x40



Commercial information

PVDF press fittings in combination with multilayer pipe, a completely corrosion-free system. The synthetic press fittings are made from injection moulded PVDF (Polyvinylidene fluoride)*. PVDF offers the user a unique combination of properties:

- Highly resistant to pressure and temperature
- Excellent mechanical strength
- Extreme flexibility: bending up to 10° is possible
- Perfectly suited for drinking water and food
- Highly resistant to chemicals and corrosion
- Embedding is possible without extra protection

Basic unit dimensions

Height	47 mm
Length	120 mm
Width	83 mm
Net weight	0.155 kg

Certificates

ATG, QB (CSTBat), DVGW Wasser, ETA, KIWA, ÖVGW Wasser, SINTEF, WRAS, KOMO, STF, ÖN EN 21003-2/-3, GOST-R, ITC, TSU, AFNOR, PZH, ACS, DNV-GL, Aenor, Sans 21003, RISE, EMI

Applications

Potable water, Heating, Compressed air, Cooling, Demi Water, Sanitary

Solutions

Building installations, Industry, Utility, Shipbuilding

Technical characteristics

Material	Plastic	Outer pipe diameter connection 1	40 Millimetre
Material connection 1	Polyvinylidene fluoride (PVDF)	Wall thickness, connection 1	0.9 Millimetre
Material quality	Polyvinylidene fluoride (PVDF)	Outer pipe diameter connection 2	40 Millimetre
Material quality connection 1	Polyvinylidene fluoride (PVDF) (expired)	Wall thickness, connection 2	0.9 Millimetre
Surface protection connection 1	Untreated	Zeta value	0.761
Surface treatment connection 1	Untreated	Length	119.5 Millimetre
Material connection 2	Polyvinylidene fluoride (PVDF)	Length of connection 1	60.5 Millimetre
Material quality connection 2	Polyvinylidene fluoride (PVDF) (expired)	Working length connection 1	24.5 Millimetre
Surface protection connection 2	Untreated	Length of connection 2	60.5 Millimetre
Surface treatment connection 2	Untreated	Working length connection 2	24.5 Millimetre
Shape	Bend	Wrench width	0 Millimetre
Reducing	✘	Wrench width union nut	0 Millimetre
Eccentric	✘	Medium temperature (continuous)	-10 70 Degrees celsius
System specific	✓	Max. operating pressure at 20 °C	10 Bar
Connection 1	Press sleeve	Standard Dimension Ratio (SDR)	0
Contour code connection 1	BE		
Connection 2	Press sleeve		
Contour code connection 2	BE		
Main colour fitting	Black		
Material sealing	Ethylene-propylene diene monomer rubber (EPDM)		
With buffer stud	✓		
High tensile strength	✘		
With thermal insulation	✘		
Ring stiffness class	Other		
With sealing rings/gaskets	✓		
Capped	✘		
With drain valve	✘		
With de-aerator	✘		
FM quality mark	✘		
LPCB quality mark	✘		
ULC quality mark	✘		
UL quality mark	✘		
DIN-CERTCO certificate	✘		
VdS quality mark	✘		
With approval for TÜV	✘		
DVGW quality mark for gas	✘		
DVGW quality mark for water	✓		
KIWA certified	✓		
Gastec QA mark	✘		
KOMO certified	✓		
Type approval according to BBR/EKS	✘		