

Ethernet-enabled, reliable and accurate energy metering

PowerLogic™ EM3570 series



Engineered on the trusted PowerLogic platform, Ethernet-enabled EM3570 DIN rail meters are designed to install easily and integrate seamlessly with existing BACnet/IP and Modbus TCP/IP networks common in today's building and power management systems. With wide range CT compatibility, high reliability with Class 0.5 accuracy, IEC61557-12 compliance, as well as ASHRAE 90.1 for power and energy logging capability, EM3570 meters support the energy efficiency designs of most buildings and are ideally suited to energy cost management applications.

Simple and smart

- Ethernet-enabled for easy integration with building or power management systems
- Bi-directional energy for measuring energy consumed and energy exported for renewable applications
- Backlit LCD display for easy and accurate readings
- Supports multiple languages

Reliable and accurate

- Accuracy class 0.5 for active energy metering
- Data logging records 16 meter parameters in internal memory
- Longer historical records for easier benchmarking and trending

Efficient operation

- Comprehensive electrical parameters (I, In, U, V, PQS, E, PF, Hz) help monitor network balance and overload behavior
- Total and per phase kWh helps discover consumption behavior
- Reactive Energy accuracy of 2% (IEC 61557-12) as well as Accumulated Reactive Energy (kVARh) for each phase, for each quadrant and total per quadrant

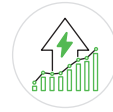
Applications



Energy monitoring in building automation systems



Renewable energy



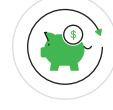
Energy management



Commercial sub-metering



Industrial monitoring



Cost allocation

PowerLogic™ EM3570 series energy metering

Adapts for agile and efficient operations without adding complexity

Features

Open, robust communications

- Ethernet protocol and daisy-chain functionality with two RJ45 connectors at 10/100 Mbps
- Supports https, SNMP, DHCP, Modbus TCP/IP, BACnet/IP
- Easy remote management through web/mobile devices

Easy installation

- DIN-mounted form factor option for easy, plug-in installation
- Industry standard Modbus register and BACnet object list
- Two digital inputs, one relay output

ASHRAE 90.1 compliant data logging

- 2 GB capacity power and energy data logging in 15-minute increments over a 36 month period
- Wide CT compatibility: LVCTs (0.333V and 1V), and Rogowski Coils (5000 A)

High reliability

- IEC 61557-12 standards with capacity to measure up to 600VAC

Cybersecurity

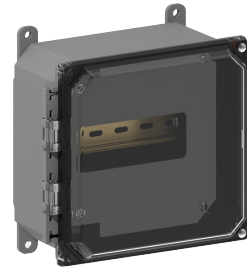
- IEC 62443 SL1
- California 2020

BTL-certified BACnet communication

- Conformance based on independent testing

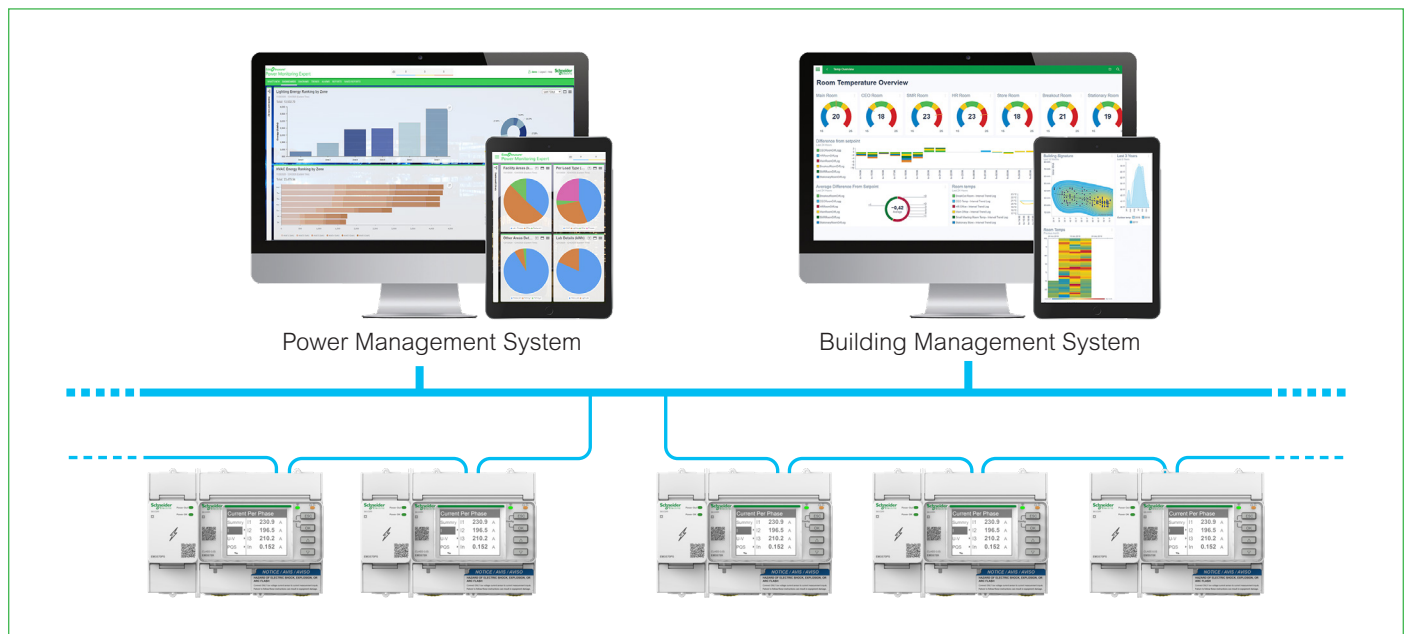


PowerLogic EM3570 Ethernet-enabled meters are an integral part of EcoStruxure™ solutions, helping to maximize your energy and operational efficiency.



Available with NEMA 4X enclosure, equipped with DIN rail mounting hardware for convenient installation and protection from the elements.

Architecture overview



Supports https, SNMP, DHCP, Modbus TCP/IP, BACnet/IP protocols.

Schneider Electric

135 Rue Joseph Monier,
92500 Rueil-Malmaison, France

www.schneider-electric.com

November 2024

Life Is On

Schneider
Electric