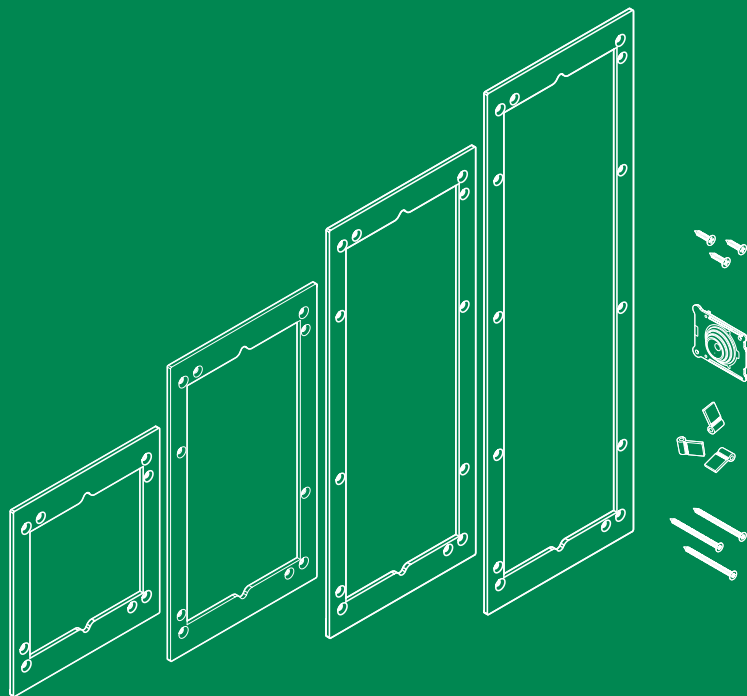


ITMANUALE
TECNICO**EN**TECHNICAL
MANUAL**FR**MANUEL
TECHNIQUE**NL**TECHNISCHE
HANDLEIDING**DE**TECHNISCHES
HANDBUCH**ES**MANUAL
TÉCNICO**PT**MANUAL
TÉCNICO**RU**ТЕХНИЧЕСКОМУ
РУКОВОДСТВУ**TR**TEKNIK
KILAVUZU**PL**INSTRUKCJA
TECHNICZNA

Kit fissaggio su cartongesso. 1-4 moduli Ultra
Kit for installation to plasterboard. 1-4 Ultra modules

Kit de fixation sur placoplâtre. 1-4 modules Ultra
Bevestigingskit voor gipswand. 1-4 modules Ultra

Befestigungskit auf Gipskarton. 1-4 Ultra-Module

Kit de fijación en pladur. 1-4 módulos Ultra

Kit de fixação em pladur. 1-4 módulos Ultra

Комплект для крепления на гипсокартон. 1-4 модуля Ultra

Alçı panel üzerine sabitleme kiti. 1-4 Ultra modülü

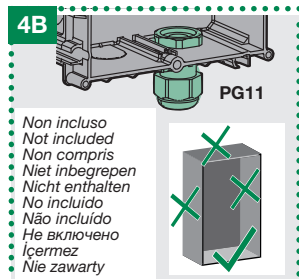
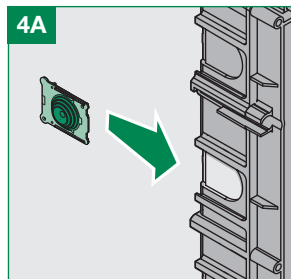
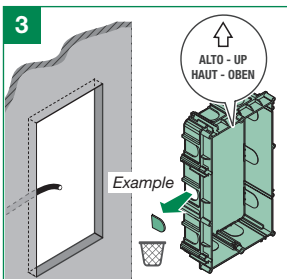
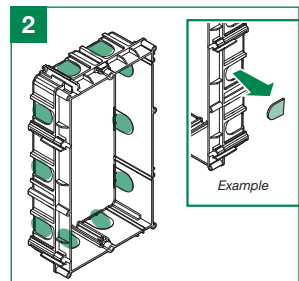
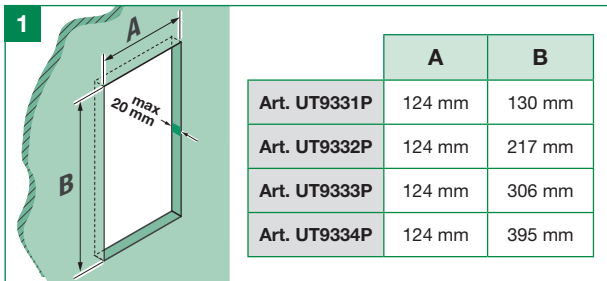
Zestaw do montażu na płycie kartonowo-gipsowej. 1-4 moduły Ultra

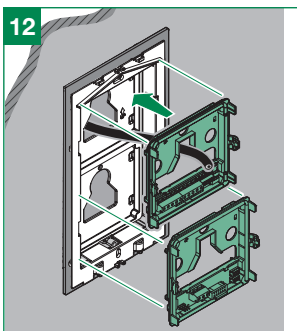
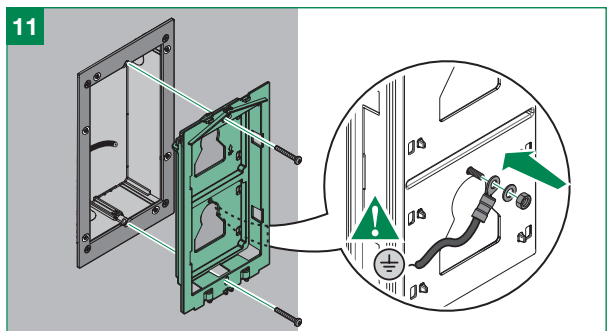
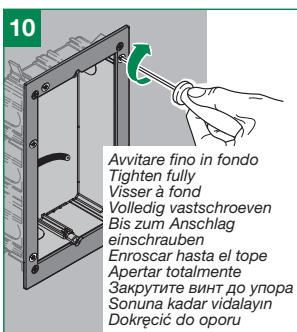
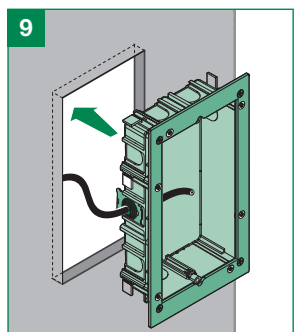
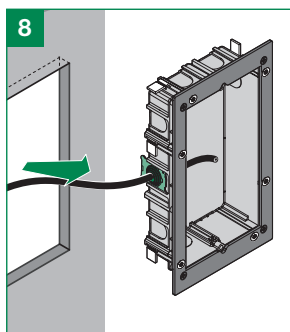
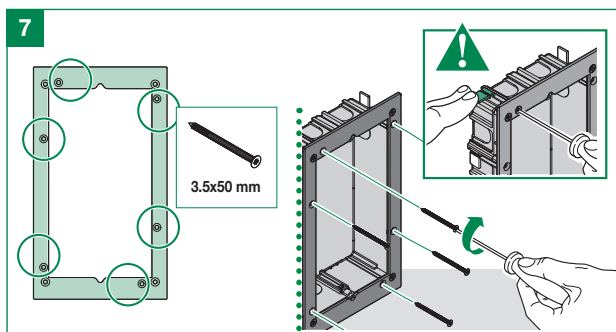
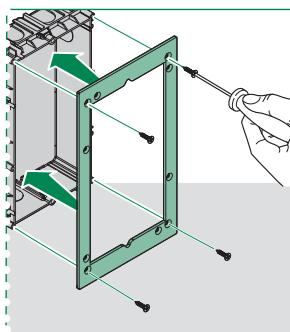
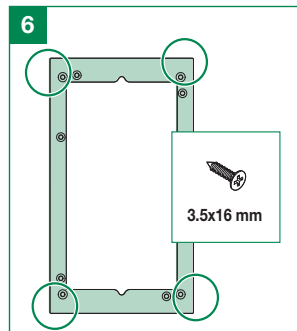
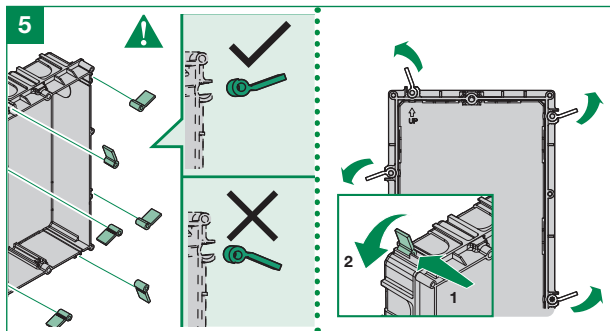
Art.**UT9331P****UT9332P****UT9333P****UT9334P**

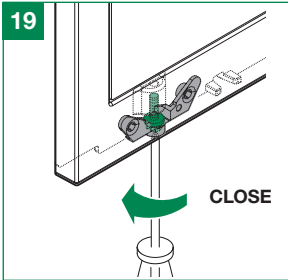
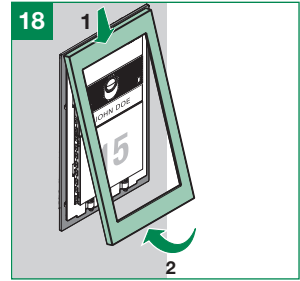
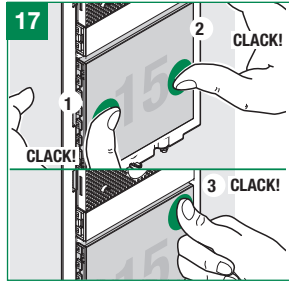
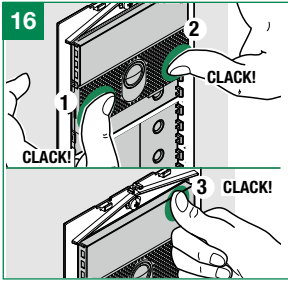
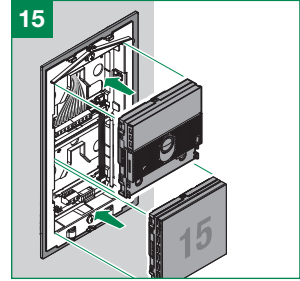
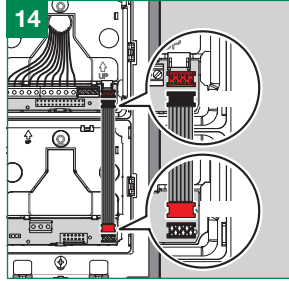
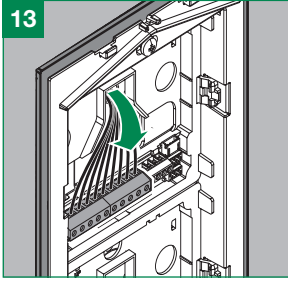
Comelit[®]
Passion. Technology. Design.

- IT** Kit per l'installazione della pulsantiera Ultra da 1/2/3/4 moduli su pareti in cartongesso.
In tutti i kit di fissaggio sono presenti 1 contropiastra in alluminio anodizzato, 4 viti di fissaggio, 1 accessorio passacavo, 4/6/8 o 10 alette di fissaggio e le relative viti.
- EN** Kit for installing the Ultra 1/2/3/4-module entrance panel to plasterboard surfaces.
All fixing kits have 1 anodised aluminium counterplate, 4 fixing screws and 1 cable routing accessory, plus 4/6/8 or 10 fixing tabs and the corresponding screws.
- FR** Kit d'installation de la platine Ultra à 1/2/3/4 modules sur cloisons en placoplâtre.
Tous les kits de fixation contiennent 1 contre-plaque en aluminium anodisé, 4 vis de fixation, 1 accessoire passe-câble, 4/6/8 ou 10 ailettes de fixation et les vis correspondantes.
- NL** Kit voor de installatie van het deurstation Ultra met 1/2/3/4 modules op gipswanden.
Alle bevestigingskits bevatten 1 tegenplaat van geanodiseerd aluminium, 4 bevestigingsschroeven, 1 kabelgeleider, 4/6/8 of 10 bevestigingsplaatjes met bijbehorende schroeven.
- DE** Kit für die Installation der Ultra-Türstation mit 1/2/3/4 Modulen auf Gipskartonwänden. Alle Befestigungskits enthalten 1 Gegenplatte aus eloxiertem Aluminium, 4 Befestigungsschrauben, 1 Kabeldurchgangszubehör, 4/6/8 oder 10 Befestigungslaschen und die entsprechenden Schrauben.
- ES** Kit para instalar la placa de calle Ultra de 1/2/3/4 módulos en paredes de pladur.
En todos los kits de fijación hay 1 contraplaca de aluminio anodizado, 4 tornillos de fijación, 1 accesorio pasacables y 4, 6, 8 o 10 aletas de fijación con sus tornillos.
- PT** Kit para instalação da botoneira Ultra de 1/2/3/4 módulos em paredes de pladur.
Todos os kits de fixação incluem: 1 placa de suporte em alumínio anodizado, 4 parafusos de fixação, 1 acessório passa-fios, 4/6/8 ou 10 aletas de fixação e respectivos parafusos.
- RU** Комплект для установки 1/2/3/4-модульной вызывной панели Ultra на стены из гипсокартона.
Во все крепежные комплекты входит 1 опорная пластина из анодированного алюминия, 4 крепежных винта, 1 кабельная муфта, 4/6/8 или 10 фиксаторов и соответствующие винты.
- TR** 1/2/3/4 Ultra modülü tuş takımının alçı panel duvarlara montajı için kit.
Tüm sabitleme kitlelerinde, e-loksall alüminyumdan 1 alçı panel, 4 sabitleme vidaları, 1 kablo geçirme aksesuarı, 4/6/8 veya 10 sabitleme kanadı ve ilgili tespit vidaları bulunur.
- PL** Zestaw do instalacji 1/2/3/4-modułowego panelu przycisków ultra na ścianach kartonowo-gipsowych.
Wszystkie zestawy montażowe zawierają 1 płytkę montażową z anodyzowanego aluminium, 4 śruby mocujące, 1 dławik kablowy, 4/6/8 lub 10 uchwytów mocujących i odpowiednie śruby.

- IT** Installazione **EN** Installation **FR** Installation **NL** Installatie **DE** Installation
ES Instalación **PT** Instalação **RU** Установка **TR** Ankastré montaj **PL** Instalacja







CERTIFIED MANAGEMENT SYSTEMS



www.comelitgroup.com

Via Don Arrigoni, 5 - 24020 Rovetta (BG) - Italy

1ª edizione 10/2021
cod. 2G40002572
8 023903 425574

