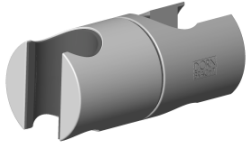







Slide unit for spray sets (2nd generation) Ø 23,5 x 1,3 mm - Brushed  
Champagne (22kt Gold)

SPARE PARTS

90 30 12 530 03



|   |                                     |                    |
|---|-------------------------------------|--------------------|
|    | Brushed<br>Champagne (22kt<br>Gold) | 90 30 12 530 03-46 |
|    | Chrome                              | 90 30 12 530 03-00 |
|    | Brushed Platinum                    | 90 30 12 530 03-06 |
|    | Platinum                            | 90 30 12 530 03-08 |
|    | Matte White                         | 90 30 12 530 03-10 |
|    | Dark Chrome                         | 90 30 12 530 03-19 |
|    | Light Gold (PVD)                    | 90 30 12 530 03-26 |
|    | Brushed Light Gold<br>(PVD)         | 90 30 12 530 03-27 |
|   | Brushed Durabronze<br>(23kt Gold)   | 90 30 12 530 03-28 |
|  | Matte Black                         | 90 30 12 530 03-33 |
|  | Brushed Bronze<br>(PVD)             | 90 30 12 530 03-42 |
|  | Champagne (22kt<br>Gold)            | 90 30 12 530 03-47 |
|  | Brushed Chrome                      | 90 30 12 530 03-93 |
|  | Brushed Dark<br>Platinum            | 90 30 12 530 03-99 |



Slide unit for spray sets (2nd generation) Ø 23,5 x 1,3 mm - Brushed  
Champagne (22kt Gold)

---

SPARE PARTS

90 30 12 530 03



Slide unit for spray sets (2nd generation) Ø 23,5 x 1,3 mm - Brushed  
Champagne (22kt Gold)

---

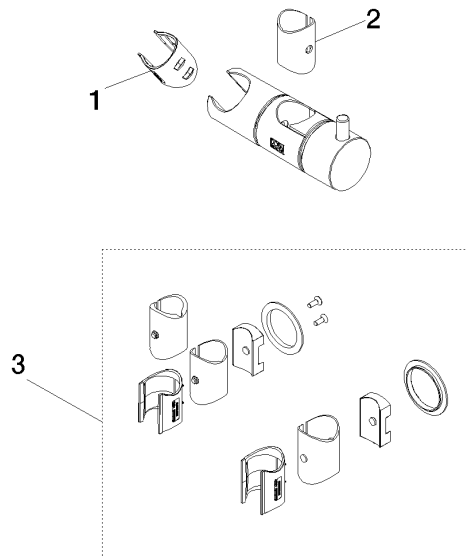
SPARE PARTS

90 30 12 530 03

Slide unit for spray sets (2nd generation) Ø 23,5 x 1,3 mm - Brushed  
Champagne (22kt Gold)

SPARE PARTS

90 30 12 530 03  
Parts for other  
finishes can be found  
here: [Chrome](#)



Spare parts list

| No. | Item Number        | Name   | Quantity used | Delivery time |
|-----|--------------------|--|---------------|---------------|
| 1   | 90 12 12 237 00 90 | Receptacle for hand shower -                 | 1.00          | 14            |
| 3   | 90 30 12 530 00 90 | set  | 1.00          | 20            |
| 2   | 90 18 40 560 00 90 | Insert Guide sleeve slider Ø 23,5 x 1,3 mm - | 1.00          | 14            |