

30 010 892 Product version from 6/30/2009



- 140mm projection
- fixed spout
- circular, air-enriched flow
- adapter with male thread 3/4"
- hole diameter 32 mm
- rosette Ø 55 mm
- max. flow 5.7 l/min
- lead-free
- This product can help a building meet the requirements of Green Building Rating Systems, e.g. LEED®, BREEAM®, DGNB

|   |                                |               |
|---|--------------------------------|---------------|
|    | Platinum                       | 30 010 892-08 |
|    | Chrome                         | 30 010 892-00 |
|    | Brushed Platinum               | 30 010 892-06 |
|    | Dark Chrome                    | 30 010 892-19 |
|    | Brushed Durabronze (23kt Gold) | 30 010 892-28 |
|    | Matte Black                    | 30 010 892-33 |
|    | Brushed Dark Brass (PVD)       | 30 010 892-39 |
|    | Brushed Bronze (PVD)           | 30 010 892-42 |
|    | Brushed Dark Bronze (PVD)      | 30 010 892-43 |
|   | Brushed Champagne (22kt Gold)  | 30 010 892-46 |
|  | Champagne (22kt Gold)          | 30 010 892-47 |
|  | Brushed Chrome                 | 30 010 892-93 |
|  | Brushed Dark Platinum          | 30 010 892-99 |

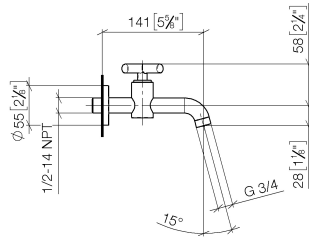
Recommended miscellaneous

- Concealed wall elbow -** 35 085 970 90
- min. recess depth 90 mm
  - max. recess depth 163 mm



30 010 892 Product version from 6/30/2009

mm [inches]



Flow rate chart



Codes & Standards

DIN 4109

ISO 3822

Ü-Zeichen



## TARA Wall-mounted valve cold water without pop-up waste - Platinum

TARA

30 010 892 Product version from 6/30/2009

### Certificates and sustainability

|        |  |
|--------|--|
| LGA_18 | EPD-DOR-20230287<br>-IBA1-EN<br>Environmental.prod<br>uct-declarat |
|--------|--|

