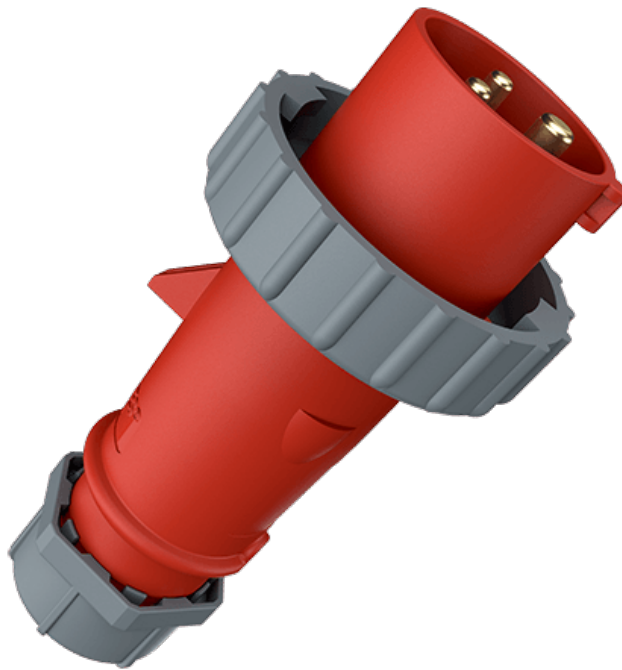


Plug AM-TOP

Part number: 291



MENNEKES
Elektrotechnik GmbH & Co. KG

Aloys-Mennekes-Straße 1
57399 Kirchhundem
GERMANY

www.MENNEKES.org

Product Description

- screw connection technology
- single part body
- protection against kinking
- strain relief
- cable gland and sealing

Technical Details

| Plug AM-TOP | 291 |
|---|---------------------------------|
| Product serie | AM-TOP |
| Ampere | 32A |
| Number of poles | 3p |
| Clock position | 9h |
| Nominal voltage AC | 400V |
| Nominal frequency | 50 - 60 Hz |
| Protection type IP | IP67 |
| Contact carrier | standard |
| Connection | screw terminals |
| Contact screw drive | PZ2, slot |
| Tightening torque connection terminal for cable cross-section 2,5 - 4,0 mm ² | 0.8 Nm |
| Tightening torque connection terminal for cable cross-section 6,0 mm ² | 1.2 Nm |
| Recommended wire end treatment for supply cable connection terminal | ferrule square gasproof crimped |
| Strip length jacket | 50 mm |
| Strip length conductor | 12 - 17 mm |
| Phase inverter | without phase inverter |
| Pilot contact | without pilot contact |
| Conductor cross-section min. | 2.5 mm ² |
| Conductor cross-section max. | 6 mm ² |
| Cable kink protection | integrated in cable gland |
| Protective grommet | without protective grommet |
| Protective cap | without protective cap |
| Weight (net) | 292 g |

| | |
|-----------------------------|---------------|
| Plug AM-TOP | 291 |
| Packaging unit | 10 pcs |
| EAN / identification number | 4015394002048 |

| Permissible ambient conditions | | |
|--------------------------------|--------|-------|
| | Min. | Max. |
| Permanent ambient temperature | -25 °C | 40 °C |

| Material properties | |
|---------------------|---|
| Housing | PA6 red [similar RAL 3013] |
| Bayonet ring | PC/PET squirrel grey [similar RAL 7000] |
| Clamp basket | PA6 natural colour [no RAL colour code] |
| | TPE natural colour [no RAL colour code] |
| Fastening | PA6 squirrel grey [similar RAL 7000] |

Material resistance

The material resistance overview can be found on the website in the section “Knowledge” - “Product knowledge” - “Materials”.

| Material and environmental properties | |
|---------------------------------------|---|
| RoHS 2011/65/EU incl. 2015/863/EU | ✓ |
| POP regulation (EU) 2019/1021 | ✓ |

| Regulations and Standards | |
|---------------------------|--------------------|
| Norm | DIN EN IEC 60309-2 |
| Declaration of Conformity | CE |
| Test label | EAC |

Dimensional Drawing



| Drawing 2 MB 218 | Amp. Poles | 16 | | | 32 | | |
|--------------------------------------|---------------|------|------|------|-----|-----|-----|
| | | 3 | 4 | 5 | 3 | 4 | 5 |
| Dim. in mm | a | 142 | 144 | 147 | 186 | 186 | 180 |
| | b | 70 | 78 | 87 | 94 | 94 | 101 |
| | n | 109 | 111 | 114 | 145 | 145 | 138 |
| | y | 14.5 | 16 | 16 | 22 | 22 | 22 |
| Terminal for cond. cross | | 1 | 1 | 1 | 2.5 | 2.5 | 2.5 |
| section (mm ²) min.-max. | | -2.5 | -2.5 | -2.5 | -6 | -6 | -6 |