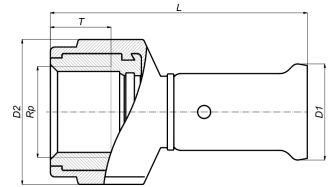


18PK-1604: Straight female adapter 16x1/2"



Commercial information

PVDF press fittings in combination with multilayer pipe, a completely corrosion-free system. The synthetic press fittings are made from injection moulded PVDF (Polyvinylidene fluoride)*. PVDF offers the user a unique combination of properties:

- Highly resistant to pressure and temperature
- Excellent mechanical strength
- Extreme flexibility: bending up to 10° is possible
- Perfectly suited for drinking water and food
- Highly resistant to chemicals and corrosion
- Embedding is possible without extra protection

Basic unit dimensions

Height	34 mm
Length	60 mm
Width	34 mm
Net weight	0.069 kg

Certificates

ATG, QB (CSTBat), DVGW Wasser, ETA, KIWA, ÖVGW Wasser, SINTEF, WRAS, KOMO, STF, ÖN EN 21003-2/-3, GOST-R, ITC, TSU, AFNOR, PZH, ACS, DNV-GL, Aenor, Sans 21003, Kontrol Biro, RISE, EMI

Applications

Potable water, Heating, Compressed air, Cooling, Sanitary

Solutions

Building installations, Industry, Utility, Shipbuilding

Technical characteristics

Material	Kunststof/messing	Bend radius	0 Millimetre
Material connection 1	Polyvinylidene fluoride (PVDF)	Outer pipe diameter connection 1	16 Millimetre
Material quality	Polyvinylidene fluoride (PVDF)	Length	59.5 Millimetre
Material quality connection 1	Polyvinylidene fluoride (PVDF) (expired)	Length of connection 1	38 Millimetre
Surface protection connection 1	Untreated	Working length connection 1	11 Millimetre
Surface treatment connection 1	Untreated	Length of connection 2	21.5 Millimetre
Material connection 2	Brass	Working length connection 2	7.5 Millimetre
Material quality connection 2	CuZn40Pb2 (CW617N)	Wrench width	0 Millimetre
Surface protection connection 2	Untreated	Wrench width union nut	0 Millimetre
Surface treatment connection 2	Untreated	Medium temperature (continuous)	-10 70 Degrees celsius
Shape	Straight	Max. operating pressure at 20 °C	16 Bar
Reducing	✘	Standard Dimension Ratio (SDR)	0
Eccentric	✘		
System specific	✓		
Connection 1	Press sleeve		
Contour code connection 1	TH/BE		
Nominal diameter connection 2	1/2 inch (15)		
Connection 2	Internal thread cylindrical BSPP-G (ISO 228-1)		
Main colour fitting	Black		
Material sealing	Ethylene-propylene diene monomer rubber (EPDM)		
With buffer stud	✓		
High tensile strength	✘		
With thermal insulation	✘		
Ring stiffness class	Other		
With sealing rings/gaskets	✓		
Capped	✘		
With drain valve	✘		
With de-aerator	✘		
FM quality mark	✘		
LPCB quality mark	✘		
ULC quality mark	✘		
UL quality mark	✘		
DIN-CERTCO certificate	✘		
VdS quality mark	✘		
With approval for TÜV	✘		
DVGW quality mark for gas	✘		
DVGW quality mark for water	✓		
KIWA certified	✓		
Gastec QA mark	✘		
KOMO certified	✓		
Type approval according to BBR/EKS	✘		