
INSTRUCTION HANDBOOK

OTDC S2.0-Series 100...250A Disassembling instructions



1. SCOPE

Scope of this document is to illustrate the basic structure and disassembly of OTDC S2.0-Series 100...250A switch-disconnectors.

This document uses OTDC250GV11 2p version as a reference product, and it covers other versions of OTDC S2.0-Series 100...250A switch-disconnectors with few differences to be taken into account. These differences include number of poles, pole configuration, side or front operation. Other differences between switch-disconnectors may result from accessories, including shafts, handles, phase barriers, shrouds, connection bars, auxiliary contacts, mechanical lugs and interlocks.

2. SAFETY NOTES

Before proceeding with any disassembling operation, it's mandatory to put the switch in open position.

Disassembling operations of switches must be performed by qualified and skilled personnel in the electrical field (IEV 195-04-01: person with relevant education and experience to enable him or her to perceive risks and to avoid hazards which electricity can create) and having a detailed knowledge of switch-disconnectors.

Disassembling activities must be performed in an ergonomic workspace able to ensure protection of persons demanded to perform disassembling activities.

Applicable national legislation and international standards in force at the time of disassembling of switch-disconnectors must be taken into account in addition to prescriptions illustrated in this document.

ABB declines any responsibility for injury to people or damage to property resulting from a failure to comply with the instructions set out in this document and with any applicable safety standard.

3. PERSONAL PROTECTIVE EQUIPMENT (PPE)

When performing disassembling following safety Personal Protective Equipment (PPE) must be worn:



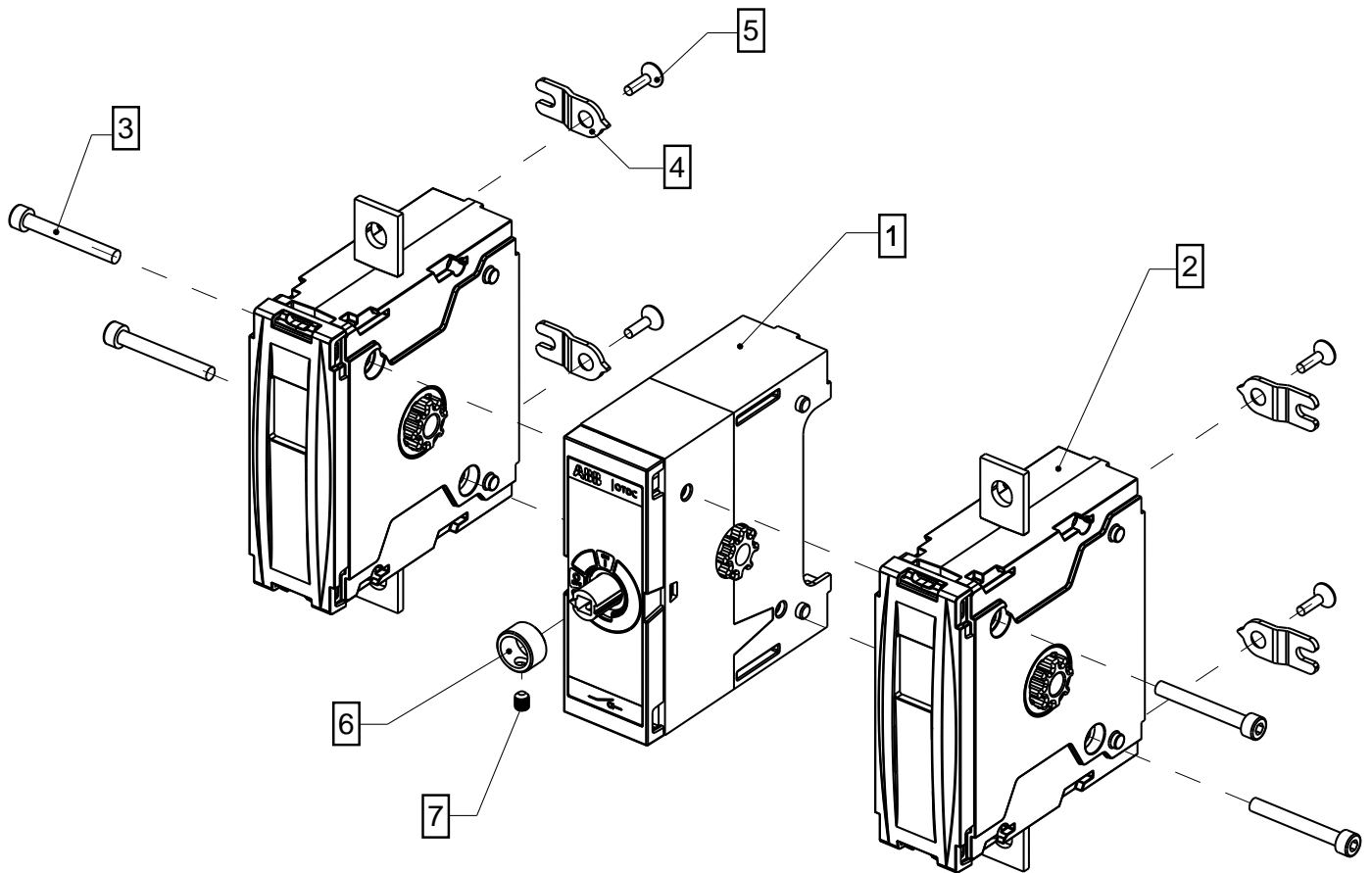
4. TOOLS

Disassembling operations require the use of tools (e.g. screwdriver, torx key, pliers, ...) tools to be used are specified inside each phase of the disassembling process.

5. DISASSEMBLING PROCESS

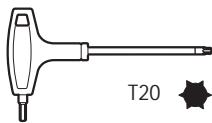
Disassembly process is to be performed following the structure shown in drawings in this chapter. Each drawing shows the components, their weight, material and quantity.

5.1 Phase 1, Switch Assembly



Tools:

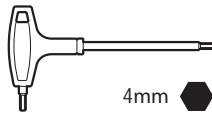
Torx key (size 20)



T20

For parts: 3

Allen key (size 4)



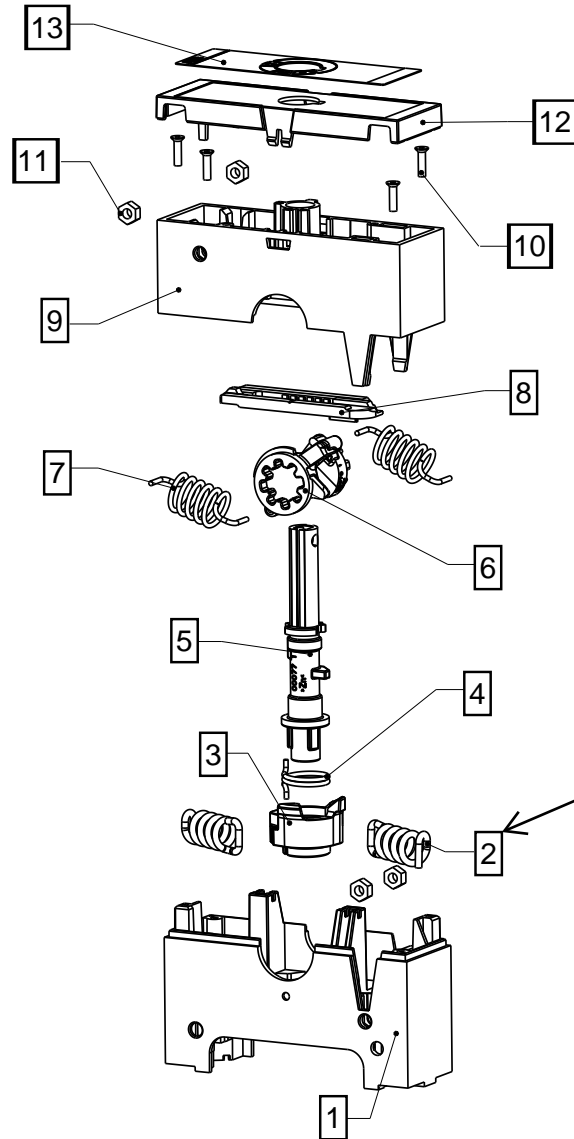
4mm

For parts: 4, 7



Part no.	Name	Qty	Materials	Weight (g/pc)
1	Mechanism	1	(Assembly)	384,7
2	Pole	2-4	(Assembly)	556,8
3	Hexag. Socket Head Screw	4	Chromium Steel	8,01 - 14,2
4	Mounting Plate	4	Steel	5,1
5	Screw	4	Steel	1,6
6	Locking Ring	1	Steel	5,4
7	Hexag. Socket Head Screw	1	Chromium Steel	0,5

5.2 Phase 2, Mechanism Assembly

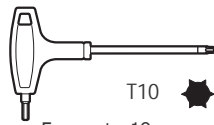


Note!

Pay special attention to tensioned springs. Use personal protective equipment.

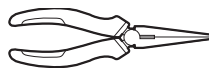
Tools:

Torx key (size 10)



For parts: 10

Pliers



For parts: 2, 4, 7

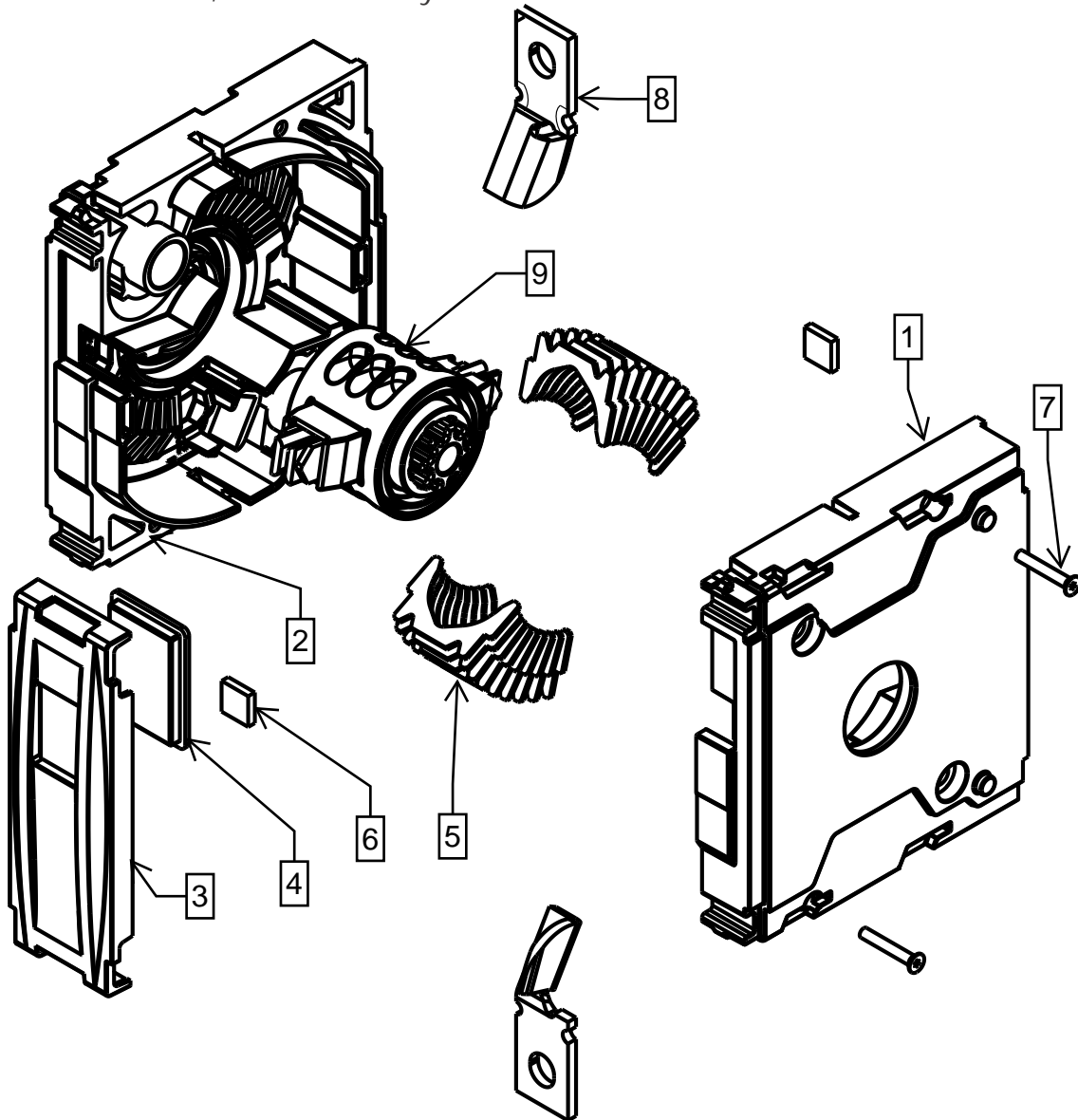
Flat screwdriver



For parts: 12

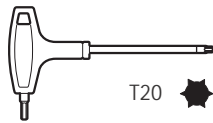
Part no.	Name	Qty	Materials	Weight (g/pc)
1	Frame A	1	Polyamide	109,05
2	Spring	2	Steel	9,68
3	Lever A	1	Zinc Alloy	36,96
4	Rhythm Spring	1	Steel	2,61
5	Pipeshaft	1	Zinc Alloy	52,81
6	Lever B	1	Zinc Alloy	56,21
7	Aux Spring	2	Chromium Steel	6,72
8	Contact Guide Support	1	Polyamide	4,66
9	Frame B	1	Polyamide	68,75
10	Screw	4	Steel	0,76
11	Steel Hex Nut	4	Chromium Steel	1,45
12	Cover	1	Polycarbonate	11,85
13	Cover Plate	1	Polycarbonate	0,20

5.3 Phase 3, Pole Assembly



Torx key (size 20)

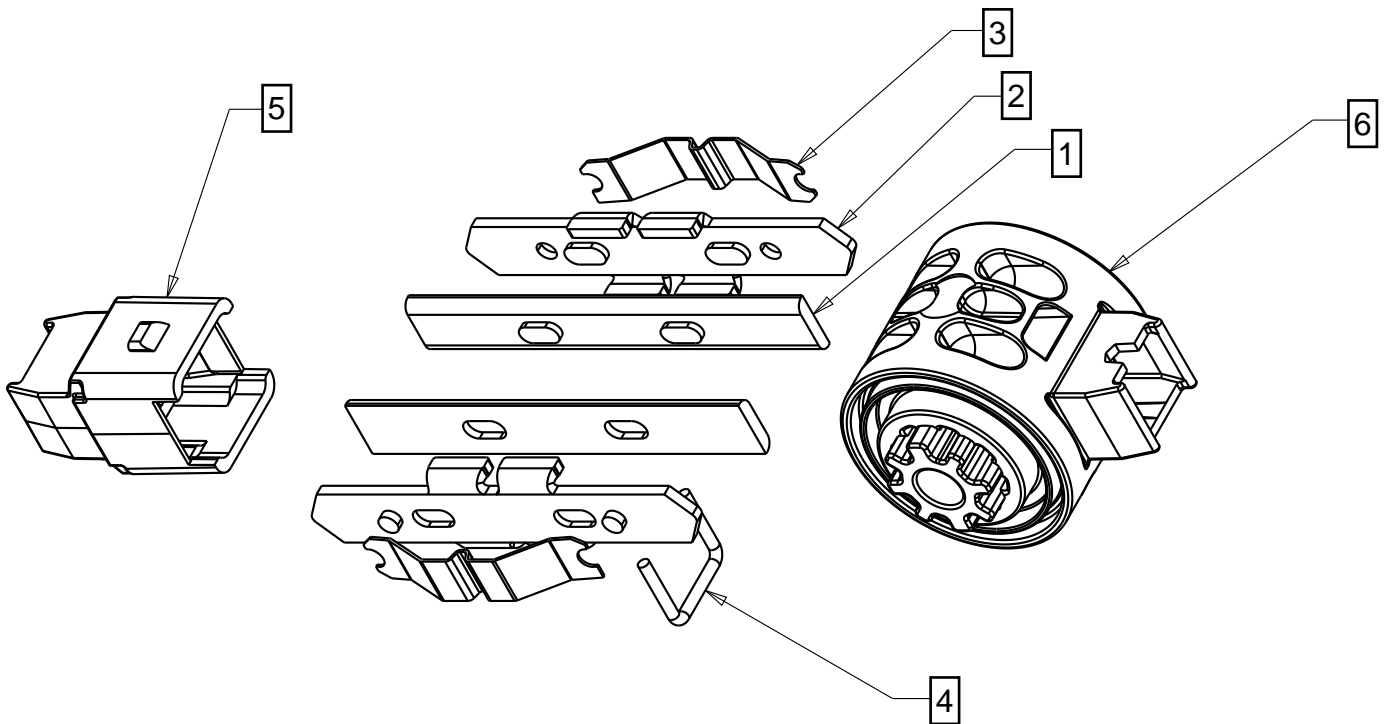
Tools:



For parts: 7

Part no.	Name	Qty	Materials	Weight (g/pc)
1	Frame A	1	Polyester	188,1
2	Frame B	1	Polyester	220,8
3	Cover	1	Polycarbonate	10,3
4	Window	1	Polycarbonate	2,5
5	Arc Plate	18	Steel	2,9
6	Magnet	2	Neodym Iron Boron	1,8
7	Screw	2	Steel	1,2
8	Fixed Contact	2	Copper	26,4
9	Contact Construction	1	(Assembly)	110,6

5.4 Phase 4, Contact Construction Assembly



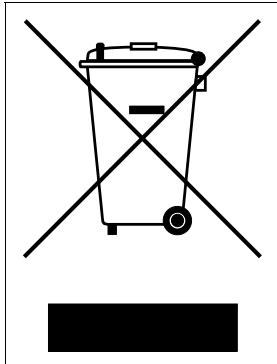
Part no.	Name	Qty	Materials	Weight (g/pc)
1	Contact Knife	2	Copper	17,9
2	Contact Iron	2	Steel	15,8
3	Contact Spring	2	Chromium Steel	1,6
4	Spring Guide	1	Chromium Steel	1,0
5	Locking Piece	1	Polyamide	6,6
6	Roll	1	Polyamide	32,5

6. Recycling information in accordance with the WEEE

The product is marked with the wheelie bin symbol. It indicates that at the end of life the product should enter the recycling system.

You should dispose of it separately at an appropriate collection point and not place it in the normal waste stream.

The figure below shows the wheelie bin symbol indicating separate collection for electrical and electronic equipment (EEE).



The horizontal bar underneath the crossed-out wheelie bin indicates that the equipment has been manufactured after the Directive came into force in 2005.

The wheelie bin symbol is added to the type designation label of the product since 2017.

The figure below shows an example.



Contact us

ABB Oy

P.O. Box 622
FI-65101 Vaasa
Finland

abb.com/lowvoltage