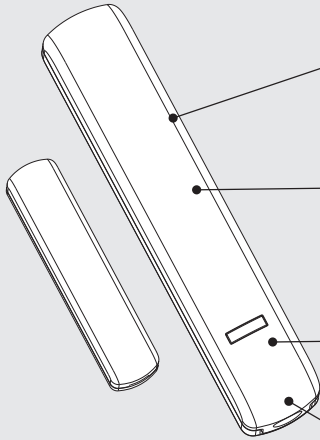
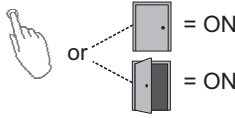


Door/Window Sensor CDWA-01/3..



Battery CR2
Long battery service life

Selectable sensor behavior:

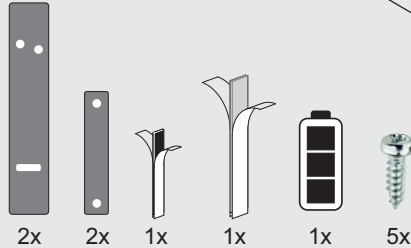


Multi-Color Status LED



868.3 Mhz

IP20



Colors	Type Designation
Warm white	CDWA-01/3a
Bright white	CDWA-01/3b
Grey	CDWA-01/3c
Brown	CDWA-01/3d

Technical Data / Technische gegevens / Tekniske data / Technische Daten / Technická data

Power supply	Battery, CR2 3 Vdc
Battery Service Life	>5 years (TYP)
Behavior sensor	ON if closed (factory default) ON if open (selectable)
Max. Distance	Fe < 10 mm (sensor/magnet) None Fe < 15 mm (sensor/magnet)
Button Operation	Set sensor behavior
LED	Multi-Color operation status
Dimensions	
Magnet	55 x 12 x 12 mm (H x W x D)
Sensor	103 x 19 x 29 mm (H x W x D)
RF	868.3 Mhz (xComfort compatible)
Max. RF power	25 mW (ERP)

0°C +40°C* +70°C

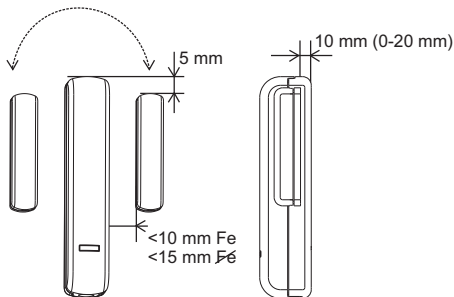
0°C -25°C

MRF	Version 2.64
RM	Version V41c
SHC-RF	Version 2.21
ECI-RF	Version 2.10
USB-RF	Version 2.10

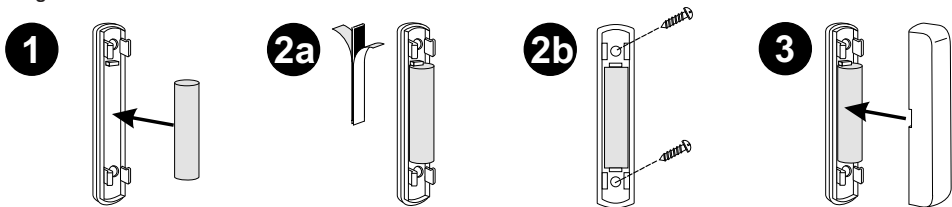


www.eaton.eu/xcomfort

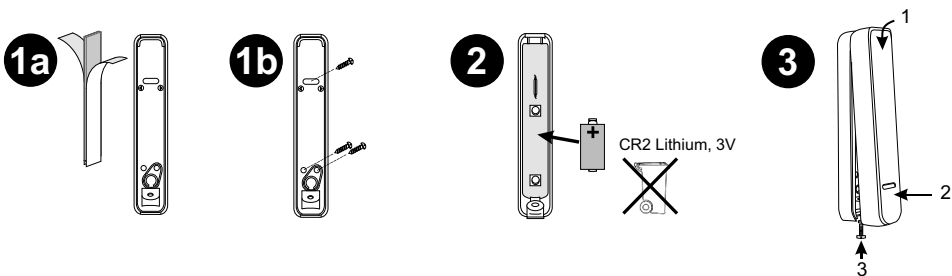
Magnet positioning / Positionering magneet / Plassering av magneten / Positionierung des Magneten / Umístění magnetu



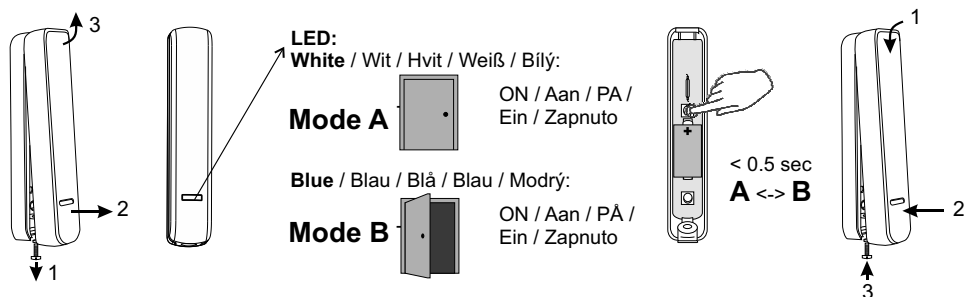
Mounting / Montage / Montering / Montage / Montáž:
Magnet



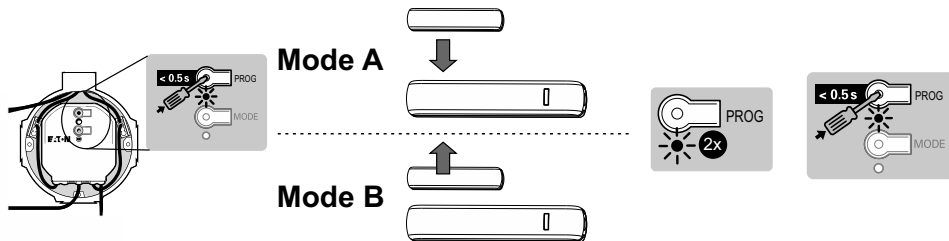
Sensor



Change contact type / Contact type wijzigen / Endre kontaktype / Kontaktyp ändern / Změnit typ kontaktu

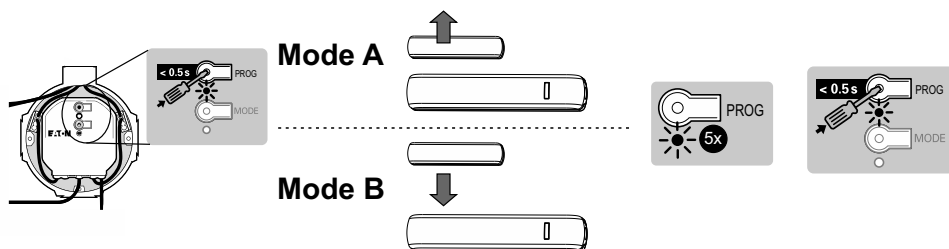


Assign Sensor in Basic Mode* / Sensor in Basic Mode toewijzen* / Tilknytte i Basic Mode* / Zuweisen des Sensors im Basic Mode* / Přiřadit v základním režimu*



*Supported by: CSAU, CDAU, CJAU, CDAP, CSAP

Remove Sensor in Basic Mode / Sensor in Basic Mode verwijderen / Fjerne i Basic Mode / Löschen des Sensors im Basic Mode / Odstranit v základním režimu



LED during operation / LED tijdens bedrijf / LED under drift / LED im Normalbetrieb / LED během provozu

During 20 sec after status change / Gedurende 20 seconden na statuswijziging / I løbet av 20 sek etter statusendring / Nach Statusänderung für 20 Sekunden / Během 20 sekund po změně stavu

<p>Blue flashing Blauw knipperend Blå blinkende Blaues Blinken Modrá blikání</p>	<p>No assignment Geen toekenning Ingen oppgave Keine Zuordnung Žádná přiřazení</p>	<p>Orange flashing Oranje knipperend Oransje blinkende Oranges Blinken Oranžová blikání</p>	<p>Bad RF communication Slechte RF-communicatie Dårlig RF-Kommunikasjon Schlechte RF-Kommunikation Špatná RF komunikace</p>
<p>Red steady Rood continue Rød, permanent Rotes Dauerlicht Červená stabilní</p>	<p>Replace battery Vervang de batterij Bytt batteri Batterie wechseln Vyměnit baterii</p>	<p>Red flashing Rood knipperend Rød blinkende Rotes Blinken Červená blikání</p>	<p>No RF communication Geen RF-communicatie Ingen RF-kommunikasjon Keine RF-Kommunikation Žádná RF komunikace</p>

At status change, when activated in MRF / Bij statusverandering, indien geactiveerd met MRF / Ved statusendring, når aktivert med MRF / Bei Statusänderung wenn mit MRF aktiviert / Při změně stavu, když je aktivován MRF

<p>Green short flash Groene korte flits Kort grønt blink</p>	<p>RF communication okay RF-communicatie in orde RF-kommunikasjon ok</p>	<p>Grünes kurzes Blinken Zelené krátké bliknutí</p>	<p>RF-Kommunikation in Ordnung RF komunikace je v pořádku</p>
---	---	---	---



Declaration of Conformity

We, EATON Industries (Austria) GmbH
3943 Schrems, Eugenia 1
Austria

declare under our sole responsibility as manufacturer that the product (family)

Eaton - Door Window Sensor, CDWA-01/3x

(the declaration of conformity applies to all listed types within our actual product catalogue)

provided that it is installed, maintained and used in the application intended for, with respect to the relevant manufacturers instructions, installation standards and "good engineering practices"

complies with the provisions of Council directive(s):

RED Directive 2014/53/EU

RoHS Directive 2011/65/EU + 2015/863

based on compliance with following standard(s):

EN 300 220-2 V3.1.1, EN 300 220-2 V3.2.1, EN 50491-5-1:2010, EN 50491-5-2:2010, EN 60669-2-5:2016, EN 301 489-1 V1.9.2, EN 301 489 V2.1.0, EN 301 489-3 V1.6.1, EN 301 489-3 V2.1.1, EN IEC 63044-5-1:2019, EN IEC 63044-5-2:2019, EN 62368-1:2014, EN 63000:2018

EU- type examination performed by:
TUV Austria Services GmbH, Notified Body
1230 Vienna, Deutschstrasse 10, Austria

Affixing date of CE mark: 2019
Doc.Id.: CDWA-013x_050721


Fernando Coccarelli

Senior Vice President
General Manager

Schrems, 21.06.2021


Friedrich Schröder

Director Quality
& Systems