

Data Sheet | Item Number: 2092-3105/002-1000

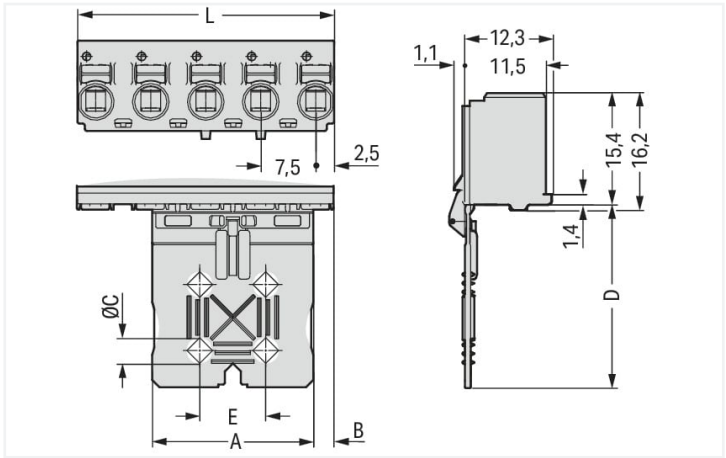
1-conductor female connector; push-button; Push-in CAGE CLAMP®; 2.5 mm²; Pin spacing 7.5 mm; 5-pole; Gripping plate sliding connector release; direct marking; 2,50 mm²; light gray

<https://www.wago.com/2092-3105/002-1000>



Color: ■ light gray

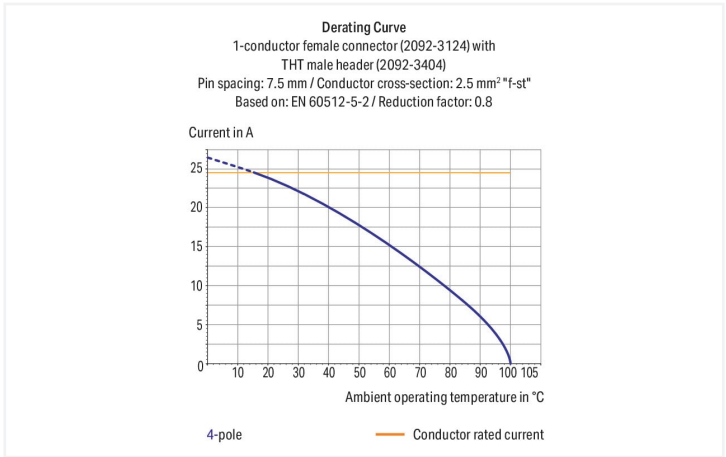
Similar to illustration



Dimensions in mm

$L = (\text{pole no.} - 1) \times \text{pin spacing} + 5 \text{ mm}$

| Gripping plate Dimensions (in mm): | | | | | |
|------------------------------------|----|------|-----|----|---|
| Pole No. | A | B | C | D | E |
| 2 | 7 | 2.75 | – | 20 | – |
| 3 | 12 | 4 | – | 20 | – |
| 4 | 22 | 2.75 | 3.5 | 25 | 9 |
| 5 | 22 | 2.75 | 3.5 | 25 | 9 |



- Universal connection of all conductor types
- Simple, push-in termination of solid and ferruled conductors
- Easy-to-use design does not require special tools
- Ability to wire while mated or unmated
- Testing parallel to conductor entry – tip contact
- Also available with gripping plates
- Integrated locking latches prevent accidental disconnection

| Notes | |
|--------------------|---|
| Safety information | The picoMAX® Pluggable Connection System includes connectors without breaking capacity in accordance with DIN EN 61984. When used as intended, these connectors must not be connected/disconnected when live or under load. The circuit design should ensure header pins, which can be touched, are not live when unmated. |
| Variants: | Direct marking Other versions (or variants) can be requested from WAGO Sales or configured at https://configurator.wago.com/ . |



| Electrical data | | | | |
|----------------------|-------|----------------|--------|--|
| Ratings per | | IEC/EN 60664-1 | | |
| Overvoltage category | III | III | II | |
| Pollution degree | 3 | 2 | 2 | |
| Nominal voltage | 400 V | 630 V | 1000 V | |
| Rated surge voltage | 6 kV | 6 kV | 6 kV | |
| Rated current | 16 A | 16 A | 16 A | |
| Approvals per | | UL 1059 | | |
| Use group | B | C | D | |
| Rated voltage | 300 V | - | 300 V | |
| Rated current | 15 A | - | 10 A | |

| Connection data | | | | | | | | | | | | | | | | | | | | |
|---|---------------------------------------|---|-----------------------|---------------------|----------------|-------------|-----------------------|---------------------------------------|-----------------|---------------------------------|-------------------------|---------------------------------|---|------------------|---|------------------|--------------|------------------------------------|-------------|---|
| Connection points | 5 | <div>Connection 1</div> <table><tr><td>Connection technology</td><td>Push-in CAGE CLAMP®</td></tr><tr><td>Actuation type</td><td>Push-button</td></tr><tr><td>Actuation direction 1</td><td>Operation parallel to conductor entry</td></tr><tr><td>Solid conductor</td><td>0.2 ... 2.5 mm² / 24 ... 12 AWG</td></tr><tr><td>Fine-stranded conductor</td><td>0.2 ... 2.5 mm² / 24 ... 12 AWG</td></tr><tr><td>Fine-stranded conductor; with insulated ferrule</td><td>0.25 ... 1.5 mm²</td></tr><tr><td>Fine-stranded conductor; with uninsulated ferrule</td><td>0.25 ... 2.5 mm²</td></tr><tr><td>Strip length</td><td>9 ... 10 mm / 0.35 ... 0.39 inches</td></tr><tr><td>Pole number</td><td>5</td></tr></table> | Connection technology | Push-in CAGE CLAMP® | Actuation type | Push-button | Actuation direction 1 | Operation parallel to conductor entry | Solid conductor | 0.2 ... 2.5 mm² / 24 ... 12 AWG | Fine-stranded conductor | 0.2 ... 2.5 mm² / 24 ... 12 AWG | Fine-stranded conductor; with insulated ferrule | 0.25 ... 1.5 mm² | Fine-stranded conductor; with uninsulated ferrule | 0.25 ... 2.5 mm² | Strip length | 9 ... 10 mm / 0.35 ... 0.39 inches | Pole number | 5 |
| Connection technology | Push-in CAGE CLAMP® | | | | | | | | | | | | | | | | | | | |
| Actuation type | Push-button | | | | | | | | | | | | | | | | | | | |
| Actuation direction 1 | Operation parallel to conductor entry | | | | | | | | | | | | | | | | | | | |
| Solid conductor | 0.2 ... 2.5 mm² / 24 ... 12 AWG | | | | | | | | | | | | | | | | | | | |
| Fine-stranded conductor | 0.2 ... 2.5 mm² / 24 ... 12 AWG | | | | | | | | | | | | | | | | | | | |
| Fine-stranded conductor; with insulated ferrule | 0.25 ... 1.5 mm² | | | | | | | | | | | | | | | | | | | |
| Fine-stranded conductor; with uninsulated ferrule | 0.25 ... 2.5 mm² | | | | | | | | | | | | | | | | | | | |
| Strip length | 9 ... 10 mm / 0.35 ... 0.39 inches | | | | | | | | | | | | | | | | | | | |
| Pole number | 5 | | | | | | | | | | | | | | | | | | | |
| Total number of potentials | 5 | | | | | | | | | | | | | | | | | | | |
| Number of connection types | 1 | | | | | | | | | | | | | | | | | | | |
| Number of levels | 1 | | | | | | | | | | | | | | | | | | | |

| Physical data | |
|---------------|------------------------|
| Pin spacing | 7.5 mm / 0.295 inches |
| Width | 35 mm / 1.378 inches |
| Height | 39 mm / 1.535 inches |
| Depth | 14.4 mm / 0.567 inches |

| Mechanical data | |
|--------------------------|---|
| Variable coding | Yes |
| Design | with gripping plate and sliding connector release |
| Anti-rotation protection | Yes |

| Plug-in connection | |
|--------------------------------------|-------------------------|
| Contact type (pluggable connector) | Female connector/socket |
| Connector (connection type) | for conductor |
| Mismating protection | No |
| Plugging without loss of pin spacing | Yes |

| Material data | |
|-----------------------------|--|
| Note (material data) | Information on material specifications can be found here |
| Color | light gray |
| Material group | I |
| Insulation material | Polyphthalamide (PPA GF) |
| Flammability class per UL94 | V0 |
| Clamping spring material | Chrome-nickel spring steel (CrNi) |
| Contact material | Electrolytic copper (E _{Cu}) |
| Contact plating | Tin |
| Fire load | 0.031 MJ |
| Weight | 6.7 g |



| Environmental requirements | |
|----------------------------|-----------------|
| Limit temperature range | -60 ... +100 °C |
| Processing temperature | -35 ... +60 °C |

| Commercial data | |
|-----------------------|---------------|
| eCl@ss 10.0 | 27-14-11-06 |
| eCl@ss 9.0 | 27-14-11-06 |
| ETIM 8.0 | EC001284 |
| ETIM 7.0 | EC001284 |
| PU (SPU) | 100 pcs |
| Packaging type | Box |
| Country of origin | DE |
| GTIN | 4050821488439 |
| Customs tariff number | 85366990990 |

| Environmental Product Compliance | |
|----------------------------------|------------------------|
| RoHS Compliance Status | Compliant,No Exemption |

Approvals / Certificates

General approvals



| Approval | Standard | Certificate Name |
|---|-----------|------------------|
| CB DEKRA Certification B.V. | IEC 61984 | NL-49737/A1 |
| CSA DEKRA Certification B.V. | C22.2 | 2362521 |
| cURus Underwriters Laboratories Inc. | UL 1059 | E45172 |
| KEMA/KEUR DEKRA Certification B.V. | EN 61984 | 71-102261 REV.2 |
| UL Underwriters Laboratories Inc. | UL 1977 | E45171 |

Downloads

Environmental Product Compliance

| Compliance Search | |
|--|--|
| Environmental Product Compliance 2092-3105/002-1000 | |



Documentation

Additional Information

| | | | |
|-------------------|------------|-------------------|--|
| Technical Section | 03.04.2019 | pdf 2010.85 KB | |
|-------------------|------------|-------------------|--|

1 Compatible Products

1.1 System counterpart

1.1.1 Male connector/plug



Item No.: 2092-3425

THT male header; 1.4 mm Ø solder pin; angled; Pin spacing 7.5 mm; 5-pole; light gray



Item No.: 2092-3405

THT male header; 1.4 mm Ø solder pin; straight; Pin spacing 7.5 mm; 5-pole; light gray

1.2 Optional Accessories

1.2.1 Test and measurement

1.2.1.1 Testing accessories



Item No.: 735-500

WAGO Test pin; 1 mm Ø; 30 V AC / 60 V DC; CAT0; 1 A; 6 mm uninsulated; Test lead for soldering up to 0,5mm²

1.2.2 Tool

1.2.2.1 Operating tool

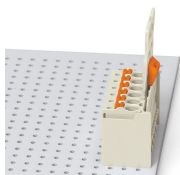


Item No.: 210-719

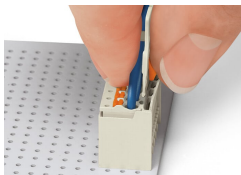
Operating tool; Blade: 2.5 x 0.4 mm; with a partially insulated shaft

Installation Notes

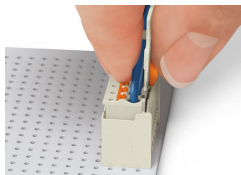
Locking system



Male header mated to a female connector with gripping plate and sliding connector release.

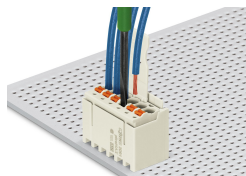


Push down sliding connector release (gripping plate) to open the locking latch.



Pull out female connector from male header.

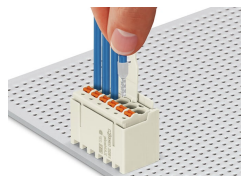
Conductor termination



Inserting fine-stranded conductor into mated female connector via push-button.



Inserting a fine-stranded conductor into an unmated female connector via push-button.



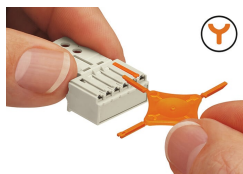
Inserting solid and ferruled conductors via push-in termination.

Marking



Pole marking via factory direct marking.

Coding



Coding a female connector (via coding key carrier and two keys for female connector, see symbol).

Testing



Testing via 1 mm Ø test pin – touch contact.