

Data Sheet | Item Number: 2092-3104/002-000

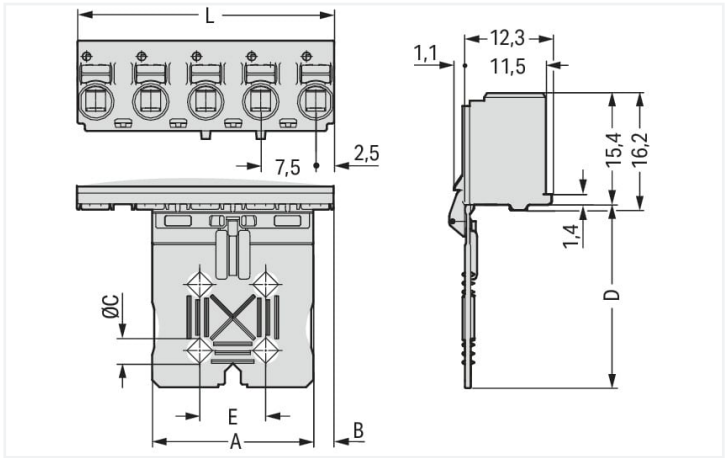
1-conductor female connector; push-button; Push-in CAGE CLAMP®; 2.5 mm²; Pin spacing 7.5 mm; 4-pole; Gripping plate sliding connector release; 2,50 mm²; light gray

<https://www.wago.com/2092-3104/002-000>



Color: ■ light gray

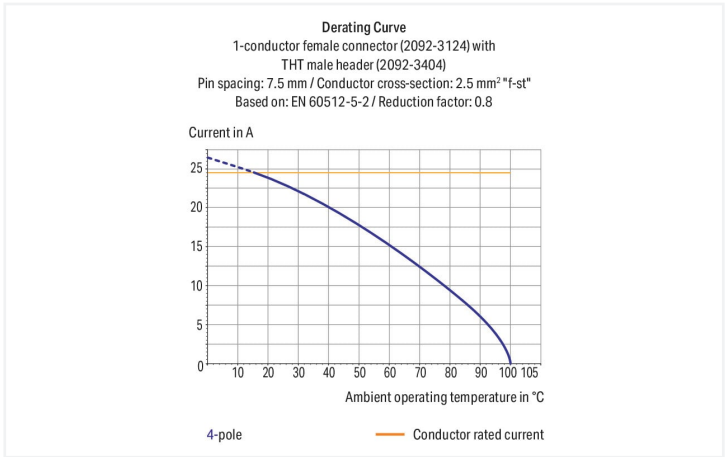
Similar to illustration



Dimensions in mm

L = (pole no. – 1) x pin spacing + 5 mm

| Gripping plate Dimensions (in mm): |    |      |     |    |   |
|------------------------------------|----|------|-----|----|---|
| Pole No.                           | A  | B    | C   | D  | E |
| 2                                  | 7  | 2.75 | –   | 20 | – |
| 3                                  | 12 | 4    | –   | 20 | – |
| 4                                  | 22 | 2.75 | 3.5 | 25 | 9 |
| 5                                  | 22 | 2.75 | 3.5 | 25 | 9 |



- Universal connection of all conductor types
- Simple, push-in termination of solid and ferruled conductors
- Easy-to-use design does not require special tools
- Ability to wire while mated or unmated
- Testing parallel to conductor entry – tip contact
- Also available with gripping plates
- Integrated locking latches prevent accidental disconnection

Notes

Safety information

The **picoMAX® Pluggable Connection System** includes connectors without breaking capacity in accordance with DIN EN 61984. When used as intended, these connectors must not be connected/disconnected when live or under load. The circuit design should ensure header pins, which can be touched, are not live when unmated.

Variants:

Direct marking  
Other versions (or variants) can be requested from WAGO Sales or configured at <https://configurator.wago.com/>.



Electrical data

| Ratings per IEC/EN 60664-1 |       |       |        | Approvals per UL 1059 |       |   |       |
|----------------------------|-------|-------|--------|-----------------------|-------|---|-------|
| Overvoltage category       | III   | III   | II     | Use group             | B     | C | D     |
| Pollution degree           | 3     | 2     | 2      | Rated voltage         | 300 V | - | 300 V |
| Nominal voltage            | 400 V | 630 V | 1000 V | Rated current         | 15 A  | - | 10 A  |
| Rated surge voltage        | 6 kV  | 6 kV  | 6 kV   |                       |       |   |       |
| Rated current              | 16 A  | 16 A  | 16 A   |                       |       |   |       |

Connection data

|                            |   |                                                   |                                       |
|----------------------------|---|---------------------------------------------------|---------------------------------------|
| Connection points          | 4 | Connection 1                                      |                                       |
| Total number of potentials | 4 | Connection technology                             | Push-in CAGE CLAMP®                   |
| Number of connection types | 1 | Actuation type                                    | Push-button                           |
| Number of levels           | 1 | Actuation direction 1                             | Operation parallel to conductor entry |
|                            |   | Solid conductor                                   | 0.2 ... 2.5 mm² / 24 ... 12 AWG       |
|                            |   | Fine-stranded conductor                           | 0.2 ... 2.5 mm² / 24 ... 12 AWG       |
|                            |   | Fine-stranded conductor; with insulated ferrule   | 0.25 ... 1.5 mm²                      |
|                            |   | Fine-stranded conductor; with uninsulated ferrule | 0.25 ... 2.5 mm²                      |
|                            |   | Strip length                                      | 9 ... 10 mm / 0.35 ... 0.39 inches    |
|                            |   | Pole number                                       | 4                                     |

Physical data

|             |                        |
|-------------|------------------------|
| Pin spacing | 7.5 mm / 0.295 inches  |
| Width       | 27.5 mm / 1.083 inches |
| Height      | 39 mm / 1.535 inches   |
| Depth       | 14.4 mm / 0.567 inches |

Mechanical data

|                          |                                                   |
|--------------------------|---------------------------------------------------|
| Variable coding          | Yes                                               |
| Design                   | with gripping plate and sliding connector release |
| Anti-rotation protection | Yes                                               |

Plug-in connection

|                                      |                         |
|--------------------------------------|-------------------------|
| Contact type (pluggable connector)   | Female connector/socket |
| Connector (connection type)          | for conductor           |
| Mismating protection                 | No                      |
| Plugging without loss of pin spacing | Yes                     |

Material data

|                             |                                                                                                                        |
|-----------------------------|------------------------------------------------------------------------------------------------------------------------|
| Note (material data)        | <a href="https://www.wago.com/us/material-specifications">Information on material specifications can be found here</a> |
| Color                       | light gray                                                                                                             |
| Material group              | I                                                                                                                      |
| Insulation material         | Polyphthalamide (PPA GF)                                                                                               |
| Flammability class per UL94 | V0                                                                                                                     |
| Clamping spring material    | Chrome-nickel spring steel (CrNi)                                                                                      |
| Contact material            | Electrolytic copper (E <sub>Cu</sub> )                                                                                 |
| Contact plating             | Tin                                                                                                                    |
| Fire load                   | 0.029 MJ                                                                                                               |
| Weight                      | 5.4 g                                                                                                                  |



| Environmental requirements |                 |
|----------------------------|-----------------|
| Limit temperature range    | -60 ... +100 °C |
| Processing temperature     | -35 ... +60 °C  |

| Commercial data       |               |
|-----------------------|---------------|
| eCl@ss 10.0           | 27-14-11-06   |
| eCl@ss 9.0            | 27-14-11-06   |
| ETIM 8.0              | EC001284      |
| ETIM 7.0              | EC001284      |
| PU (SPU)              | 100 pcs       |
| Packaging type        | Box           |
| Country of origin     | DE            |
| GTIN                  | 4050821411925 |
| Customs tariff number | 85366990990   |

| Environmental Product Compliance |                        |
|----------------------------------|------------------------|
| RoHS Compliance Status           | Compliant,No Exemption |

Approvals / Certificates

General approvals



| Approval                                | Standard      | Certificate Name |
|-----------------------------------------|---------------|------------------|
| CB<br>DEKRA Certification B.V.          | IEC 61984     | NL-49737/A1      |
| CSA<br>DEKRA Certification B.V.         | C22.2         | 2362521          |
| CSA<br>DEKRA Certification B.V.         | C22.2 No. 158 | 2362521          |
| cURus<br>Underwriters Laboratories Inc. | UL 1059       | E45172           |
| KEMA/KEUR<br>DEKRA Certification B.V.   | EN 61984      | 71-102261 REV.2  |
| UL<br>Underwriters Laboratories Inc.    | UL 1977       | E45171           |

Downloads

Environmental Product Compliance

| Compliance Search                                     |  |
|-------------------------------------------------------|--|
| Environmental Product Compliance<br>2092-3104/002-000 |  |



Documentation

| Additional Information |            |                   |  |
|------------------------|------------|-------------------|--|
| Technical Section      | 03.04.2019 | pdf<br>2010.85 KB |  |

CAD/CAE-Data

| CAD data                          |
|-----------------------------------|
| 2D/3D Models<br>2092-3104/002-000 |
|                                   |

| CAE data                          |
|-----------------------------------|
| ZUKEN Portal<br>2092-3104/002-000 |
|                                   |

1 Compatible Products

1.1 System counterpart

1.1.1 Male connector/plug



**Item No.: 2092-3424**  
THT male header; 1.4 mm Ø solder pin; angled; Pin spacing 7.5 mm; 4-pole; light gray



**Item No.: 2092-3404**  
THT male header; 1.4 mm Ø solder pin; straight; Pin spacing 7.5 mm; 4-pole; light gray

1.2 Optional Accessories

1.2.1 Test and measurement

1.2.1.1 Testing accessories



**Item No.: 735-500**  
WAGO Test pin; 1 mm Ø; 30 V AC / 60 V DC; CAT0; 1 A; 6 mm uninsulated; Test lead for soldering up to 0,5mm²

1.2.2 Tool

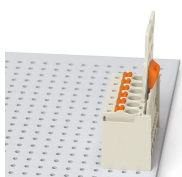
1.2.2.1 Operating tool



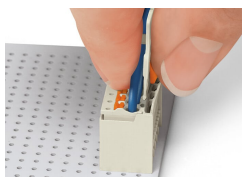
**Item No.: 210-719**  
Operating tool; Blade: 2.5 x 0.4 mm; with a partially insulated shaft

## Installation Notes

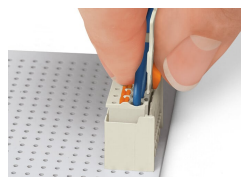
### Locking system



Male header mated to a female connector with gripping plate and sliding connector release.

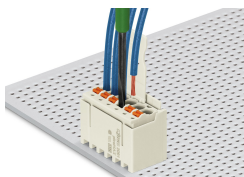


Push down sliding connector release (gripping plate) to open the locking latch.



Pull out female connector from male header.

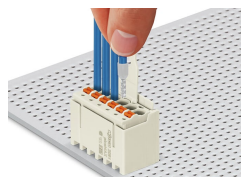
### Conductor termination



Inserting fine-stranded conductor into mated female connector via push-button.



Inserting a fine-stranded conductor into an unmated female connector via push-button.



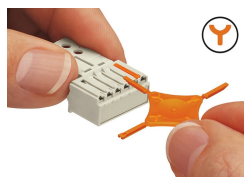
Inserting solid and ferruled conductors via push-in termination.

### Marking



Pole marking via factory direct marking.

### Coding



Coding a female connector (via coding key carrier and two keys for female connector, see symbol).

### Testing



Testing via 1 mm Ø test pin – touch contact.