

22 900 892 Product version up to 5/27/2021

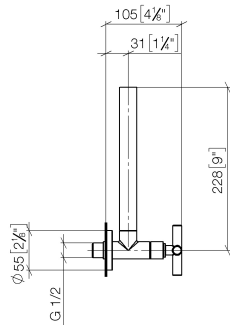


- rosette Ø 55 mm
- hose covering 200mm, for shortening

	Platinum	22 900 892-08
	Chrome	22 900 892-00
	Brushed Platinum	22 900 892-06
	Dark Chrome	22 900 892-19
	Brushed Durabronze (23kt Gold)	22 900 892-28
	Matte Black	22 900 892-33
	Brushed Gold (PVD)	22 900 892-37
	Brushed Dark Brass (PVD)	22 900 892-39
	Brushed Bronze (PVD)	22 900 892-42
	Brushed Dark Bronze (PVD)	22 900 892-43
	Brushed Champagne (22kt Gold)	22 900 892-46
	Champagne (22kt Gold)	22 900 892-47
	Brushed Dark Platinum	22 900 892-99

22 900 892 Product version up to 5/27/2021

mm [inches]

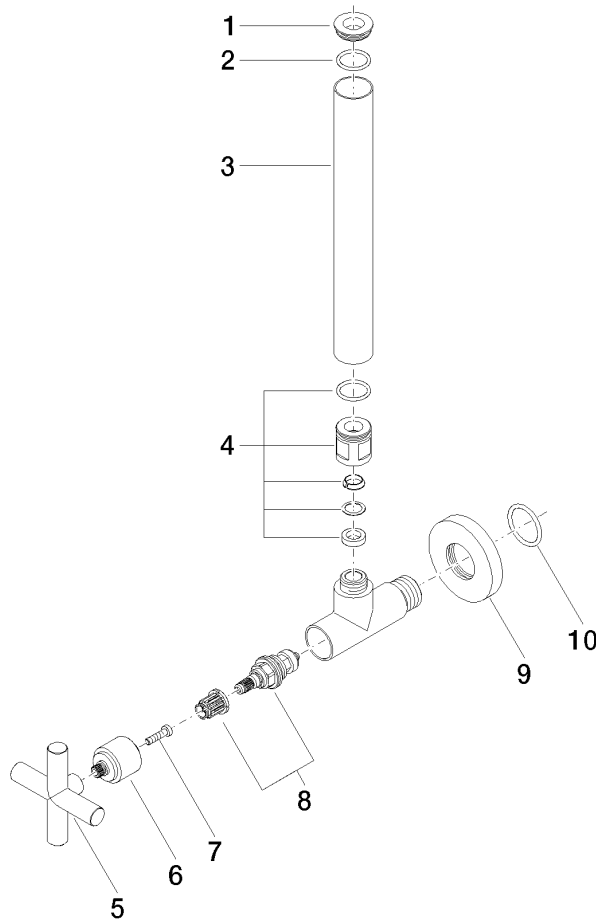


Flow rate chart



22 900 892 Product version up to 5/27/2021

Parts for other finishes can be found here: Chrome



Spare parts list

No.	Item Number	Name	Quantity used	Delivery time
	9 09 27 22 015-08	Rosette Ø 55 x Ø 24,6 x 9 mm - Platinum	1.00	54
	10 09 14 10 093 90	O-Ring NBR 70 23,5 x 2,5 mm -	1.00	14
	4 04 24 04 220 01-08	Compression fitting Ø 22 x 22 mm - Platinum	1.00	-
Spare part can no longer be ordered, please order the replacement item				
	8 90 90 03 006 00 90	Head part Grease chamber 3/8" -	1.00	14
	7 09 30 30 069 90	Mounting Cylinder head screw with hexagon socket Low profile M4 x 16 mm -	1.00	14
	1 09 21 22 000-08	Cover Ø 24 x 6 mm - Platinum	1.00	-
Spare part can no longer be ordered, please order the replacement item				
	6 09 12 12 041-08	Fixing cap mount Ø 24 x 30,2 mm - Platinum	1.00	54
	5 09 20 89 010-08	Handle 70 x 70 x 22,5 mm - Platinum	1.00	-
Spare part can no longer be ordered, please order the replacement item				
	90208901010-08	Handle TARA - Platinum		
	2 90 14 10 010 00 90	O-Ring EPDM 70 17,0 x 2,0 mm -	1.00	14
	3 09 28 22 020-08	Pipe Ø 24 x 200 mm - Platinum	1.00	-
Spare part can no longer be ordered, please order the replacement item				