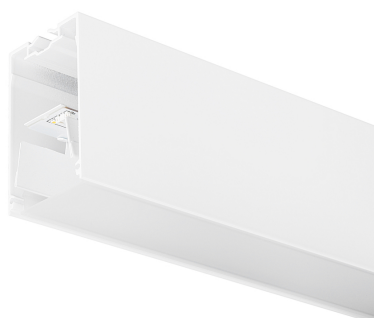


# Concord

## MC2 2.4M 3K DALI WHT OPAL 2071480



### Features

- MC2 2.4M 3K DALI WHT OPAL LED luminaire, white RAL9016 finishing, direct distribution, trimless detail for a seamless finish, suitable for recessed, semi-recessed, surface-mounted or suspended installation either horizontally or vertically, various accessories available, compact and minimalist design based on the Golden Mean, ideal for offices, meeting rooms, corridors, education facilities, museums and libraries, extruded aluminium body, diffuser: opal, colour temperature: 3000K warm white, total system power: 36W, total fixture output: 4600lm, luminaire efficacy: 128lm/W, LOR: 100%, colour rendering: Ra >80, LED Chromacity: 3 step MacAdam ellipse, lifespan: 66,000 hours L90B10, IR/UV free light source without heat radiation, operating voltage: 220-240V / 50-60Hz, drive current: 800mA, electronic driver, DALI dimmable, electrical protection: CLASS I, IP20, suitable for internal environment only.

### Product Overview

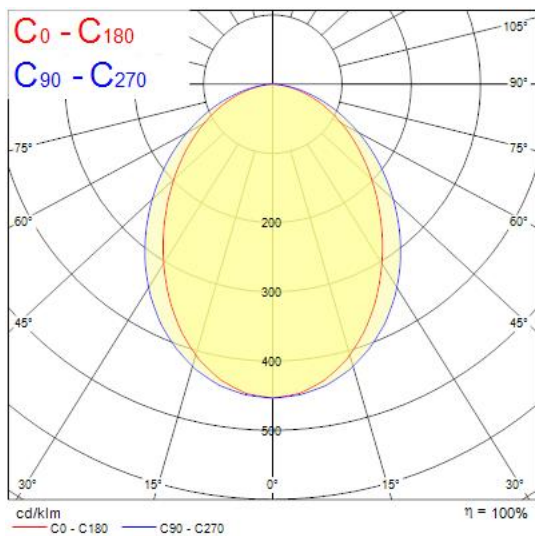
<b>Product name</b>	MC2 2.4M 3K DALI WHT OPAL
<b>Technology</b>	LED (3 SDCM)
<b>Cap/Base</b>	N/A
<b>Housing</b>	Aluminium
<b>Mount</b>	Ceiling recessed mounting
<b>General application</b>	Education, Hospitality, Office, Retail
<b>ETIM Class</b>	EC002892
<b>E-number FI</b>	4170341
<b>Fixture luminous flux (lm)</b>	4600
<b>Luminaire efficacy (lm/W)</b>	128
<b>LOR (%)</b>	100
<b>Correlated colour temperature (k)</b>	3000

# Concord

## MC2 2.4M 3K DALI WHT OPAL 2071480

Light colour	Warm White
CRI (Ra)	80
Colour Variation Initial (SDCM)	3
Glare control	< 24
Photobiological Risk Group	RG0
Total power consumption (W)	36
Electrical protection	Class I
Control gear type	Electronic ballast
Dimmable	Yes
Minimum dimming level (%)	1
Housing colour	White
IP rating	IP20
IK rating	IK03
Product EAN number	5025768714803
Warranty	5 years
Dimming method	DALI

### Photometry



### Technical drawings

