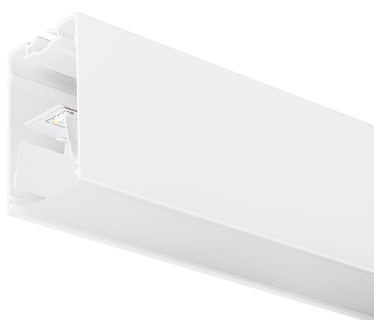


Concord

MC2 2.4M 4K DALI WHT OPAL 2071483



Features

- MC2 2.4M 4K DALI WHT OPAL LED luminaire, white RAL9016 finishing, direct distribution, trimless detail for a seamless finish, suitable for recessed, semi-recessed, surface-mounted or suspended installation either horizontally or vertically, various accessories available, compact and minimalist design based on the Golden Mean, ideal for offices, meeting rooms, corridors, education facilities, museums and libraries, extruded aluminium body, diffuser: opal, colour temperature: 4000K neutral white, total system power: 36W, total fixture output: 4800lm, luminaire efficacy: 133lm/W, LOR: 100%, colour rendering: Ra >80, LED Chromacity: 3 step MacAdam ellipse, lifespan: 66,000 hours L90B10, IR/UV free light source without heat radiation, operating voltage: 220-240V / 50-60Hz, drive current: 800mA, electronic driver, DALI dimmable, electrical protection: CLASS I, IP20, suitable for internal environment only.

Product Overview

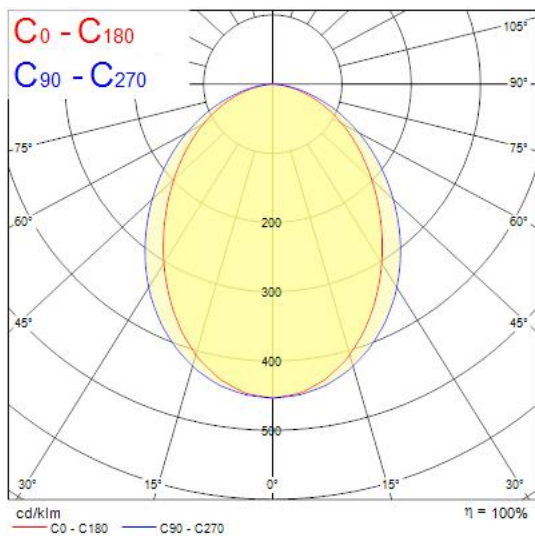
| | |
|--|--|
| Product name | MC2 2.4M 4K DALI WHT OPAL |
| Technology | LED (3 SDCM) |
| Cap/Base | N/A |
| Housing | Aluminium |
| Mount | Ceiling recessed mounting |
| General application | Education, Hospitality, Office, Retail |
| ETIM Class | EC002892 |
| E-number FI | 4170347 |
| Fixture luminous flux (lm) | 4800 |
| Luminaire efficacy (lm/W) | 133 |
| LOR (%) | 100 |
| Correlated colour temperature (k) | 4000 |

Concord

MC2 2.4M 4K DALI WHT OPAL 2071483

| | |
|---------------------------------|--------------------|
| Light colour | Neutral White |
| CRI (Ra) | 80 |
| Colour Variation Initial (SDCM) | 3 |
| Glare control | < 24 |
| Photobiological Risk Group | RG0 |
| Total power consumption (W) | 36 |
| Electrical protection | Class I |
| Control gear type | Electronic ballast |
| Dimmable | Yes |
| Minimum dimming level (%) | 1 |
| Housing colour | White |
| IP rating | IP20 |
| IK rating | IK03 |
| Product EAN number | 5025768714834 |
| Warranty | 5 years |
| Dimming method | DALI |

Photometry



Technical drawings

